



**RDMOTO**

2018

# OUR PRODUCT RANGE



## CRASH PROTECTORS

With several types of different crash pads in our offer, we have something for everyone. Big, small, asymmetrical or round and in many colors to choose from!



## LEVERS

The brake and clutch levers are available in 7 colors + you can modify color of the adjusting wheel to best customize your bike. Now in both Short and Standard lengths.



## CRASH FRAMES

RDmoto crash frames are made from the highest-quality steel and engineered for extreme conditions. They bring the most effective protection to your bike.



## TUNING ACCESSORIES

RDmoto company offers wide range of accessories for motorcycles starting with handlebar ends, mirror extensions or handlebar risers to oil and brake fluid covers. Just choose!



## ENGINE COVERS

Made from glass fibers to withstand extreme temperatures, our engine covers can be bought as a set or separate items.



## TRAVEL BAGS

Our travel bags are made from water-proof, highly durable Cordura material in combination with reflective tape. Even at high-speeds our products do not affect the riding attributes of your bike.





# ABOUT OUR COMPANY



## ESTABLISHMENT

RDMOTO company was founded in 2001 with the intention to build and offer the widest range of tuning and protective accessories for motorcycles.



## COMPANY GROWTH

3 years after the establishment of the company we were able to offer crash protectors for more than 100 models of motorcycles and we started to produce crash frames for touring motorcycles. We also expanded our range of products with mounting racks.



## SHOWROOM AND WAREHOUSE

Over the years we have added a clutch and brake levers, handlebar ends, stand support for swingarm, adapters to increase the handlebars, oil caps and other tuning accessories. We have extended the offer of crash protectors on more than 250 models of motorcycles. In 2010 we moved to larger space with an area of 400 m<sup>2</sup> which allowed us to create sample showroom and warehouse.



## WORLDWIDE EXPORT

Together with founded company we also established online store [www.rdmoto.eu](http://www.rdmoto.eu) and thanks to continuous improvement of e-shop we achieve global sales. In development of new products we devote a lot of time testing.





**| 2018 CATALOGUE**

<u>LEVERS</u>		<u>6-13</u>
6	Standard	
10	Short	
<u>CRASH PROTECTORS</u>		<u>14-49</u>
14	PH01	
18	PHV1	
24	PHV2	
30	SL01	
36	SLD	
40	PVN and PKN	
42	PV1 and PK1	
44	PV2 and PK2	
46	PPH	
48	PM1/PM2/PM3/PM4	
<u>ENGINE COVERS</u>		<u>50-51</u>
<u>CRASH FRAMES</u>		<u>52-59</u>
<u>TRAVEL BAGS</u>		<u>60-61</u>
<u>ACCESSORIES</u>		<u>62-85</u>
62	Mounting stands	
68	Handlebar risers	
70	Mirror extended adapters	
72	Handlebar ends	
76	Swingarm stand support	
78	Oil plugs	
80	Fork preload adjusters	
82	Nut for front fork	
83	Brake fluid cover	
84	Foot pegs	
<u>APPLICATION TABLES</u>		<u>86-109</u>
86	Brake and clutch levers	
94	Crash protectors and sliders	
106	Engine covers	
107	Crash frames	

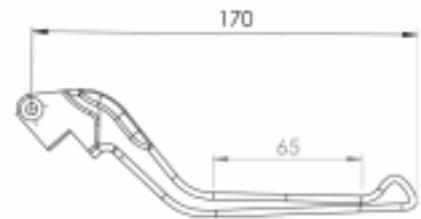


# | LEVERS



# STANDARD VERSION

## COLOR VARIANTS OF LEVER



## COLOR VARIANTS OF ADJUSTER



ALUMINIUM T7075

APPLICATION TABLE PAGE 86

MADE IN CZECHIA

350 MOTORCYCLES

EN

Fully adjustable brake and clutch levers.  
Material aluminum T7075.  
Original design. Made on CNC machines.  
Anodized surface, special varnish protection against UV and conventional use.  
6 positions for adjusting the distance between lever and handlebar. Adjusting adapter fitted with a stainless steel jamb for increased durability.  
7 color variants for levers and 5 color variants for adjustment adapters. Possibility of any combination.

DE

Voll stellbarer Brems- und Kupplungshebel.  
Aus ALU T7075  
Original Design. Auf CNC Anlagen bearbeitet.  
Oberflächenausführung Elox, UV-Schutz durch Sonderlack und gewöhnliche Anwendung.  
6 Einstellpositionen für den Hebel zur Lenkstange. Stellbares Passstück mit Edelstahl Hülse für längere Gebrauchsdauer.  
7 Farbvarianten der Hebel und 5 Farbvarianten der Passstücke. Kombinierbar.

ESP

Palanca de freno y de embrague totalmente ajustable.  
Fabricada de aluminio T7075  
Diseño original. Trabajado en máquinas CNC.  
Superficie anodizada, protección UV y contra el uso diario por un barniz especial.  
6 posiciones para ajustar la distancia entre la palanca y el manillar. Adaptador de ajuste con un marco de acero inoxidable para mayor durabilidad.  
7 variantes de colores de las palancas y 5 variantes de colores de los adaptadores de ajuste. Combinaciones de colores arbitrarias.

IT

La leva del freno e di frizione, completamente regolabile.  
Fatta da alluminio T7075  
Design originale. Lavorato sulle macchine CNC.  
Finitura anodizzata, protezione con verniciatura speciale dai raggi UV ed uso ordinario.  
Sei posizioni per regolare la distanza della leva dal manubrio. L'adattatore di regolazione è attrezzato con lo stipite inox per aumentare la durata utile.  
Sette colori di leve e cinque colori degli adattatori di regolazione. È disponibile qualsiasi combinazione.

FR

Leviers de frein et d'embrayage pleinement réglables.  
Ils ont fabriqués en aluminium T7075.  
Conception originale. Ils sont fabriqués aux machines CNC.  
Finition anodisée, protection contre les rayons UV et l'usage courant au moyen d'une peinture spéciale.  
6 positions pour régler la distance entre levier et le guidon. L'adaptateur de réglage est muni d'une insertion en acier inoxydable pour augmenter sa durée de vie.  
7 options de couleur des leviers et 5 options des adaptateurs de réglage. Il est possible d'en combiner arbitrairement.







SUZUKI GSXR 1000



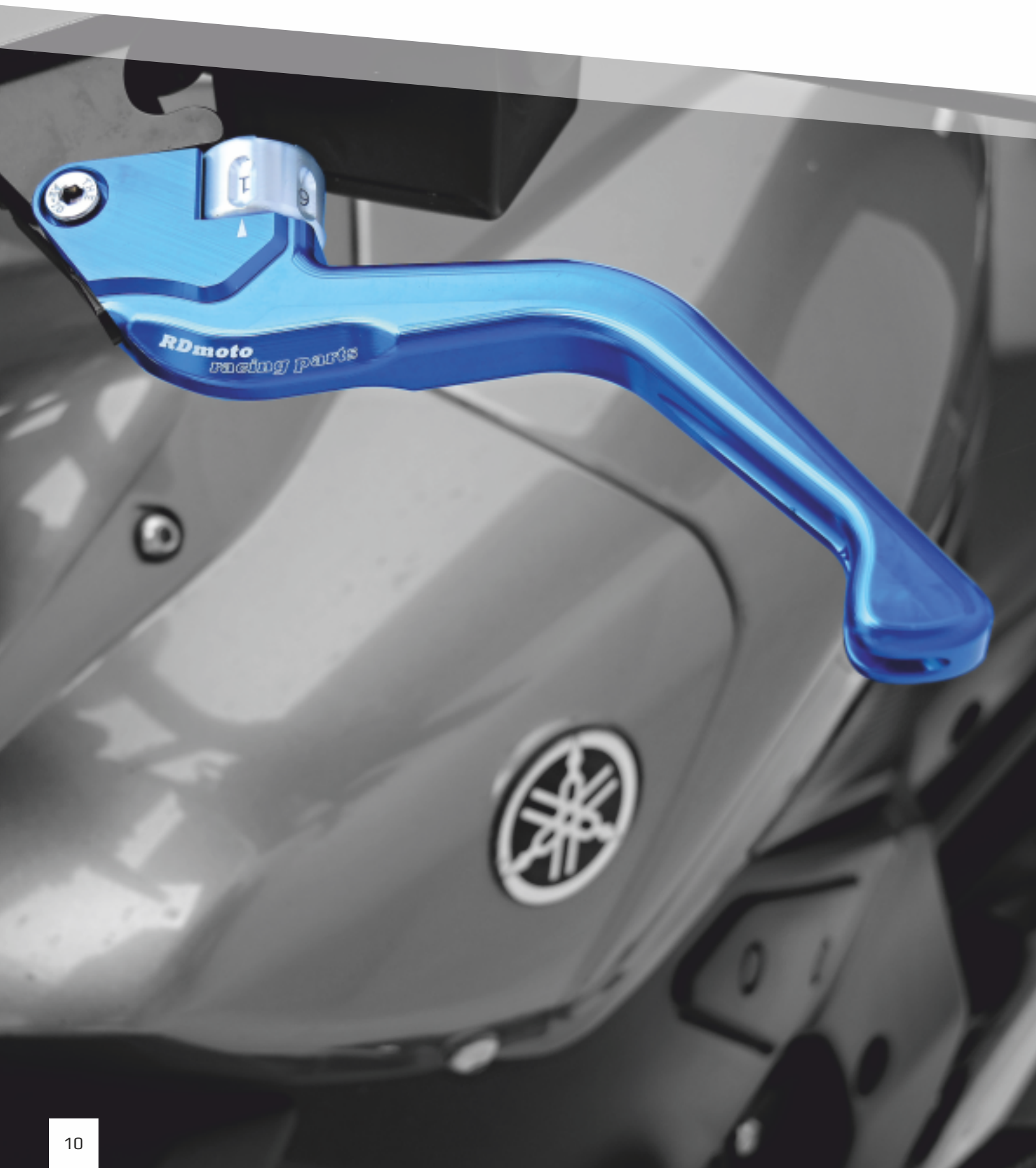
SUZUKI DR 800 BIG



SUZUKI GSX-R 750

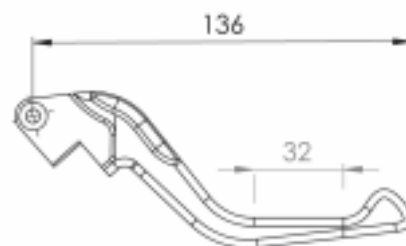


# | LEVERS



# SHORT VERSION

## COLOR VARIANTS OF LEVER



## COLOR VARIANTS OF ADJUSTER



ALUMINIUM T7075

APPLICATION TABLE PAGE 86

MADE IN CZECHIA

350 MOTORCYCLES

EN

Fully adjustable brake and clutch levers.  
Material aluminum T7075.  
Original design. Made on CNC machines.  
Anodized surface, special varnish protection against UV and conventional use.  
6 positions for adjusting the distance between lever and handlebar. Adjusting adapter fitted with a stainless steel jamb for increased durability.  
7 color variants for levers and 5 color variants for adjustment adapters. Possibility of any combination.

DE

Voll stellbarer Brems- und Kupplungshebel.  
Aus ALU T7075  
Original Design. Auf CNC Anlagen bearbeitet.  
Oberflächenausführung Elox, UV-Schutz durch Sonderlack und gewöhnliche Anwendung.  
6 Einstellpositionen für den Hebel zur Lenkstange. Stellbares Passstück mit Edelstahl Hülse für längere Gebrauchsdauer.  
7 Farbvarianten der Hebel und 5 Farbvarianten der Passstücke. Kombinierbar.

ESP

Palanca de freno y de embrague totalmente ajustable.  
Fabricada de aluminio T7075  
Diseño original. Trabajado en máquinas CNC.  
Superficie anodizada, protección UV y contra el uso diario por un barniz especial.  
6 posiciones para ajustar la distancia entre la palanca y el manillar. Adaptador de ajuste con un marco de acero inoxidable para mayor durabilidad.  
7 variantes de colores de las palancas y 5 variantes de colores de los adaptadores de ajuste. Combinaciones de colores arbitrarias.

IT

La leva del freno e di frizione, completamente regolabile.  
Fatta da alluminio T7075  
Design originale. Lavorato sulle macchine CNC.  
Finitura anodizzata, protezione con verniciatura speciale dai raggi UV ed uso ordinario.  
Sei posizioni per regolare la distanza della leva dal manubrio. L'adattatore di regolazione è attrezzato con lo stipite inox per aumentare la durata utile.  
Sette colori di leve e cinque colori degli adattatori di regolazione. È disponibile qualsiasi combinazione.

FR

Leviers de frein et d'embrayage pleinement réglables.  
Ils ont fabriqués en aluminium T7075.  
Conception originale. Ils sont fabriqués aux machines CNC.  
Finition anodisée, protection contre les rayons UV et l'usage courant au moyen d'une peinture spéciale.  
6 positions pour régler la distance entre levier et le guidon. L'adaptateur de réglage est muni d'une insertion en acier inoxydable pour augmenter sa durée de vie.  
7 options de couleur des leviers et 5 options des adaptateurs de réglage. Il est possible d'en combiner arbitrairement.



BMW S1000R





SUZUKI GSX-R1000



Yamaha FZ1



Ducati Monster 1200S

# | CRASH PROTECTORS



# TYPE PH01

COLOR  
VARIANTS  
OF CRASH  
PROTECTOR



POM-C MATERIAL

APPLICATION TABLE PAGE 94

MADE IN CZECHIA

320 MOTORCYCLES

EN

The classic crash protector in the shape of a mushroom.  
Material POM-C. White and black design.  
Low adhesion strength, good sliding properties, high strength.  
Due to increase in strength, the inner part of the protector is fitted with a steel insert.  
Price includes complete mounting kit for the specific type of motorcycle.

DE

Klassischer Sturzpad.  
Material POM-C. Ausführung weiß und schwarz.  
Niedrige Haftkraft, gute Rutscheigenschaften, hohe Festigkeit.  
Um höhere Festigkeit zu erzielen, ist der innere Sturzpadbereich mit Stahleinsatz versteift.  
Preis incl. des Montagesatzes komplett für den entsprechenden Motorradtyp.

ESP

Tope protector clásico en forma de boletus (hongo).  
Material poliacetal POM-C. Diseño blanco y negro.  
Fuerza de adhesión baja, buenas propiedades de deslizamiento, alta resistencia.  
Para aumentar la resistencia la parte interior del tope viene equipada con un inserto de acero.  
El precio incluye el kit de montaje completo para el tipo de motocicleta correspondiente.

IT

Tampone paratelaio classico in forma di fungo.  
Materiale POM-C. Colori bianco e nero.  
Forze adesive basse, buone caratteristiche di scorrimento, alta resistenza.  
Per aumentare la resistenza, la parte interiore del tampone paratelaio è attrezzata di un inserto d'acciaio.  
Il prezzo include il kit di montaggio completo per il tipo particolare di motocicletta.

FR

Tampon pare-carter classique en forme de champignon.  
Matériel POM-C. Versions en couleurs blanche et noire.  
Faibles forces d'adhésion, bonnes propriétés de glissement, haute résistance.  
Pour augmenter la résistance, la partie intérieure est munie d'une insertion en acier.  
Notre prix est inclus le kit de montage complet correspondant au type de la moto.



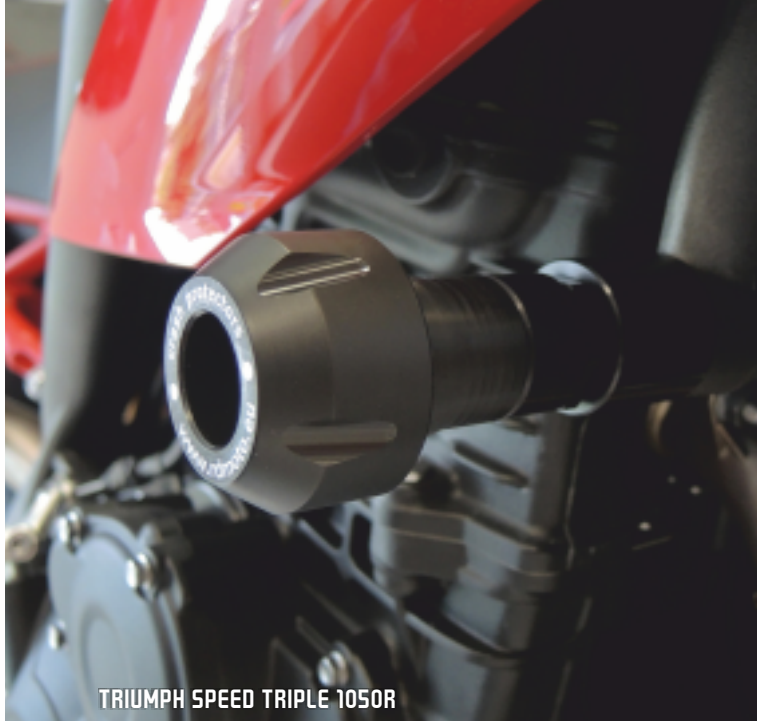


HONDA CB500F



YAMAHA MT-10





TRIUMPH SPEED TRIPLE 1050R



YAMAHA MT-07



SUZUKI GSX-R 1000



SUZUKI GSX-S 1000/F



BMW S1000 XR

# | CRASH PROTECTORS



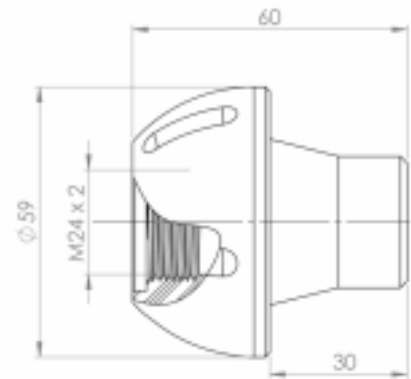


# TYPE PHV1

COLOR  
VARIANTS  
OF CRASH  
PROTECTOR



COLOR  
VARIANTS  
OF COVER



POM-C MATERIAL

APPLICATION TABLE PAGE 94

MADE IN CZECHIA

320 MOTORCYCLES

EN

The classic crash protector with semicircular head.  
Material POM-C. White and black design.  
Low adhesion strength, good sliding properties, high strength.  
Due to increase in strength, the inner part of the protector is fitted with a steel insert.  
To the crash protectors can choose from 7 colors caps.  
Price includes complete mounting kit for the specific type of motorcycle.

DE

Klassischer Sturzpad mit Halbrundkopf.  
Material POM-C. Ausführung weiß und schwarz.  
Niedrige Haftkraft, gute Rutscheigenschaften, hohe Festigkeit.  
Um höhere Festigkeit zu erzielen, ist der innere Sturzpadbereich mit Stahleinsatz versteift.  
Zu den Sturz pads können Kappen aus 7 Farbausführungen gewählt werden.  
Preis incl. des Montagesets komplett für den entsprechenden Motorradtyp.

ESP

Tope protector clásico en forma de boletus (hongo)  
Material poliacetal POM-C. Diseño blanco y negro.  
Fuerza de adhesión baja, buenas propiedades de deslizamiento, alta resistencia.  
Para aumentar la resistencia la parte interior del tope viene equipada con un inserto de acero.  
El precio incluye el kit de montaje completo para el tipo de motocicleta correspondiente.

IT

Tampone paratelaio classico in forma di fungo.  
Materiale POM-C. Colori bianco e nero.  
Forze adesive basse, buone caratteristiche di scorrimento, alta resistenza.  
Per aumentare la resistenza, la parte interiore del tampone paratelaio è attrezzata di un inserto d'acciaio.  
Il prezzo include il kit di montaggio completo per il tipo particolare di motocicletta.

FR

Tampon pare-carter classique avec une tête demi-circulaire.  
Matériel POM-C. Versions en couleurs blanche et noire.  
Faibles forces d'adhésion, bonnes propriétés de glissement, haute résistance.  
Vous pouvez choisir parmi 7 teintes de couleurs de couvercles correspondant aux tampons pare-carter.  
Notre prix est inclus le kit de montage complet correspondant au type de la moto.



TRIUMPH SPEED TRIPLE 1050



BENELLI BN600

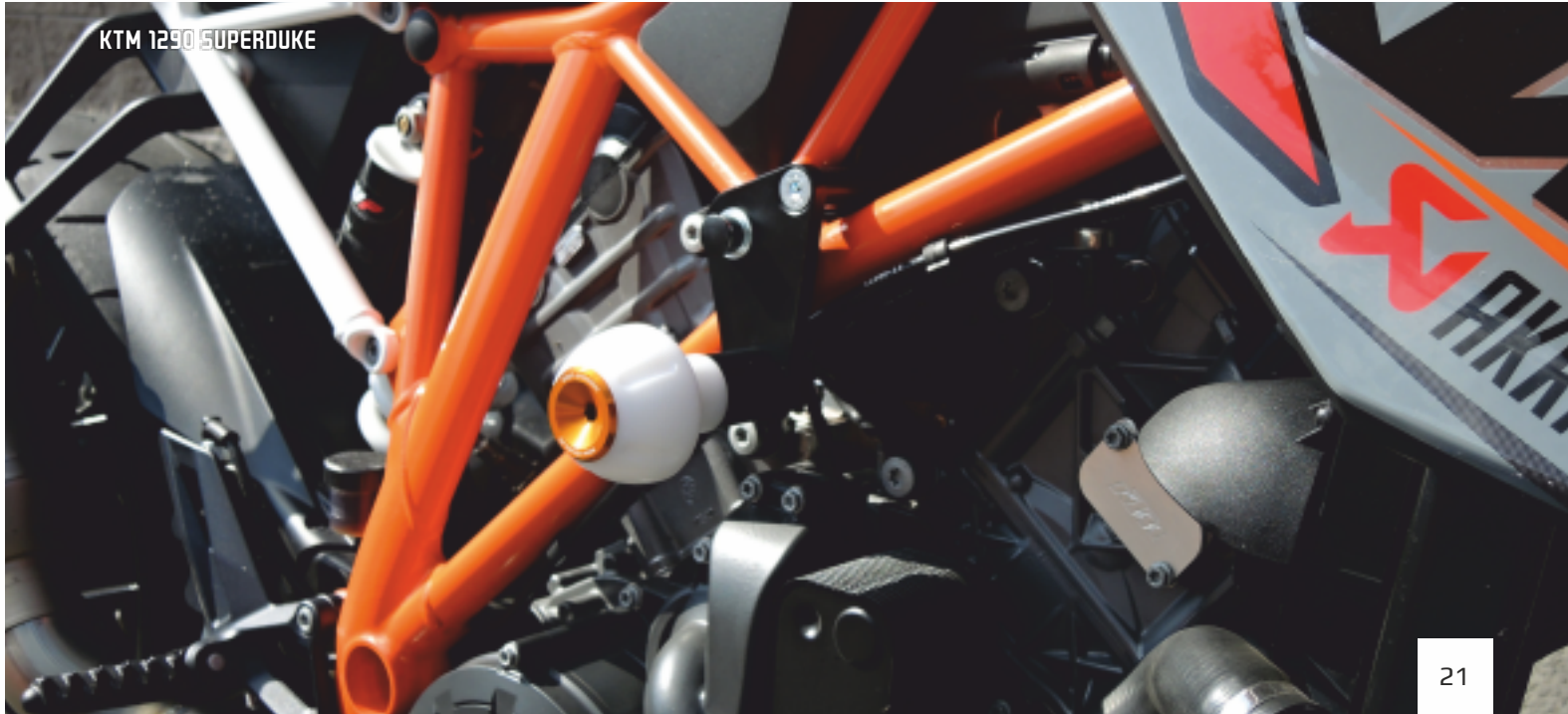




KAWASAKI Z650 NINJA



YAMAHA FZ1



KTM 1290 SUPERDUKE





SUZUKI GSX-R 1000



KTM RC 390





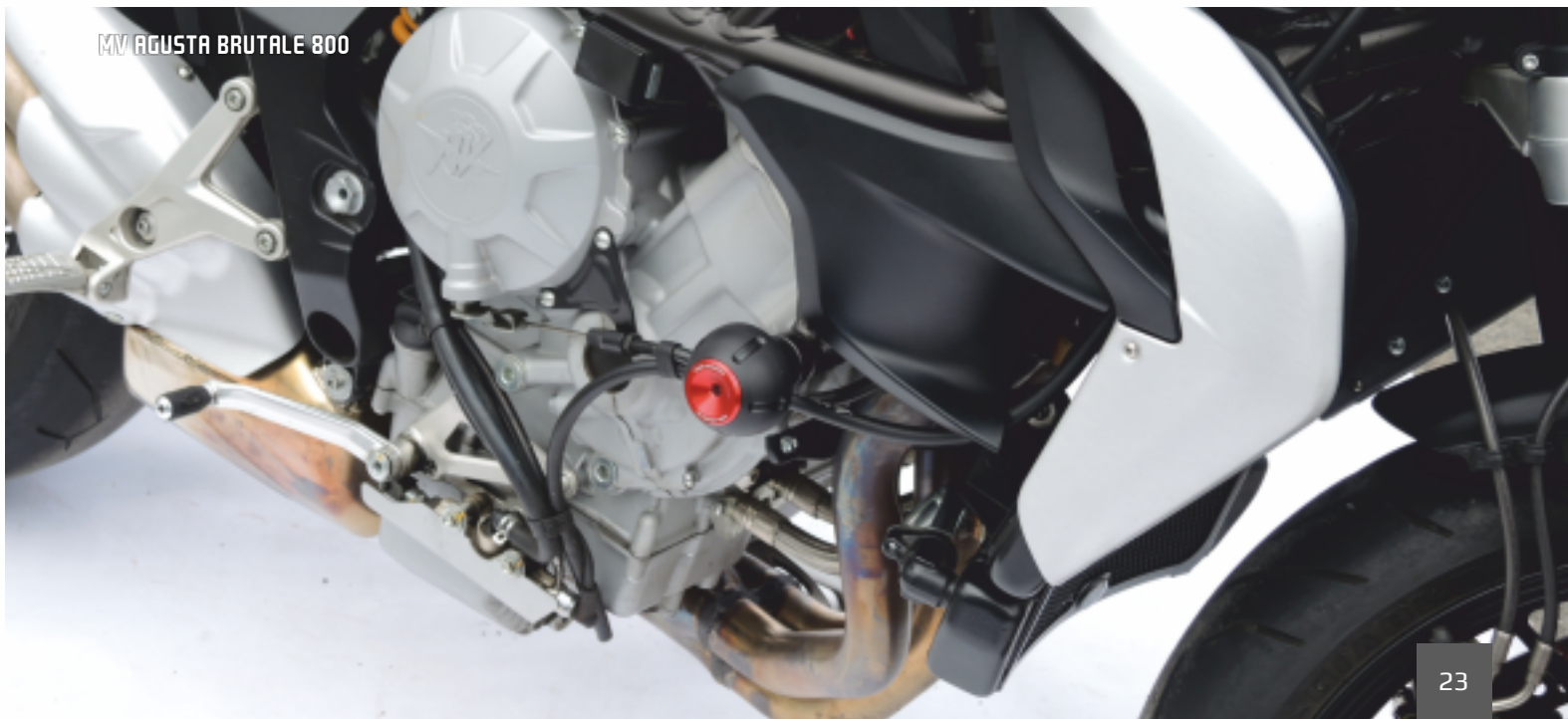
YAMAHA XSR900



KAWASAKI ER-6N



YAMAHA MT-10



MV AGUSTA BRUTALE 800



# | CRASH PROTECTORS

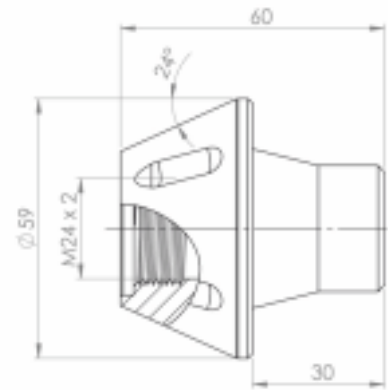


# TYPE PHV2

## COLOR VARIANTS OF CRASH PROTECTOR



## COLOR VARIANTS OF COVER



POM-C MATERIAL

APPLICATION TABLE PAGE 94

MADE IN CZECHIA

320 MOTORCYCLES

EN

The classic crash protector with conical head.  
Material POM-C. White and black design.  
Low adhesion strength, good sliding properties, high strength.  
Due to increase in strength, the inner part of the protector is fitted with a steel insert.  
To the crash protectors can choose from 7 colors caps.  
Price includes complete mounting kit for the specific type of motorcycle.

DE

Klassischer Sturzpad mit Kegelkopf.  
Material POM-C. Ausführung weiß und schwarz.  
Niedrige Haftkraft, gute Rutscheigenschaften, hohe Festigkeit.  
Um höhere Festigkeit zu erzielen, ist der innere Sturzpadbereich mit Stahleinsatz versteift.  
Zu den Sturz pads können Sie Kappen aus 7 Farbausführungen wählen.  
Preis incl. des Montagesatzes komplett für den entsprechenden Motorradtyp.

ESP

Tope protector clásico con la cabeza cónica.  
Material poliacetal POM-C. Diseño blanco y negro.  
Fuerza de adhesión baja, buenas propiedades de deslizamiento, alta resistencia.  
Para aumentar la resistencia es la parte interior del tope equipada de un inserto de acero.  
Podéis elegir de 7 colores de tapas para los protectores.  
El precio incluye el kit de montaje completo para el tipo de motocicleta correspondiente.

IT

Tampone paratelaio classico con la testa conica  
Materiale POM-C. Colori bianco e nero.  
Forze adesive basse, buone caratteristiche di scorrimento, alta resistenza.  
Per aumentare la resistenza, la parte interiore del tampone paratelaio è attrezzata di un inserto d'acciaio.  
Copertine di sette varie tonalità di colore disponibili per i tamponi paratelaio

FR

Tampon pare-carter classique avec une tête conique.  
Matériel POM-C. Version en couleurs blanche et noire.  
Faibles forces d'adhésion, bonnes propriétés de glissement, haute résistance.  
Pour augmenter la résistance, la partie intérieure est munie d'une insertion en acier.  
Vous pouvez choisir parmi 7 teintes de couleurs de couvercles correspondants aux tampons pare-carter.



KAWASAKI Z650



KAWASAKI Z750





HONDA CBR1000RR



TRIUMPH SPEED TRIPLE 1050R



SUZUKI GSX-S 750

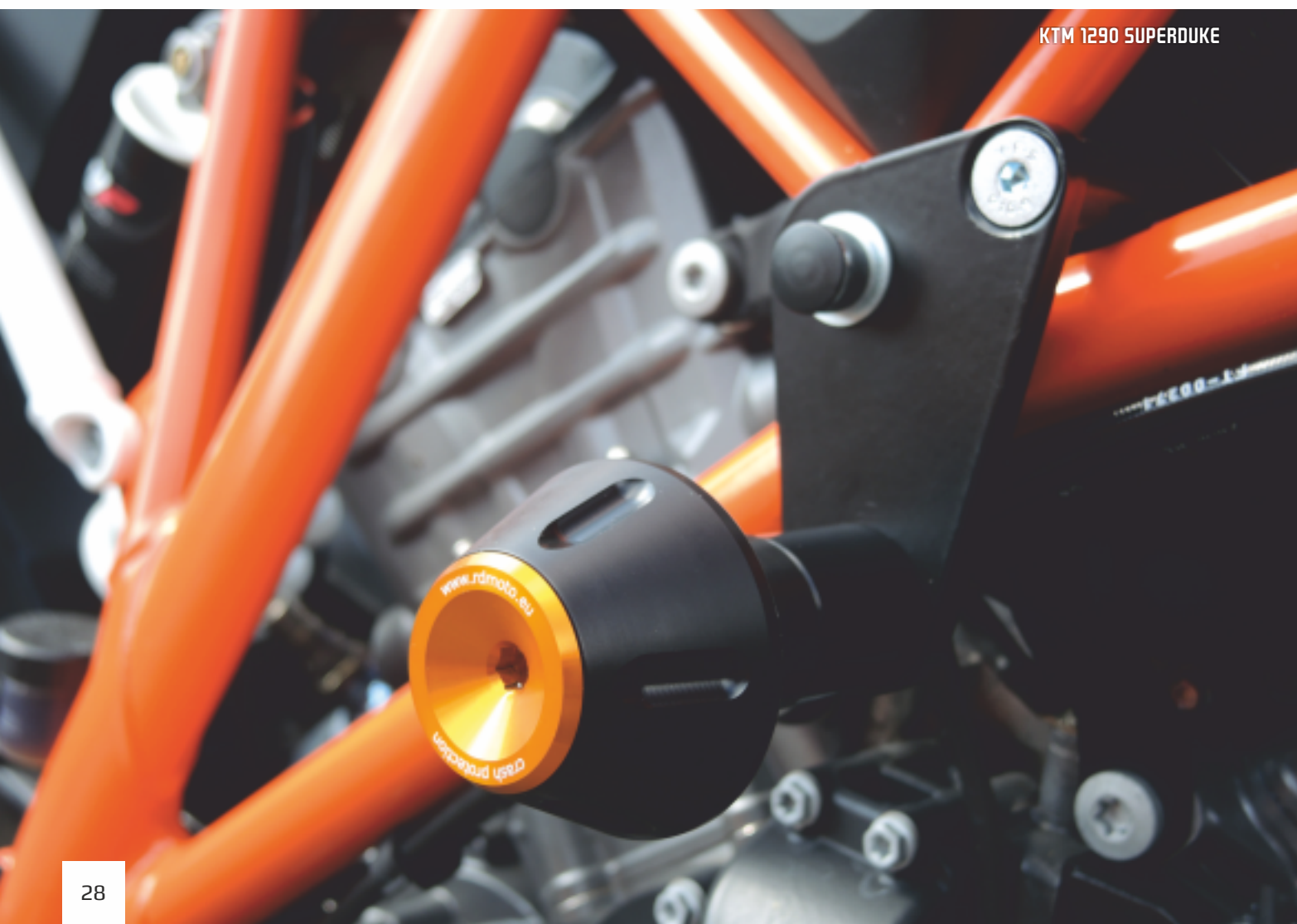


BMW S1000RR/HP4





BENELLI BN 251



KTM 1290 SUPERDUKE





YAMAHA MT-07



YAMAHA MT-10



YAMAHA XSR 900

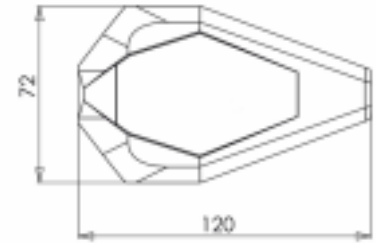
# | CRASH SLIDERS





# TYPE SL01

## COLOR VARIANTS OF CRASH SLIDER



## COLOR VARIANTS OF COVER



POM-C MATERIAL

APPLICATION TABLE PAGE 94

MADE IN CZECHIA

320 MOTORCYCLES

EN

Crash "slider" with a large sliding surface. White and black plastic design. In the crash reduced power transfer to the mounting kit and the frame of the bike. Plastic injection to the shape. High strength, hardness and sliding. To the crash sliders can choose from 7 colors caps. Price includes complete mounting kit for the specific type of motorcycle.

DE

Sturz „Slider“ mit größerer Rutschfläche. Kunststoff in Ausführung weiß und schwarz. Beim Sturz mindert er die Kraftübertragung auf den Montageset und den Motorradrahmen. Kunststoffteil Formgespritzt. Hoher Festigkeits-, Härte- und Rutschfähigkeit. Zu den Sturz „Slider“ gibt es 7 Farbvarianten der Kappen. Preis incl. des Montagesets komplett für den entsprechenden Motorradtyp.

ESP

Deslizador anticaída con una superficie de deslizamiento más grande. Durante la caída disminuye la transferencia de fuerza al kit de montaje y bastidor de la moto. Inyección de plástico. De alta resistencia, dureza y lubricidad. Podéis elegir entre 7 colores de tapas para los protectores. El precio incluye un kit de montaje completo para el tipo de motocicleta correspondiente.

IT

Tampone paratelaio „slider“ con l'area di scorrimento allargata. Colori della plastica bianco e nero. Durante la caduta si riduce la trasmissione della forza sul kit di montaggio e il telaio della motocicletta. Stampaggio ad iniezione plastica. Resistenza, durezza e scorrimento alte. Copertine di sette varie tonalità di colore disponibili per i tamponi paratelaio disponibili per i tamponi paratelaio „slider“. Il prezzo include il kit di montaggio completo per il tipo particolare di motocicletta.

FR

Patin de protection à une grande surface de glissement. Versions en plastique en couleurs blanche et noire. En cas de chute, il réduit la transmission de la force au kit de montage et au cadre de la moto. Plastique moulé par injection. Haute résistance, dureté et glissance. Vous pouvez choisir parmi 7 teintes de couleurs de couvercles correspondants aux patins de protection. Notre prix est inclus le kit de montage complet correspondant au type de la moto.



KAWASAKI ZX10-R



YAMAHA YZF R3





KAWASAKI ER-6F



KTM DUKE 125/200/390



HONDA CB 650F / CBR650F



YAMAHA YZF R1





APRILIA SL 750 SHIVER



YAMAHA XSR 700





YAMAHA MT-10



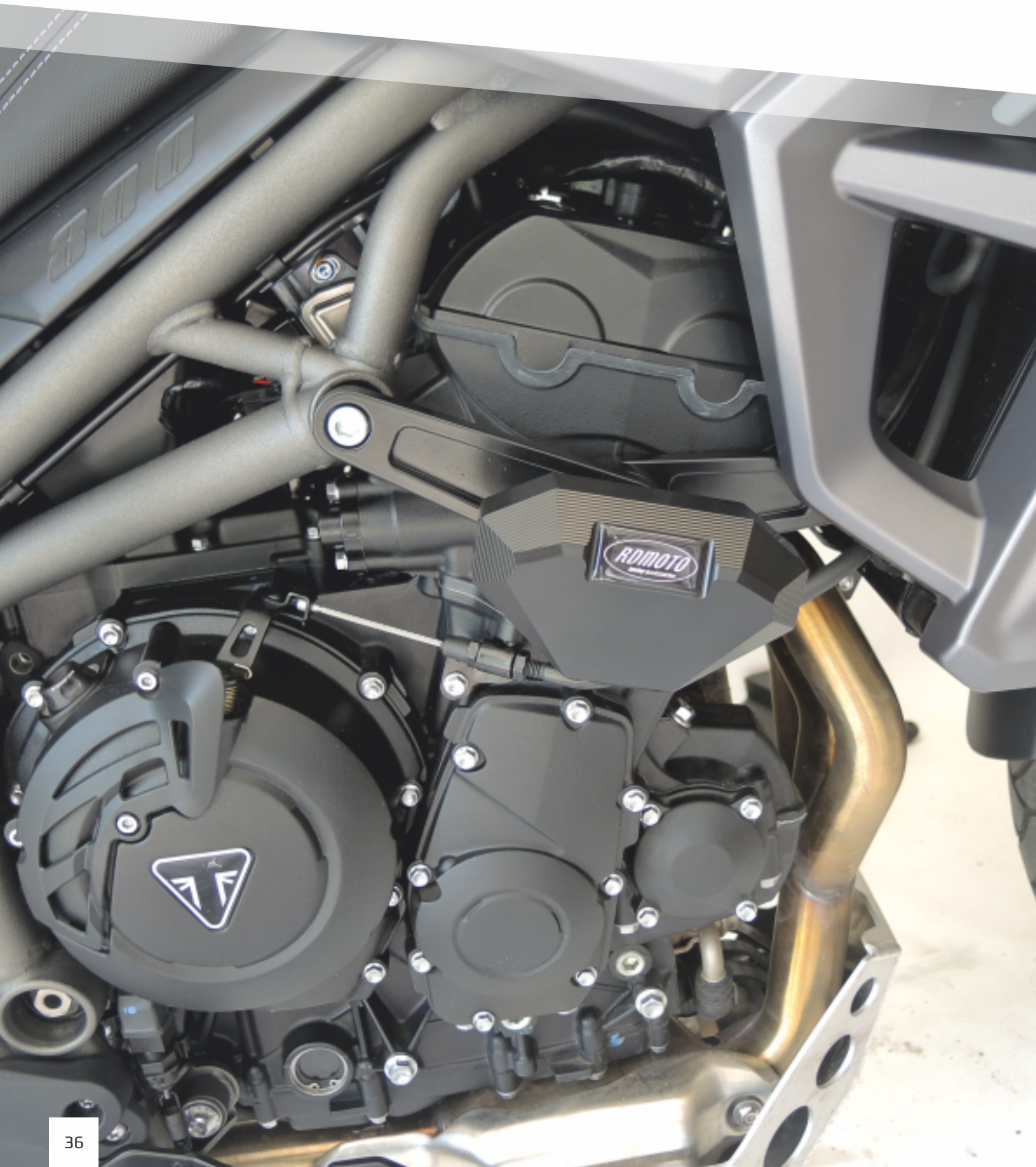
YAMAHA XSR 900



YAMAHA MT-07



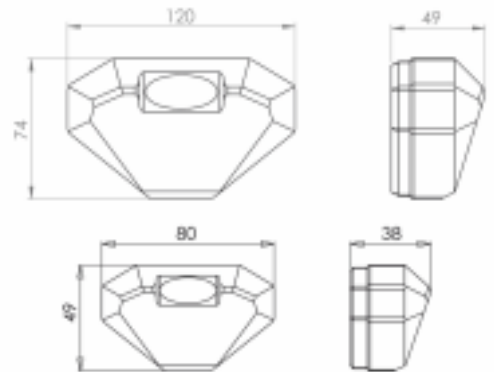
# | CRASH SLIDERS





# TYPE SLD/SLDM

## SIZE VARIANTS OF CRASH SLIDER



POM-C MATERIAL

APPLICATION TABLE PAGE X

MADE IN CZECHIA

320 MOTORCYCLES

EN

Crash "slider" with a large sliding surface.  
In the crash reduced power transfer to the mounting kit and the frame of the bike.  
Material POM-C. Produced on 5-axis CNC machines.  
Low adhesion strength, good sliding properties, high strength.  
Price includes complete mounting kit for the specific type of motorcycle.

DE

Sturz „Slider“ mit größerer Rutschfläche.  
Beim Sturz mindert er die Kraftübertragung auf den Montageset und den Motorradrahmen.  
Material POM-C. Produziert auf einer 5-Achsen CNC Anlage.  
Niedrige Haftkraft, gute Laufeigenschaften, hohe Festigkeit.  
Preis incl. des Montagesets komplett für den entsprechenden Motorradtyp.

ESP

Deslizador anticaída con la superficie de deslizamiento más grande.  
Durante la caída disminuye la transferencia de fuerza al kit de montaje y bastidor de la moto.  
Material poliacetal POM-C. Fabricado en máquina CNC de 5 ejes.  
Fuerza de adhesión baja, buenas propiedades de deslizamiento, alta resistencia.  
El precio incluye un kit de montaje completo para el tipo de motocicleta correspondiente.

IT

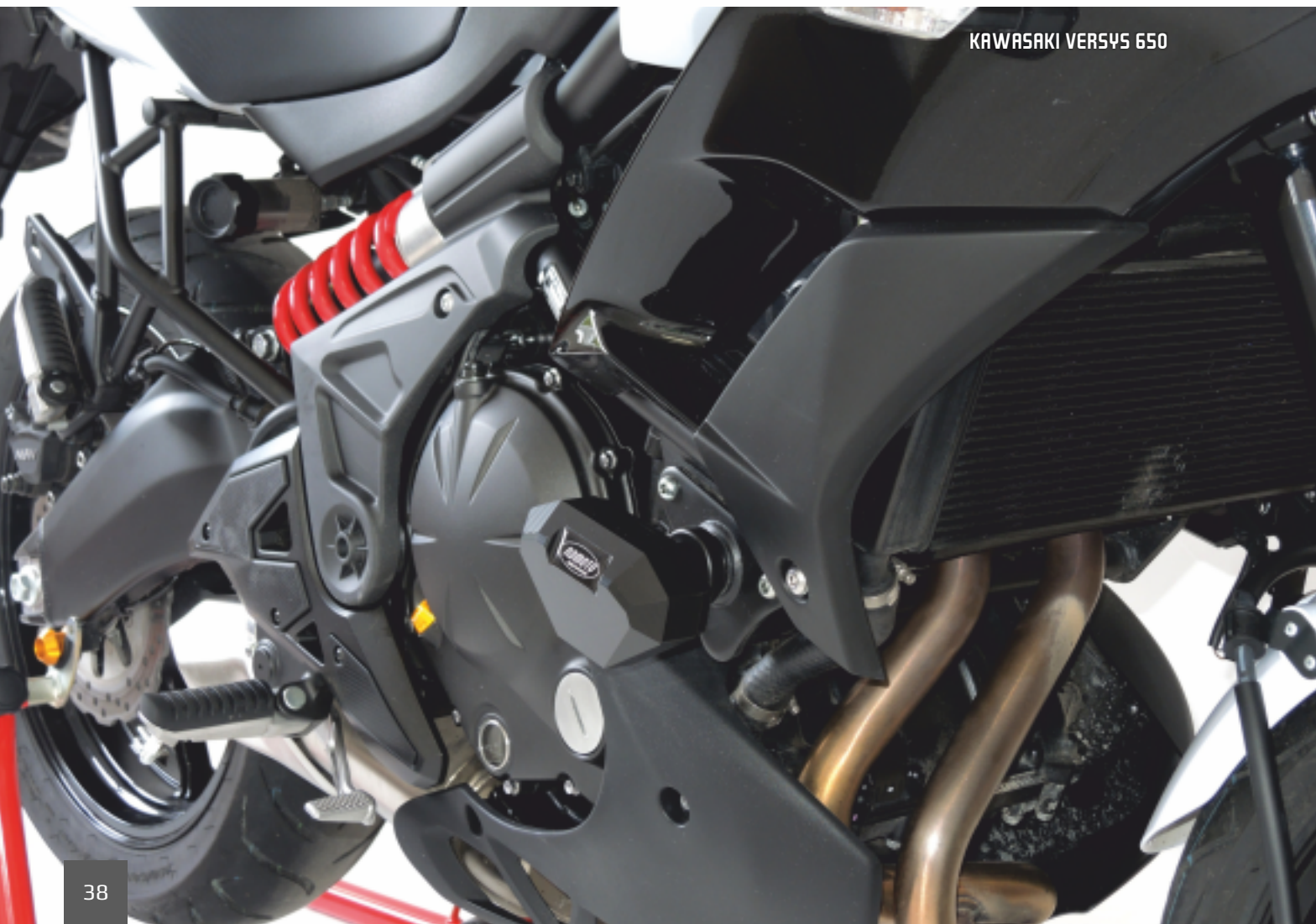
Tampone paratelaio „slider“ con l'area di scorrimento allargata.  
Durante la caduta si riduce la trasmissione della forza sul kit di montaggio e il telaio della motocicletta.  
Materiale POM-C. Prodotto sulla macchina CNC a 5 assi.  
Forze adesive basse, buone caratteristiche di scorrimento, alta resistenza.  
Il prezzo include il kit di montaggio completo per il tipo particolare di motocicletta.

FR

Patin de protection à une grande surface de glissement.  
En cas de chute, il réduit la transmission de la force au kit de montage et au cadre de la moto.  
Matériel POM-C. Il est fabriqué par une machine CNC à 5 axes.  
Faibles forces d'adhésion, bonnes propriétés de glissement, haute résistance.  
Notre prix est inclus le kit de montage complet correspondant au type de la moto.



APRILIA TUONO



KAWASAKI VERSYS 650





DUCATI SCRAMBLER 800



BMW S1000XR



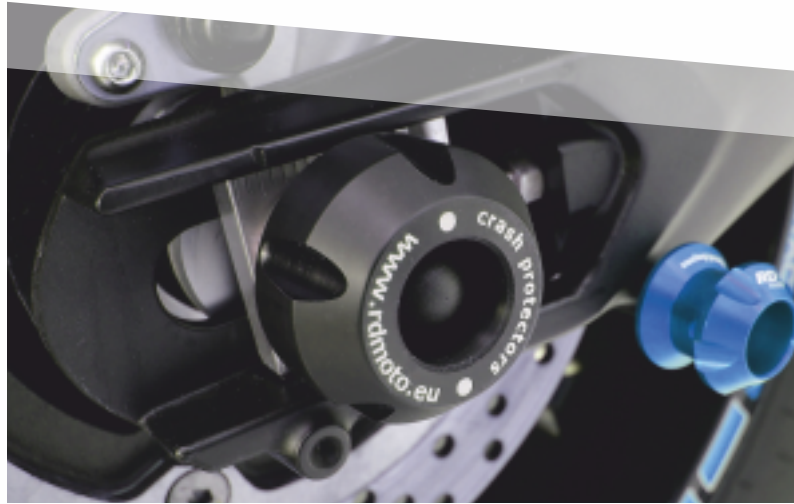
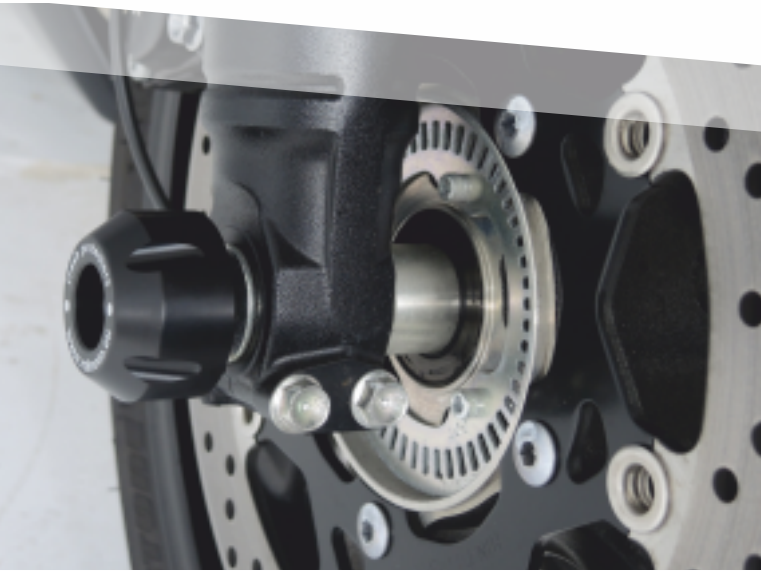
YAMAHA XSR 900



KAWASAKI Z300



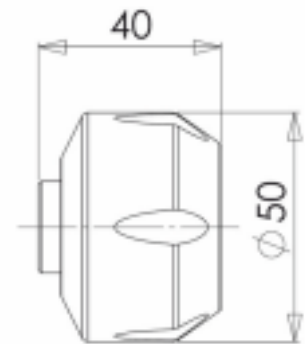
# | SPINDLE PROTECTORS





# TYPE PVN/PKN

## PRODUCT IN DETAIL



POM-C MATERIAL

APPLICATION TABLE PAGE X

MADE IN CZECHIA

180 MOTORCYCLES

EN

Classic crash protector into the front and rear wheel axle.  
The same shape as the protector PH01.  
Protection of the front forks and rear swingarm.  
Material POM-C. Black design.  
Price is always for a complete mounting set for the motorcycle.

DE

Klassischer Sturzpad für die Radachse vorn und hinten bestimmt.  
Formidentisch wie der Sturzpad PH01.  
Gabelschutz vorn und der Schwinge Sturzpad hinten.  
Material POM-C. Schwarz.  
Preis immer incl. des Montagesets komplett für den entsprechenden Motorradtyp.

ESP

Tope protector clásico destinado a los ejes de la rueda delantera y trasera.  
La misma forma como el tope PH01.  
Protección de brazos delanteros y de brazo basculante trasero.  
Material poliacetal POM-C. Diseño negro.  
El precio siempre incluye kit de montaje completo para el tipo de motocicleta correspondiente.

IT

Tampone paratelaio classico inteso per l'asse anteriore e posteriore della ruota.  
Forma identica come il tampone paratelaio PH01.  
Protezione delle forcelle anteriori e della forcella posteriore girevole.  
Materiale POM-C. Colore nero.  
Il prezzo si riferisce sempre al montaggio kit completo per la motocicletta particolare.

FR

Tampon de protection classique destiné aux axes avant et arrière de la roue.  
La même forme que le pare-carter PH01.  
Protection de la fourche avant et du bras oscillant.  
Matériel POM-C. Couleur noire.  
Notre prix vaut toujours pour un kit de montage complet correspondant au type de la moto.

# | SPINDLE PROTECTORS



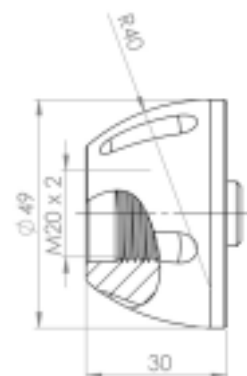


# TYPE PV1/PK1

## PRODUCT IN DETAIL



## COLOR VARIANTS OF COVER



POM-C MATERIAL

APPLICATION TABLE PAGE 94

MADE IN CZECHIA

180 MOTORCYCLES

EN

Classic crash protector into the front and rear wheel axle.  
The same shape as the protector PHV1.  
Protection of the front forks and rear swingarm.  
Material POM-C. Black design.  
Aluminium caps available in 7 colors (anodized).  
Price is always for a complete mounting set for the motorcycle.

DE

Klassischer Sturzpad für die Radachse vorn und hinten bestimmt.  
Formidentisch wie der Sturzpad PHV1.  
Radgabelschutz vorn und der Kippradgabelschutz hinten.  
Material POM-C. Ausführung schwarz.  
ALU Kappen in 7 Farbausführungen (Elox).  
Preis immer incl. des Montagesatzes komplett für den entsprechenden Motorradtyp.

ESP

Tope protector clásico destinado para los ejes de la rueda delantera y trasera.  
La misma forma como el tope PHV1.  
Protección de brazos delanteros y de brazo basculante trasero.  
Material poliacetal POM-C. Diseño negro.  
Tapas de aluminio disponibles en 7 colores (anodinado).  
El precio siempre incluye el kit de montaje completo para el tipo de motocicleta correspondiente.

IT

Tampone paratelaio classico inteso per l'asse anteriore e posteriore della ruota.  
Forma identica come il tampone paratelaio PHV1.  
Protezione delle forcelle anteriori e della forcella posteriore girevole.  
Materiale POM-C. Colore nero.  
Copertine di alluminio disponibili in sette tonalità di colore (anodizzato).  
Il prezzo si riferisce sempre al montaggio kit completo per la motocicletta particolare.

FR

Tampon de protection classique destiné aux axes avant et arrière de la roue.  
La même forme que le pare-carter PHV1.  
Protection de la fourche avant et du bras oscillant.  
Matériel POM-C. Couleur noire.  
Les couvercles en aluminium sont accessibles en 7 teintes de couleur (anodisation).  
Notre prix vaut toujours pour un kit de montage complet correspondant au type de la moto.

# | SPINDLE PROTECTORS



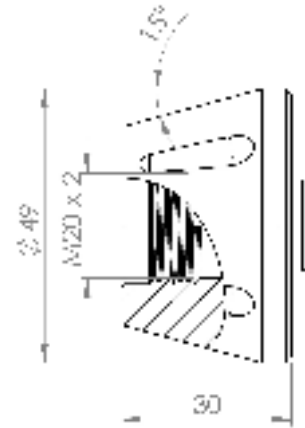


# TYPE PV2/PK2

## PRODUCT IN DETAIL



## COLOR VARIANTS OF COVER



POM-C MATERIAL

APPLICATION TABLE PAGE 94

MADE IN CZECHIA

180 MOTORCYCLES

EN

Classic crash protector into the front and rear wheel axle.  
The same shape as the protector PHV2.  
Protection of the front forks and rear swingarm.  
Material POM-C. Black design.  
Aluminium caps available in 7 colors (anodized).  
Price is always for a complete mounting set for the motorcycle.

DE

Klassischer Sturzpad für die Radachse vorn und hinten bestimmt.  
Formidentisch wie der Sturzpad PHV2.  
Radgabelschutz vorn und der Kippradgabelschutz hinten.  
Material POM-C. Ausführung schwarz.  
ALU Kappen in 7 Farbausführungen (Elox).  
Preis immer incl. des Montagesets komplett für den entsprechenden Motorradtyp.

ESP

Tope protector clásico destinado para los ejes de la rueda delantera y trasera.  
La misma forma como el tope PHV2.  
Protección de brazos delanteros y de brazo basculante trasero.  
Material poliacetal POM-C. Diseño negro.  
Tapas de aluminio disponibles en 7 colores (anodinado).  
El precio siempre incluye el kit de montaje completo para el tipo de motocicleta correspondiente.

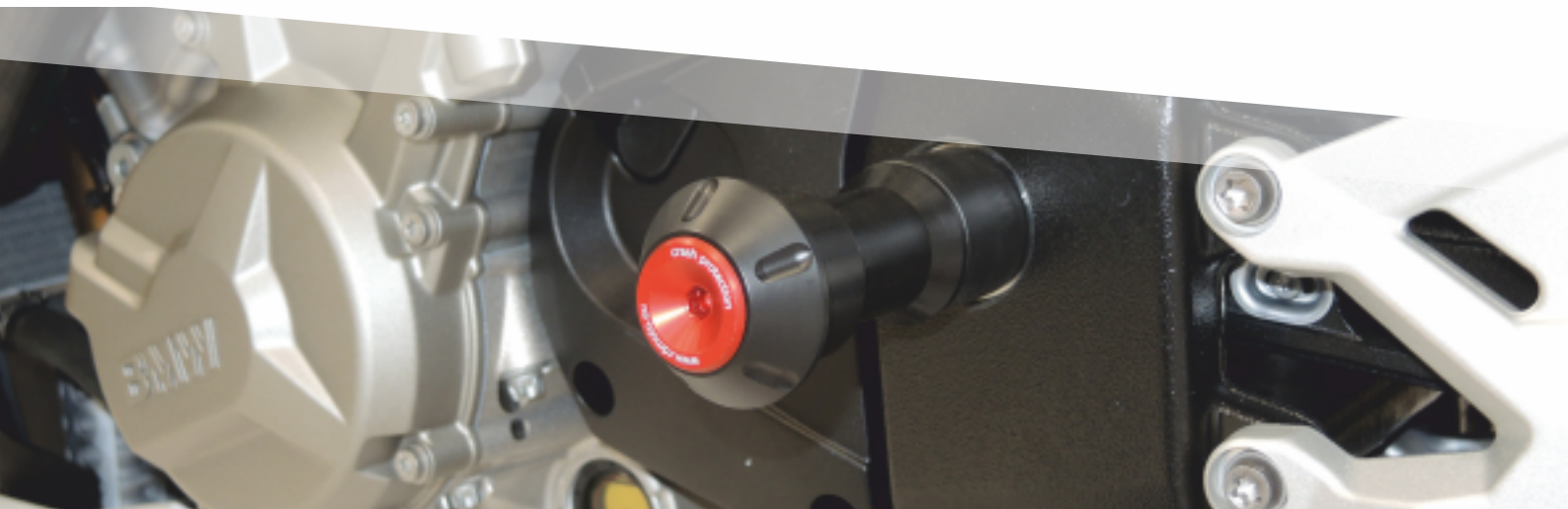
IT

Tampone paratelaio classico inteso per l'asse anteriore e posteriore della ruota.  
Forma identica come il tampone paratelaio PHV2.  
Protezione delle forcelle anteriori e della forcella posteriore girevole.  
Materiale POM-C. Colore nero.  
Copertine di alluminio disponibili in sette tonalità di colore (anodizzato).  
Il prezzo si riferisce sempre al montaggio kit completo per la motocicletta particolare.

FR

Tampon de protection classique destiné aux axes avant et arrière de la roue.  
La même forme que le pare-carter PHV2.  
Protection de la fourche avant et du bras oscillant.  
Matériel POM-C. Couleur noire.  
Les couvercles en aluminium sont accessibles en 7 teintes de couleur (anodisation).  
Notre prix vaut toujours pour un kit de montage complet correspondant au type de la moto.

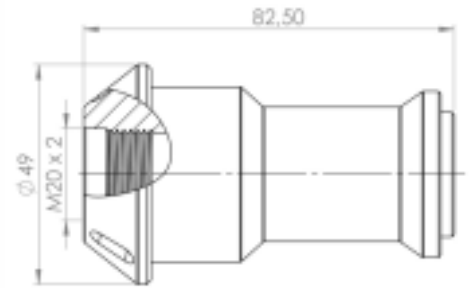
# | AHEAD TWISTER PROTECTORS





# TYPE PPH

## PRODUCT IN DETAIL



## COLOR VARIANTS OF COVER



POM-C MATERIAL

APPLICATION TABLE PAGE 94

MADE IN CZECHIA

35 MOTORCYCLES

EN

Ahead twister crash protector.  
Material POM-C. Black design.  
Low adhesion strength, good sliding properties, high strength.  
Aluminium caps available in 7 colors (anodized).  
Price is always for a complete mounting set for the motorcycle.

DE

Motorschutz Sturzpad.  
Material POM-C. Ausführung schwarz.  
Niedrige Haftkraft, gute Rutscheigenschaften, hohe Festigkeit.  
ALU Kappen in 7 Farbausführungen (Elox).  
Preis immer incl. des Montagesets komplett für den entsprechenden Motorradtyp.

ESP

Topes protectores antetibiales.  
Material poliacetal POM-C. Diseño negro.  
Fuerza de adhesión baja, buenas propiedades de deslizamiento, alta resistencia.  
Tapas de aluminio disponibles en 7 colores (anodinado).  
El precio siempre incluye kit de montaje completo para el tipo de motocicleta correspondiente.

IT

Protezione della tibia.  
Materiale POM-C. Colore nero.  
Forze adesive basse, buone caratteristiche di scorrimento, alta resistenza.  
Copertine di alluminio disponibili in sette tonalità di colore (anodizzato).  
Il prezzo si riferisce sempre al montaggio kit completo per la motocicletta particolare.

FR

Protection en forme de roulettes.  
Matériel POM-C. Couleur noire.  
Faibles forces d'adhésion, bonnes propriétés de glissement, haute résistance.  
Les couvercles en aluminium sont accessibles en 7 teintes de couleur (anodisation).  
Notre prix vaut toujours pour un kit de montage complet correspondant au type de la moto.

# | ENGINE PROTECTORS



RM1



PM3



PM2



PM4



# TYPE PM1/PM2/PM3/PM4

## PRODUCT IN DETAIL



POM-C MATERIAL

APPLICATION TABLE PAGE 94

MADE IN CZECHIA

50 MOTORCYCLES

## COLOR VARIANTS OF COVER



EN

PM1,PM2,PM4: Crash protector on the right side of the motorcycle.  
Replaces original cap on the crankshaft.  
Material POM-C. Black design.  
Aluminium caps available in 7 colors (anodized).  
PM3: Crash protector on the motor for selected Suzuki motorcycles.  
Mounting of protector on the duralumin milled adapter.

DE

PM1,PM2,PM4: Sturzpadd rechte Motorradseite.  
Ersetzt die Originalkappe für die Kurbelwelle.  
Material POM-C. Ausführung schwarz.  
ALU Kappen in 7 Farbausführungen (Elox).  
PM3: Motor Sturzpadd für bestimmte Motorräder Suzuki.  
Sturzpadd Halterung für den Dural gefrästen Adapter.

ESP

PM1, PM2, PM4: Tope protector para el lado derecho de la moto.  
Reemplaza la tapa original del cigüenal.  
Material poliacetal POM-C. Diseño negro.  
Tapas de aluminio disponibles en 7 colores (anodinado).  
PM3: Tope protector de motor para algunas motocicletas Suzuki.  
Sujeción del protector en el adaptador de duraluminio fresado.

IT

PM1, PM2, PM4: Tampone paratelaio per il lato destro della motocicletta.  
Sostituisce la copertina originale dell'albero a gomiti.  
Materiale POM-C. Colore nero.  
Copertine di alluminio disponibili in sette tonalità di colore (anodizzato).  
PM3: Tampone paratelaio per le motociclette selezionate Suzuki.  
Attaccamento del tampone paratelaio sull'adattatore di dural fresato.

FR

PM1, PM2, PM4: Protection moto pour le côté droit de la moto.  
Elle remplace le bouchon d'origine de leur vilebrequin.  
Matériel POM-C. Couleur noire  
Les couvercles en aluminium sont accessibles en 7 teintes de couleur (anodisation).  
PM3: Protection moteur pour les motos sélectionnées de la marque Suzuki.  
Fixation de protection sur un adaptateur fraisé en duralumin.

# | ENGINE COVERS



YAMAHA MT-09



YAMAHA MT-09



CBR 600RR



YAMAHA MT-10



# PRODUCT DETAIL

ONE KIT  
INCLUDES  
2 OR 3  
COVERS



## DESCRIPTION

Made from Long Glass Fibered Nylon.  
Fast and easy installation.  
Resistance to extreme temperatures.

### Kawasaki

Z250	Z300	EX300
Z800	Z800E	ZX-6R
Ninja250	Ninja300	ER-6N
ZX-10		

### Yamaha

MT-10	R1	MT-09
R25	R3	FZ9
R6		

### BMW

S1000R	S1000RR	S1000XR
--------	---------	---------

### Suzuki

GSXR600	GSXR750	GSXR1000
---------	---------	----------

### Ducati

1199	1299
------	------

### Honda

CBR600	CBR1000
--------	---------

APPLICATION TABLE PAGE 106

27 MOTORCYCLES

## | KAWASAKI ER-6N



## | SUZUKI GSX-R 1000



## | BMW S1000R



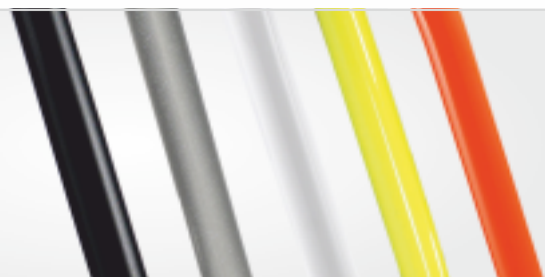
# | CRASH FRAMES





# PRODUCT DETAIL

COLOR VARIANTS  
OF CRASH FRAME



STEEL

APPLICATION TABLE PAGE 107

MADE IN CZECHIA

120 MOTORCYCLES

EN

The most effective protection of the motorcycle in the crash. Frames are designed to protect the bike as much as possible, but at the same time be as compact as possible.  
Material steel pipe with a diameter of 18-28 mm, depending on the type of motorcycle.  
Surface finish powder coating (heat treated powder paint).  
The mounting set is always included in the price.

DE

Der effektivste Schutz eines Motorrades beim Sturz. Die Bügel sind so projektiert, dass sie maximal das Motorrad schützen und gleichzeitig so wie möglich kompakt sind.  
Material Stahlrohr Ø 18 - 28 mm nach Motorradtyp.  
Oberflächenausführung Pulverbeschichtung (Pulverfarbstoff thermisch behandelt).  
Montageset immer incl. im Preis.

ESP

La protección más eficaz de la moto al caer. Están diseñados para proteger la moto al máximo siéndolo más compactos posible.  
Material de tubo de acero del calibre 18-28 mm, dependiendo del tipo de motocicleta.  
Recubrimiento de pintura electrostática (pintura en polvo térmicamente procesada).  
El kit de montaje siempre incluido en el precio.

IT

I paramotori sono la protezione migliore della motocicletta nel caso di caduta. I telai sono progettati per proteggere il più possibile la motocicletta, ma per essere contemporaneamente i più compatti possibile.  
Materiale - tubo di acciaio dei diametri da 18 a 28 mm in base al tipo della motocicletta.  
Finitura komaxit (colore in polvere termicamente trattato).  
Il kit di montaggio è sempre incluso nel prezzo.

FR

Protection la plus efficace de la moto en cas de sa chute. Les protections tubulaires sont conçues de manière à protéger une moto et être également les plus compacts possible.  
Matériel tube en acier dont le diamètre varie entre 18 et 28 mm selon le type de la moto.  
Finition de surface Komaxit (peinture en poudre cuite au four).  
Le jeu de montage est toujours inclus dans le prix.



YAMAHA MT-07



KAWASAKI VERSYS 650



KTM 950 ADVENTURE



HONDA NX650 DOMINATOR



HONDA CRF1000L AFRICA TWIN DCT



BMW R1150 GS ADVENTURE



BMW F650/700/800 GS





KTM 1290 SUPERDUKE GT



BMW R1200 GS Adventure





Honda NC700/750



Kawasaki VN 650 Vulcan



Suzuki DR 800 BIG



Suzuki DL 1000 V-Strom





KTM 1050 ADVENTURE



HONDA CRF1000L AFRICA TWIN





YAMAHA MT-07

TRIUMPH TIGER 1050





# | TRAVEL BAGS





# PRODUCT DETAIL

PRODUCT  
IN DETAIL



MADE IN CZECHIA

WATER-PROOF

EN

Our travel bags are made to measure for each specific type of RDmoto crash frame. Because of that, fitting is smooth and easy, something achieved also thanks to innovation techniques. All our bags are made from water-proof, highly durable Cordura material in combination with reflective tape. Even at high-speeds our products do not affect the riding attributes of your bike. Sold in pairs, 1 for each side of your bike.

DE

Die Taschen sind für bestimmte Type der Sturzpads geeignet. Sie werden einfach auf den Pad aufgesetzt. Dank perfekten Zuschnitt halten sie fest am Pad. Verwendetes Material ist Cordura, Wasserfest mit hoher Beständigkeit in Kombination mit Reflexionsband. Auch höhere Geschwindigkeit hat keinen Einfluss auf das Fahrverhältnis des Matorrades. Die Taschen werden als eine Einheit im Paar verkauft: 1x linke Tasche, 1x rechte Tasche.

ESP

Las bolsas están diseñadas para cada tipo particular de marcos anticaída. Simplemente se colocan y encajan perfectamente gracias a sus cortes sofisticados. Para estos productos se usan materiales Cordura, impermeables y con gran durabilidad, combinados con cinta reflectante. Las bolsas no cambian las características de conducción de la motocicleta ni siquiera a velocidades más altas. Se venden por pares, 1 para la izquierda y 1 para la derecha.

IT

Le nostre borse da viaggio sono progettate per ogni tipo specifico di telai Rdmoto. Infatti il montaggio è facile e veloce, grazie al design innovativo e alle tecniche di lavorazione. Tutte le nostre borse sono realizzate in materiale Cordura altamente resistente e impermeabile, in combinazione con nastro riflettente. Anche a velocità elevata le nostre borse non influenzano la stabilità della moto e il piacere di guida. Vendute a coppie, 1 per lato sinistro 1 per lato destro della motocicletta.

# | MOUNTING STANDS





## TYPE MS01R

EN

Mounting stand to lift the rear of the motorcycle.  
Rubberized slot below the swingarm.  
Adjustable width range of adapters.  
Dismount design of the stands.  
Surface finish red powder coating.

DE

Motorrad-Ständer, hinten.  
Gummierte Fuß unter die Schwinggabel.  
Einstellbarer Abstand der Adapter.  
Falteständer.  
Oberflächenbehandlung Pulverbeschichtung rot.

ESP

Caballete de montaje para levantar la parte trasera de la moto.  
Piezas engomadas por debajo del brazo basculante.  
Rango de ancho ajustable de los adaptadores.  
Versión desmontable del caballete.  
Recubrimiento de pintura electrostática en color rojo.

IT

Cavalletto di montaggio per sollevare la parte posteriore della motocicletta.  
Fessure gommate sotto il forcellone oscillante.  
Larghezza regolabile della campata degli adattatori.  
Cavalletto smontabile.  
Finitura - komaxit rosso.

FR

Support de montage pour soulever la partie arriere de la moto.  
Pied en caoutchouc au-dessous du bras oscillant.  
Gamme de largeur réglable des adaptateurs.  
Exécution démontable du support.  
Finition de surface Komaxit en couleur rouge.



## TYPE MS02R

EN

Mounting stand to lift the rear of the motorcycle.  
Lifting using rollers in the swingarm. Rollers are not included.  
Adjustable width range of adapters.  
"V" adapters for safe lifting the motorcycle.  
Dismount design of the stands.  
Surface finish red powder coating.

DE

Hebemontageständer – Motorrad hinten.  
Heben mit Heckständeraufnahme in der Schwinggabel. Die Rollen sind nicht Bestandteil des Montagesatzes.  
Einstellbarer Abstand der Adapter.  
„V“ Adapter zum sicheren Motorrad aufheben.  
Klappständer.

ESP

Caballete de montaje para levantar parte trasera de la moto.  
Levantamiento utilizando casquillos del brazo basculante. Los casquillos no van incluidos en el kit de montaje.  
Rango de ancho ajustable de los adaptadores.  
Adaptadores en V para levantamiento seguro de la moto.  
Versión desmontable del caballete.

IT

Cavalletto di montaggio per sollevare la parte posteriore della motocicletta.  
Il sollevamento occorre usando i rulli nel forcellone oscillante. I rulli non sono inclusi nel kit di montaggio.  
Larghezza regolabile della campata degli adattatori.  
"V" adattatori per sollevare la motocicletta con sicurezza.

FR

Support de montage pour soulever la partie arriere de la moto.  
Pied en caoutchouc au-dessous du bras oscillant.  
Gamme de largeur réglable des adaptateurs.  
Exécution démontable du support.  
Finition de surface Komaxit en couleur rouge.



# TYPE MS03R



EN

The stands lift the front of the motorcycle under the forks. Dismount design. Stands include the steel adapters for convenient and safe lifting the motorcycle. Adjustable width range of adapters. Surface finish red powder coating.

DE

Hebemontageständer vorne, unter der Gabeln. Klappständer. Bestandteil des Ständers sind Stahladapter zur bequemen und sicheren Motorrad Heben. Einstellbarer Abstand der Adapter. Oberflächenbehandlung Pulverbeschichtung rot.

ESP

Levanta la moto en la parte delantera por delante de los brazos. Versión desmontable del caballete. El caballete incluye adaptadores de acero para levantamiento cómodo y seguro de la moto. Rango de ancho ajustable de los adaptadores. Recubrimiento de pintura electrostática en color rojo.

IT

Per sollevare la motocicletta nella parte anteriore sotto le forcelle. Cavalletto smontabile. Il cavalletto contiene adattatori di acciaio per un comodo e sicuro sollevamento della motocicletta. Larghezza regolabile della campata degli adattatori. Finitura - komaxit rosso.

FR

Ils soulevent la moto dans la partie avant au-dessous des fourches. Exécution démontable. Le support contient des adaptateurs en acier qui permettent un soulèvement commode et sur de la moto. Gamme de largeur réglable des adaptateurs. Finition de surface Komaxit en couleur rouge.

# TYPE MS04R



EN

The stands lift the the motorcycle in place of the neck control. Can dismount the lower part of the stand from the top. Adjustable stand height. Stands not include the spindle needed for lifting the motorcycle, must choose in our application table. Surface finish red powder coating.

DE

Montageständer- hebt das Motorrad in der Lenkung. Demontierbarer ober und unter Ständerteil. Stellbare Ständerhöhe. Bestandteil des Ständers ist nicht der Bolzen, muss aus der Anwendungstabelle ausgewählt werden. Oberflächenbehandlung Pulverbeschichtung rot.

ESP

Levanta la moto en la parte de la barra de dirección. La parte inferior del caballete se puede desmontar de la parte superior. Rango de altura del caballete ajustable. Gorrón de caballete necesario para levantar la motocicleta no incluido, es necesario seleccionarlo de nuestra tabla de aplicaciones. Recubrimiento de pintura electrostática en color rojo.

IT

Per sollevare la motocicletta nel sito dello sterzo. La parte inferiore del cavalletto puo essere separata dalla parte superiore. Altezza del cavalletto regolabile. Il tenone necessario per il sollevamento della motocicletta non e incluso nel cavalletto - bisogna sceglierlo dalla nostra tabella di applicazioni. Finitura - komaxit rosso.

FR

Ils soulevent la moto a l'endroit du tube de colonne de direction. Il est possible séparer la partie inférieure du support et sa partie supérieure en démontant le support. Hauteur réglable du support. Le support ne contient pas de boulon qui est nécessaire pour soulever la moto, il faut le choisir d'apres notre table d'application.



# TYPE MS05R



EN

For motorcycles with an overhang the rear wheel. Stand spindle is plugged into the rear wheel on the left side. Mounted at the 2 ball bearings. Stands not include the spindle needed for lifting the motorcycle, must choose in our application table. Surface finish red powder coating.

DE

Für Motorräder mit einarmschwinge Rad. Der Ständerbolzen ist von links des Rades hinten einzuschieben. Auflage auf 2 Kugellagern. Bestandteil des Ständers ist nicht der Bolzen, muss aus der Anwendungstabelle ausgewählt werden. Oberflächenbehandlung Pulverbeschichtung rot.

ESP

Para las motos de suspensión de rueda horizontal. Gorrón de caballete insertado en la rueda trasera desde la parte izquierda. Colocación en 2 rodamientos de bolas. Gorrón de caballete necesario para levantar la motocicleta no incluido, es necesario seleccionarlo de nuestra tabla de aplicaciones. Recubrimiento de pintura electrostática en color rojo.

IT

Per le motociclette con la ruota a sbalzo. Il tenone del cavalletto si inserisce nella ruota posteriore dal lato sinistro. Depositato su due cuscinetti a sfera. Il tenone necessario per il sollevamento della motocicletta non è incluso nel cavalletto – bisogna sceglierlo dalla nostra tabella di applicazioni. Finitura – komaxit rosso.

FR

Pour les motos avec l'ajustement libre de la roue. Le boulon du support est introduit dans la roue arriere du côté gauche. Ajustement sur 2 roulements a billes. Le support ne contient pas de boulon qui est nécessaire pour soulever la moto, il faut le choisir d'apres notre table d'application. Finition de surface Komaxit en couleur rouge.

# TYPE MS06R



EN

Combination stands MS01R and MS02R. In the package you receive a rubberized adapters and steel "V" adapters. Adjustable width range of adapters. Dismount design. Surface finish red powder coating.

DE

Kombination der Ständer MS01R a MS02R. In der Packung erhalten Sie gummierte Adapter und Stahl „V“ Adapter. Einstellbarer Abstand der Adapter. Klappständer. Oberflächenbehandlung Pulverbeschichtung rot.

ESP

Combinación de caballetes MS01R y MS02R. En el paquete recibirán sea adaptadores engomados, sea adaptadores en V de acero. Rango de ancho ajustable del caballete. Versión desmontable. Recubrimiento de pintura electrostática en color rojo.

IT

La combinazione dei cavalletti MS01R e MS02R. Nel pacchetto troverete sia gli adattatori gommati che gli "V" adattatori di acciaio. Larghezza della campata degli adattatori regolabile. Cavalletto smontabile. Finitura – komaxit rosso.

FR

Combinaison des supports MS01R et MS02R. Un emballage contiendra non seulement des adaptateurs en caoutchouc mais aussi des adaptateurs en acier en «V». Gamme de largeur réglable des adaptateurs. Exécution démontable. Finition de surface Komaxit en couleur rouge.

# TYPE MS07R



EN

Combination stands MS01R, MS02R and MS03R.  
In the package you receive a rubberized adapters, adapters designed in the shape „V“ and the steel adapters to lift the motorcycle in front under the forks.  
Adjustable width range of adapters.  
Dismount design.  
Surface finish red powder coating.

DE

Kombination der Ständer MS01R, MS02R a MS03R.  
In der Packung erhalten Sie gummierte Adapter, „V“ Adapter und Stahladapter zum Motorrad Heben – vorn unter den Gabeln.  
Einstellbarer Abstand der Adapter.  
Klappständer.  
Oberflächenbehandlung Pulverbeschichtung rot.

ESP

Combinación de caballetes MS01R, MS02R y MS03R.  
El paquete contiene adaptadores engomados, adaptadores en V y adaptadores de acero para levantar la moto por la parte delantera por debajo de los brazos.  
Rango de ancho ajustable de los adaptadores.  
Versión desmontable.  
Recubrimiento de pintura electrostática en color rojo.

IT

La combinazione dei cavalletti MS01R, MS02R e MS03R.  
Nel pacchetto troverete gli adattatori gommati, gli „V“ adattatori e gli adattatori di acciaio per sollevare la motocicletta nella parte anteriore sotto la forcella.  
Larghezza della campata degli adattatori regolabile.  
Cavalletto smontabile.  
Finitura – komaxit rosso.

FR

Combinaison des supports MS01R, MS02R a MS03R.  
Un emballage contient les adaptateurs en caoutchouc, les adaptateurs en forme «V» les adaptateurs en acier pour soulever la moto dans sa partie avant sous les fourches.  
Gamme de largeur réglable des adaptateurs.  
Exécution démontable.  
Finition de surface Komaxit en couleur rouge.

# TYPE MS01NR



EN

Mounting stand to lift the rear of the motorcycle.  
Rubberized slot below the swingarm.  
Adjustable width range of adapters.  
Not dismount design.  
Surface finish red powder coating.

DE

Hebemontageständer – Motorrad hinten.  
Gummierte Füße unter die Kippgabel.  
Einstellbarer Abstand der Adapter.  
Fester Ständer.  
Oberflächenbehandlung Pulverbeschichtung rot.

ESP

Caballete de montaje para levantar la parte trasera de la moto.  
Piezas engomadas para debajo del brazo basculante.  
Rango de ancho ajustable de los adaptadores.  
Versión de caballete no desmontable.  
Recubrimiento de pintura electrostática en color rojo.

IT

Il cavalletto di montaggio per sollevare la parte posteriore della motocicletta.  
Fessure gommate sotto il forcellone oscillante.  
Larghezza della campata degli adattatori regolabile.  
Il cavalletto non smontabile.  
Finitura – komaxit rosso.

FR

Support de montage pour soulever la partie arriere de la moto.  
Pieds en caoutchouc sous le bras oscillant.  
Gamme de largeur réglable des adaptateurs.  
Exécution démontable du support.  
Finition de surface Komaxit en couleur rouge.



# TYPE MS02NR



DE

Montageständer – Motorrad hinten.  
Heben mit Schwenkgabel. Rollen sind nicht Bestandteil des Montagesets.  
Einstellbarer Abstand der Adapter.  
„V“ Adapter für sicheres Motorrad Heben.  
Fester Ständer.  
Oberflächenbehandlung Pulverbeschichtung rot.

EN

Mounting stand to lift the rear of the motorcycle.  
Lifting using rollers in the swingarm. Rollers are not part of the set.  
Adjustable width range of adapters.  
"V" adapters for safe lifting the motorcycle.  
Not dismount design.  
Surface finish red powder coating.

ESP

Caballete de montaje para levantar la parte trasera de la moto.  
Levantamiento utilizando casquillos de brazo basculante. Los casquillos no van incluidos en el kit de montaje.  
Rango de ancho ajustable de los adaptadores.  
Adaptadores en V para un levantamiento seguro de la moto.  
Versión del caballete no desmontable.  
Recubrimiento de pintura electrostática en color rojo.

IT

Il cavalletto di montaggio per sollevare la parte posteriore della motocicletta.  
Il sollevamento occorre usando i rulli nel forcellone oscillante. I rulli non sono inclusi nel kit di montaggio.  
Larghezza della campata degli adattatori regolabile.  
"V" adattatori per un sollevamento sicuro della motocicletta.  
Il cavalletto non smontabile.  
Finitura – komaxit rosso.

FR

Support de montage pour soulever la partie arriere de la moto.  
Soulevement au moyen d'un pion du bras oscillant. Les pions ne font pas partie du kit de montage.  
Gamme de largeur réglable des adaptateurs.  
Adaptateur «V» pour soulever surement la moto.  
Exécution démontable du support.  
Finition de surface Komaxit en couleur rouge.

# TYPE MS03NR



DE

Hebemontageständer vorne, unter den Gabeln.  
Fester Ständer.  
Bestandteil des Ständers sind Stahladapter zur bequemen und sicheren Motorrad Heben.  
Einstellbarer Abstand der Adapter.  
Oberflächenbehandlung Pulverbeschichtung rot.

EN

The stands lift the front of the motorcycle under the forks.  
Not dismount design.  
Stands include the steel adapters for convenient and safe lifting the motorcycle.  
Adjustable width range of adapters.  
Surface finish red powder coating.

ESP

Levanta la moto por la parte delantera por debajo de los brazos.  
Versión no desmontable.  
El caballete incluye los adaptadores de acero para el levantamiento cómodo y seguro de la moto.  
Rango de ancho ajustable de los adaptadores.  
Recubrimiento de pintura electrostática en color rojo.

IT

Per sollevare la motocicletta nella parte anteriore sotto la forcella.  
Il cavalletto non smontabile.  
Il cavalletto contiene adattatori di acciaio per un comodo e sicuro sollevamento della motocicletta.  
Larghezza della campata degli adattatori regolabile.  
Finitura – komaxit rosso.

FR

Ils soulevent la moto dans la partie avant sous la fourche.  
Exécution démontable.  
Les adaptateurs en acier font partie intégrale du support pour assurer un soulevement commode et sur de la moto.  
Gamme de largeur réglable des adaptateurs.  
Finition de surface Komaxit en couleur rouge.

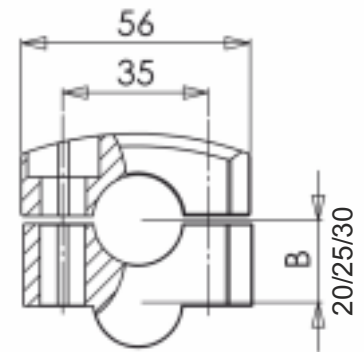
# | HANDLEBAR RISERS





# PRODUCT DETAIL

ZR22/ZR28



ZRD-25



ALUMINIUM

MADE IN CZECHIA

EN

Adapters for increase the handlebars. Material aluminum.  
Finish black or silver anodized.  
The handlebar diameters 22 mm and 28 mm.  
Increase the handlebars by 20mm, 25mm and 30 mm.

DE

Adapter zur Lenkstange heben. Material ALU.  
Oberflächenbehandlung ELOX schwarz oder silbern.  
Für Lenkstange Ø 22mm a 28mm.  
Lenkstange heben um 20mm, 25mm a 30mm.

ESP

Adaptadores para levantar el manillar, fabricados en aluminio.  
Superficie anodizada, color negro o plata.  
Para diámetros de manillares de 22mm y 28mm.  
Levantamiento del manillar de 20mm, 25mm y 30mm.

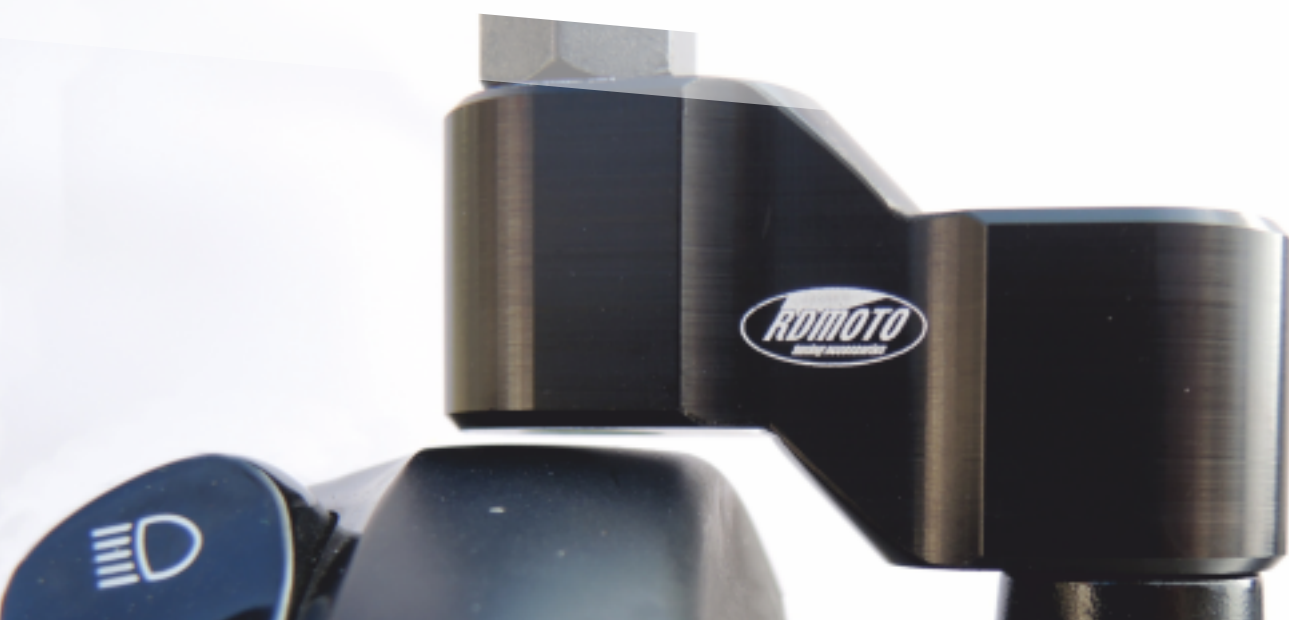
IT

Adattatori per sollevare i manubri. Materiale alluminio.  
Finitura anodizzata, colore nero o d'argento.  
Per i manubri con il diametro di 22 mm e 28 mm.  
Sollevamento dei manubri di 20 mm, 25 mm e 30 mm.

FR

Adaptateurs pour augmenter le guidon. Matériel aluminium.  
Finition de surface anodisation en couleur noire ou argentée  
Pour les diamètres du guidon 22 mm et 28mm.  
Guidon augmenté de 20 mm, 25 mm et 30 mm.

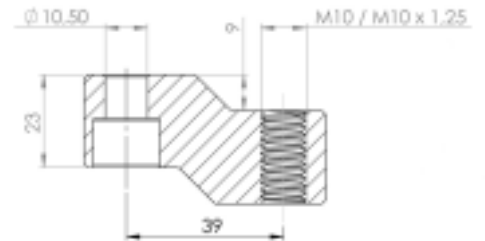
# | MIRROR EXTENDED ADAPTERS





# RZ1050/RZ1025

COLOR  
VARIANTS



ALUMINIUM

MADE IN CZECHIA

EN

Adapters for expansion of the mirrors. Material aluminum.  
Improves the view in the rearview mirror.  
Finish black or silver anodized.  
Threads M10x1,25 and M10x1,5.

DE

Adapter zum Spiegel erweitern. Aus ALU.  
Verbessert die Aussicht im Rückspiegel.  
Oberflächenbehandlung ELOX schwarz oder silbern.  
Gewinde M10x1,25 a M10x1,5.

ESP

Adaptadores para ampliación de retrovisores. Fabricados en aluminio.  
Mejora la visión en los retrovisores.  
Superficie anodizada, color negro o plateado.  
Roscas M10x1,25 y M10x1,5.

IT

Adattatori per allargare gli specchi. Prodotto di alluminio.  
Per migliorare la vista nello specchietto retrovisore.  
Finitura anodizzata, colore nero o d'argento.  
Filetti M10x1,25 e M10x1,5.

FR

Adaptateurs pour élargir les rétroviseurs. Fabriqués en aluminium.  
Il améliore la vue dans le rétroviseur.  
Finition de surface anodisation en couleurs noire ou argentée  
Filets M10x1,25 et M10x1,5.

# | HANDLEBAR ENDS





# PRODUCT DETAIL

## DESIGN VARIANTS



ALUMINIUM

MADE IN CZECHIA

## COLOR VARIANTS



EN

Not only tuning, but also a designer accessory.  
Choice of 4 types of the weights.  
Available in 7 colors.  
Installation handlebars weights by adapters for the type of motorcycle.

DE

Nicht nur Tuning, sondern auch ein Design Element.  
Auswahl aus 4 Typen der Gewichte.  
In 7 Farbvarianten.  
Montage der Gewichte mit Adapter na Motorrad Typ.

ESP

Es un accesorio de tuneo, pero también de diseno.  
Elección de 4 tipos de contrapesos.  
Disponible en 7 variantes de colores.  
Montaje de contrapesos por medio de adaptadores para el tipo de motocicleta.

IT

Non solo un accessorio tuning, ma anche un accessorio del design.  
Quattro tipi di contrappesi disponibili.  
Sette opzioni di colore disponibili.  
Montaggio dei contrappesi usando gli adattatori per il tipo particolare della.

FR

Non seulement un accessoire de tuning mais aussi un élément de design.  
Vous pouvez choisir parmi 4 types de poids.  
Accessibles en 7 teintes de couleur.  
Les poids sont montés au moyen des adaptateurs correspondant a tout type de moto.







# | SWINGARM STAND SUPPORT





# PRODUCT DETAIL

## DESIGN VARIANTS



EXCLUSIVE

RACE

STANDARD

ALUMINIUM

MADE IN CZECHIA

## COLOR VARIANTS



EN

Practical, but also tuning accessory.  
Used primarily for lifting the rear of the motorcycle together with mounting stand (MS02R and MS02NR).  
Types STANDARD, RACE, EXCLUSIVE.  
7 color variants.  
Rollers Exclusive are made of polyamide and are fitted with an anodized aluminum insert.

DE

Praktisches, aber auch ein Tuning Teil.  
Dient vor allem zum Motorrad heben hinten, zusammen mit dem Montageständer (bei uns MS02R und MS02NR).  
Rollen STANDARD, RACE, EXCLUSIVE.  
7 Farbvarianten.  
Rollen Exclusive sind aus Polyamid mit Dural eloxiertem Füllstück.

ESP

Un accesorio práctico y de tuneo.  
Sirve sobre todo para levantar la parte trasera de la moto junto con el caballete de montaje (en nuestra tienda MS02R a MS02NR).  
Casquillos STANDARD RACE, EXCLUSIVE. 7 variantes de colores.  
Los casquillos están fabricados en poliamida y equipados con un inserto de duraluminio anodinado.

IT

Un accessorio pratico e di tuning.  
Si usa in particolare per sollevare la parte posteriore della motocicletta insieme al cavalletto di montaggio (nostri tipi MS02R e MS02NR).  
I rulli STANDARD, RACE, EXCLUSIVE. Sette opzioni di colore.  
I rulli Exclusive sono prodotti di poliammide e sono attrezzati di un'inserto dural anodizzato.

FR

Un accessoire pratique mais aussi celui de tuning.  
Il sert surtout a soulever la partie arriere de la moto ensemble avec le support de montage (dans notre cas MS02R et MS02NR).  
Pions STANDARD, RACE, EXCLUSIVE. 7 teintes de couleur.  
Les pions Exclusive sont fabriqués en polyamide et munis d'une insertion en duralumin anodisé.

# | OIL PLUGS





# PRODUCT DETAIL

## DESIGN VARIANTS



ALUMINIUM

MADE IN CZECHIA

EN

Replace the original oil caps.  
Material aluminum. Available in 7 colors.  
Frequently used by racing teams.

DE

Ersetz die original Ölverschlüsse.  
Material ALU. 7 Farbvarianten.  
Oft von Rennteams verwendet.

ESP

Reemplaza los tapones de aceite originales.  
Fabricadas en aluminio. Disponible en 7 variantes de colores.  
Utilizado con frecuencia por los equipos de carreras.

IT

Per sostituire gli originali tappi dell'olio.  
Materiale – alluminio. Disponibile in sette opzioni di colore.  
Sfruttato spesso dai racing team.

FR

Ils remplacent des bouchons d'huile d'origine.  
Matériel aluminium. Ils sont accessibles en 7 teintes de couleur.  
Ils sont souvent utilisés par des équipes de course.

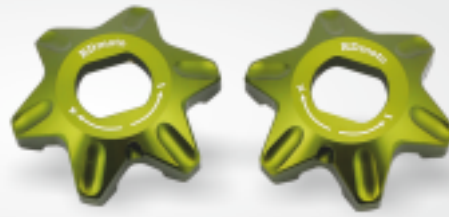
# | FORK PRELOAD ADJUSTER





# PRODUCT DETAIL

## DESIGN



ALUMINIUM

MADE IN CZECHIA



EN

Used to easy and quickly set up of toughness front forks.  
Material aluminum, milled design, anodized finish.  
7 color variants, nuts in 5 sizes.

DE

Dient zur bequemen und schnellen Einstellen der Gabelsteife vorn.  
Material ALU, Design Fräsen, Oberfläche ELOX.  
7 Farbvarianten, 5 Muttermassen.

ESP

Sirve para un ajuste cómodo y rápido de la rigidez del brazo delantero.  
Fabricadas en aluminio, fresado de diseño, superficie anodizada.  
7 variantes de colores, 5 tamaños de tuercas.

IT

Per una comoda e veloce regolazione di solidità della forcella anteriore.  
Materiale - alluminio, fresatura di design, finitura anodizzata.  
Sette opzioni di colore, 5 dimensioni dei dadi.

FR

Ils servent à régler rapidement et à l'aise la rigidité de la fourche avant.  
Matériel aluminium, fraisage de design, finition de surface anodisation  
7 teintes de couleurs, 5 dimensions des écrous.

# NUT FOR FRONT FORK



EN

Replace the original steering nut.  
Material aluminum, anodized finish.  
7 color variants.

DE

Ersetzt die originale Steuerkopfmutter.  
Material ALU, Design Fräsen, Oberfläche ELOX.  
7 Farbvarianten.

ESP

Reemplaza la tuerca original de la tija superior.  
Fabricadas en aluminio, superficie anodizada.  
7 variantes de colores.

IT

Per sostituire il dado originale degli occhiali superiori.  
Materiale - alluminio, finitura anodizzata.  
Sette opzioni di colore.

FR

Ils remplacent un écrou d'origine du té de fourche supérieur.  
Matériel aluminium, finition de surface anodisation  
7 Teintes de couleurs.





# BRAKE FLUID COVER



EN

Replace the original brake tank caps.  
Material: aluminum, anodized finish.  
6 color variants.

DE

Ersetz die Originalkappe des Bremsflüssigkeitsbehälters.  
Material ALU, Design Fräsen, Oberfläche ELOX.  
6 Farbvarianten.

ESP

Reemplazan la tapa original del líquido de frenos.  
Fabricadas en aluminio, superficie anodizada.  
6 variantes de colores.

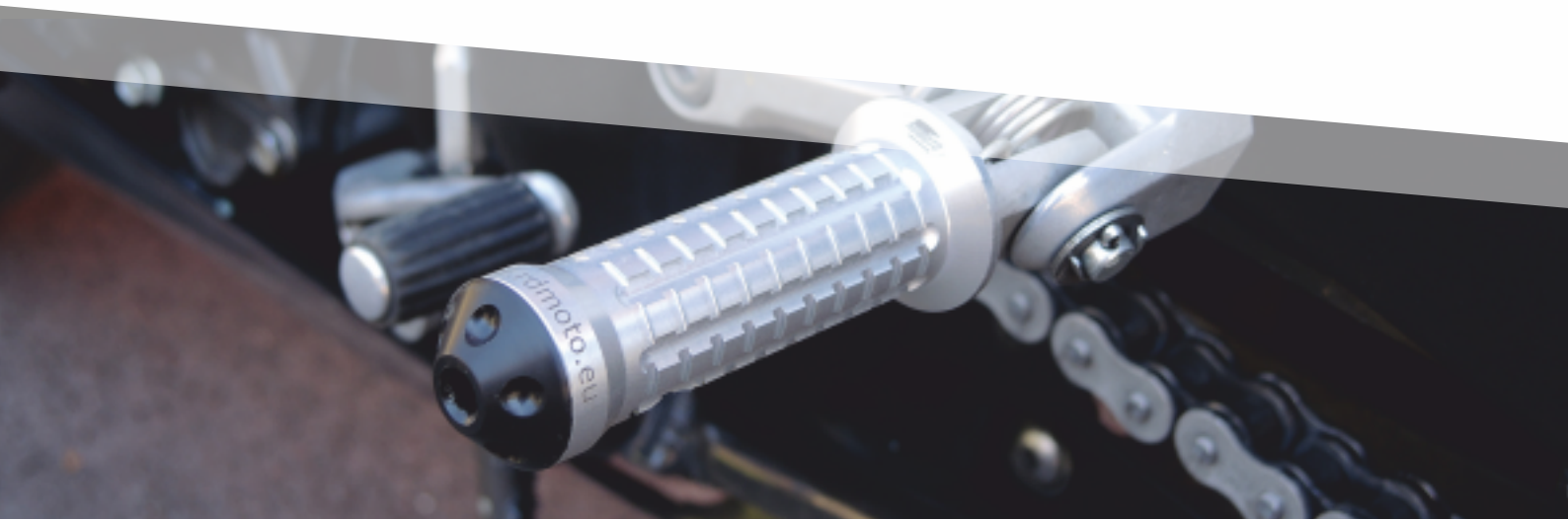
IT

Per sostituire il tappo originale del contenitore freno.  
Materiale - alluminio, finitura anodizzata.  
Sei opzioni di colore.

FR

Ils remplacent le couvercle d'origine du récipient de frein.  
Matériel aluminium, finition de surface anodisation.  
6 teintes de couleur.

# | FOOT PEGS





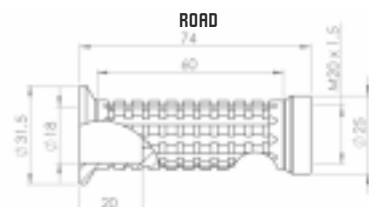
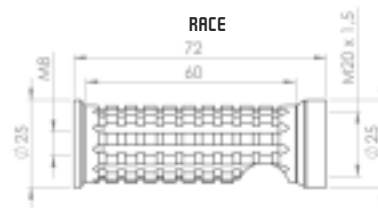
# PRODUCT DETAIL

DESIGN  
VARIANTS



MADE IN CZECHIA

ALUMINIUM



EN

Foot pegs Road and Race.  
Material aluminum T7075.  
Anodized finish, 7 color variants.  
From the front foot peg is removable nylon cap which prevents chafing at a higher tilt.  
To the foot pegs Road is needed to buy knuckles for the motorcycle.

DE

Fußrasten Road und Race.  
Aus ALU T7075.  
Oberfläche ELOX, 7 Farbvarianten  
Von der Stirnseite der Fußrasten ist eine entfernbare Silikonkappe, zum Abriebschutz.  
Zu dem Roads muss Montagekit nach Motorradtyp zugekauft werden.

ESP

Reposapiés Road y Race.  
Fabricados en aluminio T7075.  
Superficie anodizada, 7 variantes de colores.  
En la parte frontal hay una tapa de nailon desmontable que evita la abrasión en la zona inclinación más grande.  
Para los reposapiés Road hace falta comprar articulaciones para el tipo de motocicleta

IT

Poggiapiedi Road e Race.  
Prodotti di alluminio T7075.  
Finitura anodizzata, sette opzioni di colore.  
Alla fronte del poggiapiedi si trova un coperchio di nylon smontabile per evitare le abrasioni nel caso di una maggior inclinazione.  
Per il poggiapiedi Road bisogna comprare le articolazioni per la motocicletta particolare.

FR

Repose-pieds Road et Race.  
Ils sont fabriqués en aluminium T7075.  
Finition de surface anodisation, 7 variantes de couleur.  
La tête du repose-pied comprend un couvercle démontable en nylon empêchant un abrasement en cas d'une inclinaison élevée.  
Il est nécessaire d'acheter des joints aux repose-pieds Road correspondant à la moto.

## BRAKE AND CLUTCH LEVERS

	Year	Brake lever short	Clutch lever short	Brake lever standard	Clutch lever standard
<b>Aprilia</b>					
RSV4/RSV4 FACTORY	2009-2015	RDLB-F11	RDLC-V4	RDLBL-F11	RDLCCL-V4
RSV MILLE / R	2004-2008	RDLB-F11	RDLC-H11	RDLBL-F11	RDLCCL-H11
RSV MILLE / R	1999-2003	RDLB-DB80	RDLC-DC80	RDLBL-DB80	RDLCCL-DC80
TUONO V4R / Factory	2011-2016	RDLB-DB80	RDLC-V4	RDLBL-DB80	RDLCCL-V4
TUONO / R	2003-2009	RDLB-DB80	RDLC-DC80	RDLBL-DB80	RDLCCL-DC80
FALCO / SL1000	2000-2004	RDLB-DB80	RDLC-DC80	RDLBL-DB80	RDLCCL-DC80
CAPONORD / ETV1000	2002-2007	RDLB-F16	RDLC-DC80	RDLBL-F16	RDLCCL-DC80
RST1000 FUTURA	2001-2004	RDLB-F16	RDLC-DC80	RDLBL-F16	RDLCCL-DC80
SHIVER / GT	2007-2015	RDLB-F23	RDLC-C23	RDLBL-F23	RDLCCL-C23
DORSODURO 750	2008-2015	RDLB-F23	RDLC-C23	RDLBL-F23	RDLCCL-C23
MANA	2007-2012	RDLB-F23	-	RDLBL-F23	-
DORSODURO 1200	2011-2015	RDLB-DB80	RDLC-DC80	RDLBL-DB80	RDLCCL-DC80
CAPONORD 1200	2014-2015	RDLB-DB80	RDLC-DC80	RDLBL-DB80	RDLCCL-DC80
<b>Benelli</b>					
BN 600	2014-2015	RDLB-F16	RDLC-HLC	RDLBL-F16	RDLCCL-HLC
<b>BMW</b>					
S1000RR	2010-2014	RDLB-F22	RDLC-B22	RDLBL-F22	RDLCCL-B22
S1000R	2014	RDLB-F22	RDLC-B22	RDLBL-F22	RDLCCL-B22
S1000RR	2015-2016	RDLB-F22	RDLC-B22H	RDLBL-F22	RDLCCL-B22H
S1000R	2015-2016	RDLB-F22	RDLC-B22H	RDLBL-F22	RDLCCL-B22H
HP2 SPORT	2008-2011	RDLB-M1	RDLC-M11	RDLBL-M1	RDLCCL-M11
K1600 GT/GTL	2011-2015	RDLB-B1	RDLC-B2	RDLBL-B1	RDLCCL-B2
K1300 S/R/GT	2009-2015	RDLB-B1	RDLC-B2	RDLBL-B1	RDLCCL-B2
K1200R	2005-2008	RDLB-B1	RDLC-B2	RDLBL-B1	RDLCCL-B2
K1200R SPORT	2006-2008	RDLB-B1	RDLC-B2	RDLBL-B1	RDLCCL-B2
K1200S	2004-2008	RDLB-B1	RDLC-B2	RDLBL-B1	RDLCCL-B2
R1200R	2006-2014	RDLB-B1	RDLC-B2	RDLBL-B1	RDLCCL-B2
R1200RT /SE	2010-2013	RDLB-B1	RDLC-B2	RDLBL-B1	RDLCCL-B2
R1200S	2006-2008	RDLB-B1	RDLC-B2	RDLBL-B1	RDLCCL-B2
R1200ST	2005-2008	RDLB-B1	RDLC-B2	RDLBL-B1	RDLCCL-B2
R1200GS	2004-2012	RDLB-B1	RDLC-B2	RDLBL-B1	RDLCCL-B2
R1200GS ADVENTURE	2006-2013	RDLB-B1	RDLC-B2	RDLBL-B1	RDLCCL-B2
R1200GS	2013-2014	RDLB-HR01	RDLC-HL01	RDLBL-HR01	RDLCCL-HL01
R1200GS ADVENTURE	2014-2015	RDLB-HR01	RDLC-HL01	RDLBL-HR01	RDLCCL-HL01
F800S	2006-2014	RDLB-B1	RDLC-B8	RDLBL-B1	RDLCCL-B8
F800ST	2006-2013	RDLB-B1	RDLC-B8	RDLBL-B1	RDLCCL-B8
F800R	2009-2016	RDLB-B1	RDLC-B8	RDLBL-B1	RDLCCL-B8
F800GT	2013-2016	RDLB-B1	RDLC-B8	RDLBL-B1	RDLCCL-B8
F800GS / Adventure	2008-2016	RDLB-B1	RDLC-B8	RDLBL-B1	RDLCCL-B8



<b>F700GS</b>	<b>2013-2016</b>	RDLB-B1	RDLC-B8	RDLBL-B1	RDCLCL-B8
<b>F650GS</b>	<b>2008-2012</b>	RDLB-B1	RDLC-B8	RDLBL-B1	RDCLCL-B8
<b>HP2 Enduro</b>	<b>2005-2008</b>	RDLB-B1	RDLC-B2	RDLBL-B1	RDCLCL-B2
<b>HP2 Megamoto</b>	<b>2006-2009</b>	RDLB-B1	RDLC-B2	RDLBL-B1	RDCLCL-B2
<b>Buell</b>					
<b>1125R</b>	<b>2008-2009</b>	RDLB-F14	RDLC-C777	RDLBL-F14	RDCLCL-C777
<b>1125CR</b>	<b>2009</b>	RDLB-F14	RDLC-C777	RDLBL-F14	RDCLCL-C777
<b>XB12R</b>	<b>2009</b>	RDLB-F14	RDLC-B55	RDLBL-F14	RDCLCL-B55
<b>XB12Ss</b>	<b>2009</b>	RDLB-F14	RDLC-B55	RDLBL-F14	RDCLCL-B55
<b>XB12Scg</b>	<b>2009</b>	RDLB-F14	RDLC-B55	RDLBL-F14	RDCLCL-B55
<b>Ulysses XB12XT</b>	<b>2009</b>	RDLB-F21	RDLC-B55	RDLBL-F21	RDCLCL-B55
<b>Ulysses XB12X</b>	<b>2009</b>	RDLB-F21	RDLC-B55	RDLBL-F21	RDCLCL-B55
<b>XB12 all models up to 08 only</b>	<b>2004-2008</b>	RDLB-F21	RDLC-B55	RDLBL-F21	RDCLCL-B55
<b>XB9 all models</b>	<b>2003-2009</b>	RDLB-F21	RDLC-B55	RDLBL-F21	RDCLCL-B55
<b>X1 Lightning</b>	<b>1998-2002</b>	RDLB-F14	RDLC-B55	RDLBL-F14	RDCLCL-B55
<b>S1 Lightning</b>	<b>1997-1998</b>	RDLB-F14	RDLC-B55	RDLBL-F14	RDCLCL-B55
<b>M2 Cyclone</b>	<b>1997-2002</b>	RDLB-F14	RDLC-B55	RDLBL-F14	RDCLCL-B55
<b>Ducati</b>					
<b>DIAVEL /CARBON</b>	<b>2011-2015</b>	RDLB-F11	RDLC-H11	RDLBL-F11	RDCLCL-H11
<b>899 Panigale</b>	<b>2014-2015</b>	RDLB-F99	RDLC-H11	RDLBL-F99	RDCLCL-H11
<b>1199 PANIGALE/S/Tricolor</b>	<b>2012-2015</b>	RDLB-F99	RDLC-D11	RDLBL-F99	RDCLCL-D11
<b>1299 Panigale/S/R</b>	<b>2015-2016</b>	RDLB-F99	RDLC-H11	RDLBL-F99	RDCLCL-H11
<b>959 Panigale</b>	<b>2016</b>	RDLB-F99	RDLC-H11	RDLBL-F99	RDCLCL-H11
<b>1198/S/R</b>	<b>2009-2011</b>	RDLB-F11	RDLC-H11	RDLBL-F11	RDCLCL-H11
<b>1098/S/Tricolor</b>	<b>2007-2008</b>	RDLB-F11	RDLC-H11	RDLBL-F11	RDCLCL-H11
<b>848 /EVO</b>	<b>2007-2013</b>	RDLB-F11	RDLC-H11	RDLBL-F11	RDCLCL-H11
<b>MULTISTRADA 1200/S</b>	<b>2010-2016</b>	RDLB-F11	RDLC-H11	RDLBL-F11	RDCLCL-H11
<b>STREETFIGHTER /S</b>	<b>2009-2013</b>	RDLB-F11	RDLC-H11	RDLBL-F11	RDCLCL-H11
<b>STREETFIGHTER 848</b>	<b>2012-2015</b>	RDLB-F11	RDLC-H11	RDLBL-F11	RDCLCL-H11
<b>HYPERMOTARD 1100/S/EVO SP</b>	<b>2007-2012 short only</b>	RDLB-D01	RDLC-H11	RDLBL-D01	RDCLCL-H11
<b>HYPERMOTARD 796</b>	<b>2010-2012 short only</b>	RDLB-DB12	RDLC-D22	RDLBL-DB12	RDCLCL-D22
<b>M1100/S/EVO MONSTER</b>	<b>2009-2013</b>	RDLB-F11	RDLC-H11	RDLBL-F11	RDCLCL-H11
<b>999/S/R</b>	<b>2003-2006</b>	RDLB-F11	RDLC-H11	RDLBL-F11	RDCLCL-H11
<b>749/S/R</b>	<b>2003-2006</b>	RDLB-F11	RDLC-H11	RDLBL-F11	RDCLCL-H11
<b>S4RS</b>	<b>2006-2008</b>	RDLB-F11	RDLC-H11	RDLBL-F11	RDCLCL-H11
<b>MS4/MS4R</b>	<b>2001-2006</b>	RDLB-DB80	RDLC-DC80	RDLBL-DB80	RDCLCL-DC80
<b>M900/M1000</b>	<b>2000-2005</b>	RDLB-DB80	RDLC-DC80	RDLBL-DB80	RDCLCL-DC80
<b>900SS/1000SS</b>	<b>1998-2006</b>	RDLB-DB80	RDLC-DC80	RDLBL-DB80	RDCLCL-DC80
<b>996/998/B/S/R</b>	<b>1999-2003</b>	RDLB-DB80	RDLC-DC80	RDLBL-DB80	RDCLCL-DC80
<b>748/750SS</b>	<b>1999-2002</b>	RDLB-DB80	RDLC-DC80	RDLBL-DB80	RDCLCL-DC80
<b>MTS1000SDS/DS</b>	<b>2004-2006</b>	RDLB-DB80	RDLC-DC80	RDLBL-DB80	RDCLCL-DC80
<b>MTS1100/S</b>	<b>2007-2009</b>	RDLB-DB80	RDLC-DC80	RDLBL-DB80	RDCLCL-DC80
<b>ST4/S/ABS</b>	<b>2004-2006</b>	RDLB-DB80	RDLC-DC80	RDLBL-DB80	RDCLCL-DC80
<b>ST3/S/ABS</b>	<b>2003-2007</b>	RDLB-DB80	RDLC-DC80	RDLBL-DB80	RDCLCL-DC80
<b>SPORT 1000</b>	<b>2006-2009</b>	RDLB-DB80	RDLC-DC80	RDLBL-DB80	RDCLCL-DC80
<b>GT 1000</b>	<b>2006-2010</b>	RDLB-DB80	RDLC-DC80	RDLBL-DB80	RDCLCL-DC80

<b>PAUL SMART LE</b>	<b>2006</b>	RDLB-DB80	RDLC-DC80	RDLBL-DB80	RDLC-DC80
<b>S2R 1000</b>	<b>2006-2008</b>	RDLB-DB80	RDLC-DC80	RDLBL-DB80	RDLC-DC80
<b>400 MONSTER</b>	<b>2004-2007</b>	RDLB-DB12	RDLC-D22	RDLBL-DB12	RDLC-D22
<b>620 MONSTER / 620 MTS</b>	<b>2003-2006</b>	RDLB-DB12	RDLC-D22	RDLBL-DB12	RDLC-D22
<b>695 MONSTER</b>	<b>2007-2008</b>	RDLB-DB12	RDLC-D22	RDLBL-DB12	RDLC-D22
<b>696 MONSTER</b>	<b>2009-2014</b>	RDLB-DB12	RDLC-D22	RDLBL-DB12	RDLC-D22
<b>796 MONSTER</b>	<b>2011-2014</b>	RDLB-DB12	RDLC-D22	RDLBL-DB12	RDLC-D22
<b>MONSTER S2R 800</b>	<b>2005-2007</b>	RDLB-DB12	RDLC-D22	RDLBL-DB12	RDLC-D22
<b>MONSTER 1200 / S / R</b>	<b>2014-2016</b>	RDLB-F99	RDLC-H11	RDLBL-F99	RDLC-H11
<b>ST4S</b>	<b>2003</b>	RDLB-DB12	RDLC-D22	RDLBL-DB12	RDLC-D22
<b>748</b>	<b>UP TO 1998</b>	RDLB-DB12	RDLC-DC12	RDLBL-DB12	RDLC-DC12
<b>916/916SPS</b>	<b>UP TO 1998</b>	RDLB-DB12	RDLC-DC12	RDLBL-DB12	RDLC-DC12
<b>900SS</b>	<b>1991-1997</b>	RDLB-DB12	RDLC-DC12	RDLBL-DB12	RDLC-DC12
<b>MONSTER M400</b>	<b>1999-2003</b>	RDLB-DB12	RDLC-DC12	RDLBL-DB12	RDLC-DC12
<b>MONSTER M600</b>	<b>1994-2001</b>	RDLB-DB12	RDLC-DC12	RDLBL-DB12	RDLC-DC12
<b>MONSTER M620</b>	<b>2002</b>	RDLB-DB12	RDLC-DC12	RDLBL-DB12	RDLC-DC12
<b>MONSTER M750/M750IE</b>	<b>1994-2002</b>	RDLB-DB12	RDLC-DC12	RDLBL-DB12	RDLC-DC12
<b>MONSTER M900</b>	<b>1994-1999</b>	RDLB-DB12	RDLC-DC12	RDLBL-DB12	RDLC-DC12
<b>ST2</b>	<b>1998-2003</b>	RDLB-DB12	RDLC-DC12	RDLBL-DB12	RDLC-DC12
<b>ST4/S/ABS</b>	<b>1999-2002</b>	RDLB-DB12	RDLC-DC12	RDLBL-DB12	RDLC-DC12
<b>HYPERMOTARD 821/STRADA</b>	<b>2013-2015</b>	RDLB-D12	RDLC-D82	RDLBL-D12	RDLC-D82
<b>SCRAMBLER</b>	<b>2015-2016</b>	RDLB-D12	RDLC-D82	RDLBL-D12	RDLC-D82
<b>HYPERMOTARD 939/Strada</b>	<b>2016</b>	RDLB-D12	RDLC-D82	RDLBL-D12	RDLC-D82
<b>HYPERMOTARD 939 SP</b>	<b>2016</b>	RDLB-D01	RDLC-D82	RDLBL-D01	RDLC-D82
<b>HYPERMOTARD 821 SP</b>	<b>2013-2015</b>	RDLB-D01	RDLC-D82	RDLBL-D01	RDLC-D82
<b>821 MONSTER /Dark/Stripe</b>	<b>2014-2016</b>	RDLB-D12	RDLC-D82	RDLBL-D12	RDLC-D82
<b>Honda</b>					
<b>MSX125/GROOM</b>	<b>2014-2016</b>	RDLB-F25	RDLC-H250	RDLBL-F25	RDLC-H250
<b>CBR500R/CB500F/X</b>	<b>2013-2015</b>	RDLB-F25	RDLC-H626	RDLBL-F25	RDLC-H626
<b>CBR300R/CB300F/FA</b>	<b>2014-2016</b>	RDLB-F25	RDLC-H626	RDLBL-F25	RDLC-H626
<b>CB599 / CB600 HORNET</b>	<b>1998-2006</b>	RDLB-F18	RDLC-H626	RDLBL-F18	RDLC-H626
<b>CB600F Hornet</b>	<b>2007-2013</b>	RDLB-F18	RDLC-H607	RDLBL-F18	RDLC-H607
<b>CBR600F</b>	<b>2011-2013</b>	RDLB-F18	RDLC-H607	RDLBL-F18	RDLC-H607
<b>CBR650F/CB650F</b>	<b>2014-2016</b>	RDLB-F18	RDLC-H65	RDLBL-F18	RDLC-H65
<b>CB919/900</b>	<b>2002-2007</b>	RDLB-F18	RDLC-H626	RDLBL-F18	RDLC-H626
<b>CBR 600 F2,F3,F4,F4i</b>	<b>1991-2007</b>	RDLB-F18	RDLC-H626	RDLBL-F18	RDLC-H626
<b>CBR600RR</b>	<b>2003-2006</b>	RDLB-F29	RDLC-Y688H	RDLBL-F29	RDLC-Y688H
<b>CBR600RR</b>	<b>2007-2016</b>	RDLB-F33	RDLC-Y688H	RDLBL-F33	RDLC-Y688H
<b>CB1000R</b>	<b>2008-2016</b>	RDLB-F33	RDLC-H33	RDLBL-F33	RDLC-H33
<b>CBR900RR</b>	<b>1993-1999</b>	RDLB-F18	RDLC-H626	RDLBL-F18	RDLC-H626
<b>CBR929RR</b>	<b>2000-2001</b>	RDLB-F29	RDLC-H626	RDLBL-F29	RDLC-H626
<b>CBR954RR</b>	<b>2002-2003</b>	RDLB-F29	RDLC-Y688H	RDLBL-F29	RDLC-Y688H
<b>CBR1000RR / FIREBLADE</b>	<b>2004-2007</b>	RDLB-F33	RDLC-H33	RDLBL-F33	RDLC-H33
<b>CBR1000RR / FIREBLADE</b>	<b>2008-2016</b>	RDLB-F33	RDLC-Y688H	RDLBL-F33	RDLC-Y688H
<b>RC51 / RVT1000 SP-1/SP-2</b>	<b>2000-2006</b>	RDLB-F29	RDLC-H33	RDLBL-F29	RDLC-H33
<b>VF750S SABRE</b>	<b>1982-1986</b>	RDLB-F18	RDLC-V00	RDLBL-F18	RDLC-V00
<b>VFR750</b>	<b>1991-1997</b>	RDLB-F18	RDLC-V00	RDLBL-F18	RDLC-V00



VFR800	1998-2001	RDLB-FXX	RDLC-V00	RDLBL-FXX	RDLCCL-V00
VFR800	2002-2016	RDLB-F18	RDLC-V00	RDLBL-F18	RDLCCL-V00
VTR1000F / FIRESTORM	1998-2005	RDLB-F18	RDLC-V00	RDLBL-F18	RDLCCL-V00
CBF1000	2006-2009	RDLB-F18	RDLC-V00	RDLBL-F18	RDLCCL-V00
CBR1100XX / BLACKBIRD	1997-2007	RDLB-FXX	RDLC-V00	RDLBL-FXX	RDLCCL-V00
ST1300/ST1300A	2003-2007	RDLB-FXX	RDLC-V00	RDLBL-FXX	RDLCCL-V00
VTX1300	2003-2008	RDLB-F18	RDLC-H626	RDLBL-F18	RDLCCL-H626
X-11	1999-2002	RDLB-FXX	RDLC-H626	RDLBL-FXX	RDLCCL-H626
NC700 S/X	2012-2013	RDLB-F18	RDLC-H626	RDLBL-F18	RDLCCL-H626
NC750 S/X	2014-2015	RDLB-F18	-	RDLBL-F18	-
CBR250R	2011-2013	RDLB-F25	RDLC-H626	RDLBL-F25	RDLCCL-H626
CBF600/SA	2010-2013	RDLB-F18	RDLC-H607	RDLBL-F18	RDLCCL-H607
CBF1000/A	2010-2013	RDLB-F18	RDLC-H33	RDLBL-F18	RDLCCL-H33
VFR 1200/F	2010-2016	RDLB-F12	RDLC-H33	RDLBL-F12	RDLCCL-H33
CB1100/GIO spec.	2013-2015	RDLB-F18	RDLC-H33	RDLBL-F18	RDLCCL-H33
Black Spirit	2014-2016	RDLB-F18	RDLC-H626	RDLBL-F18	RDLCCL-H626
ST 1300	2008-2012	RDLB-F12	RDLC-V00	RDLBL-F12	RDLCCL-V00
PCX 125		RDLB-XDB1	RDLC-XHB5	RDLBL-XDB1	RDLCCL-XHB5
INTERGRA		RDLB-H27	RDLC-H17	RDLBL-H27	RDLCCL-H17

## Kawasaki

ZX-6	1990-1999	RDLB-F14	RDLC-K750	RDLBL-F14	RDLCCL-K750
ZZR600	1990-2004	RDLB-F14	RDLC-K750	RDLBL-F14	RDLCCL-K750
ZZR600	2005-2009	RDLB-F14	RDLC-K828	RDLBL-F14	RDLCCL-K828
ZX6R / ZX636R / ZX6RR	2000-2004	RDLB-F14	RDLC-K828	RDLBL-F14	RDLCCL-K828
ZX636R / ZX6RR	2005-2006	RDLB-F35	RDLC-K828	RDLBL-F35	RDLCCL-K828
ZX6R/636	2007-2016	RDLB-F88	RDLC-K828	RDLBL-F88	RDLCCL-K828
ZX7R / ZX7RR	1989-2003	RDLB-F14	RDLC-C777	RDLBL-F14	RDLCCL-C777
ZR750 ZEPHYR	1991-1993	RDLB-F14	RDLC-K750	RDLBL-F14	RDLCCL-K750
ZX9	1994-1997	RDLB-F14	RDLC-C777	RDLBL-F14	RDLCCL-C777
ZX9R	1998-1999	RDLB-F14	RDLC-K750	RDLBL-F14	RDLCCL-K750
ZX9R	2000-2003	RDLB-F14	RDLC-K828	RDLBL-F14	RDLCCL-K828
ZX10R	2004-2005	RDLB-F14	RDLC-K828	RDLBL-F14	RDLCCL-K828
ZX10R	2006-2015	RDLB-F88	RDLC-K828	RDLBL-F88	RDLCCL-K828
ZX10R	2016	RDLB-F99	RDLC-HL15	RDLBL-F99	RDLCCL-HL15
Z750 (not Z750S model)	2007-2012	RDLB-F21	RDLC-K828	RDLBL-F21	RDLCCL-K828
Z750R	2011-2012	RDLB-F88	RDLC-K828	RDLBL-F88	RDLCCL-K828
Z800/E version	2013-2016	RDLB-F21	RDLC-K828	RDLBL-F21	RDLCCL-K828
Z1000	2003-2006	RDLB-F14	RDLC-K828	RDLBL-F14	RDLCCL-K828
Z1000	2007-2016	RDLB-F88	RDLC-K828	RDLBL-F88	RDLCCL-K828
Z1000SX/NINJA 1000/Tourer	2011-2016	RDLB-F88	RDLC-K828	RDLBL-F88	RDLCCL-K828
ZX1100 / ZX-11	1990-2001	RDLB-F14	RDLC-C777	RDLBL-F14	RDLCCL-C777
ZRX1100 / 1200	1999-2007	RDLB-F14	RDLC-C777	RDLBL-F14	RDLCCL-C777
ZX12R	2000-2005	RDLB-F14	RDLC-K828	RDLBL-F14	RDLCCL-K828
ZZR1200	2002-2005	RDLB-F14	RDLC-C777	RDLBL-F14	RDLCCL-C777
ZG1000 CONCOURS	1992-2006	RDLB-F14	RDLC-C777	RDLBL-F14	RDLCCL-C777
ZX1400 / ZX14R / ZZR1400	2006-2016	RDLB-F88	RDLC-H88	RDLBL-F88	RDLCCL-H88
ZZR/ZX1400 S Version	2016	RDLB-F99	RDLC-H88	RDLBL-F99	RDLCCL-H88

<b>GTR1400 / CONCOURS</b>	<b>2007-2016</b>	RDLB-F88	RDLC-H88	RDLBL-F88	RDCLL-H88
<b>ZXR400</b>	<b>all years</b>	RDLB-F14	RDLC-K750	RDLBL-F14	RDCLL-K750
<b>GPZ500S/EX500R NINJA</b>	<b>1990-2009</b>	RDLB-F14	RDLC-K750	RDLBL-F14	RDCLL-K750
<b>ER-5</b>	<b>2004-2005</b>	RDLB-F14	RDLC-K750	RDLBL-F14	RDCLL-K750
<b>NINJA 650R (ER-6f / ER-6n)</b>	<b>2006-2008</b>	RDLB-F14	RDLC-K750	RDLBL-F14	RDCLL-K750
<b>VERSYS 650</b>	<b>2006-2008</b>	RDLB-F14	RDLC-K750	RDLBL-F14	RDCLL-K750
<b>Z750S (not Z750 model)</b>	<b>2006-2008</b>	RDLB-F14	RDLC-K750	RDLBL-F14	RDCLL-K750
<b>NINJA 650R (ER-6f / ER-6n)</b>	<b>2009-2016</b>	RDLB-F44	RDLC-K750	RDLBL-F44	RDCLL-K750
<b>ER-6N/F</b>	<b>2009-2015</b>	RDLB-F44	RDLC-K750	RDLBL-F44	RDCLL-K750
<b>Versys 650 cc</b>	<b>2009-2014</b>	RDLB-F44	RDLC-K750	RDLBL-F44	RDCLL-K750
<b>VERSYS 1000</b>	<b>2012-2014</b>	RDLB-F14	RDLC-K828	RDLBL-F14	RDCLL-K828
<b>VERSYS 1000</b>	<b>2015-2016</b>	RDLB-F21	RDLC-K750	RDLBL-F21	RDCLL-K750
<b>VERSYS 650 cc</b>	<b>2015-2016</b>	RDLB-F21	RDLC-K750	RDLBL-F21	RDCLL-K750
<b>VULCAN/S 650cc</b>	<b>2015-2016</b>	RDLB-F21	RDLC-K750	RDLBL-F21	RDCLL-K750
<b>NINJA 250R</b>	<b>2008-2012</b>	RDLB-F25	RDLC-K25	RDLBL-F25	RDCLL-K25
<b>NINJA 300R</b>	<b>2013-2016</b>	RDLB-F25	RDLC-K25	RDLBL-F25	RDCLL-K25
<b>NINJA 400R</b>	<b>2011</b>	RDLB-F44	RDLC-K750	RDLBL-F44	RDCLL-K750
<b>H2 / H2R</b>	<b>2015-2016</b>	RDLB-F99	RDLC-H11	RDLBL-F99	RDCLL-H11
<b>W800/SE</b>	<b>2012 -2016</b>	RDLB-F14	RDLC-K750	RDLBL-F14	RDCLL-K750

## KTM

<b>990 SuperDuke</b>	<b>2005-2012</b>	RDLB-F11	RDLC-M11	RDLBL-F11	RDCLL-M11
<b>990 SMR/SMT</b>	<b>2009-2013</b>	RDLB-D01	RDLC-M69	RDLBL-D01	RDCLL-M69
<b>RC8 / R</b>	<b>2009-2016</b>	RDLB-F11	RDLC-M11	RDLBL-F11	RDCLL-M11
<b>690 Duke</b>	<b>2008-2011</b>	RDLB-F11	RDLC-M11	RDLBL-F11	RDCLL-M11
<b>690 Duke R</b>	<b>2014-2016</b>	RDLB-F11	RDLC-HL03	RDLBL-F11	RDCLL-HL03
<b>690 Enduro R</b>	<b>2014-2016</b>	RDLB-DB12	RDLC-HL03	RDLBL-DB12	RDCLL-HL03
<b>690 SMC/SMC-R/Duke/DukeR</b>	<b>2012-2013</b>	RDLB-DB12	RDLC-M69	RDLBL-DB12	RDCLL-M69
<b>690 Duke/SMC/SMC-R</b>	<b>2014-2016</b>	RDLB-DB12	RDLC-HL03	RDLBL-DB12	RDCLL-HL03
<b>390 Duke/RC390</b>	<b>2014-2016</b>	RDLB-HR02	RDLC-HL02	RDLBL-HR02	RDCLL-HL02
<b>200 Duke/RC 200</b>	<b>2014-2016</b>	RDLB-HR02	RDLC-HL02	RDLBL-HR02	RDCLL-HL02
<b>125 Duke/RC 125</b>	<b>2014-2016</b>	RDLB-HR02	RDLC-HL02	RDLBL-HR02	RDCLL-HL02
<b>1190 Adventure</b>	<b>2013-2016</b>	RDLB-D01	RDLC-HL03	RDLBL-D01	RDCLL-HL03
<b>1290 Super Duke R</b>	<b>2014-2016</b>	RDLB-F11	RDLC-M11	RDLBL-F11	RDCLL-M11
<b>ADVENTURE 1050</b>	<b>2016</b>	RDLB-DB12	RDLC-HL03	RDLBL-DB12	RDCLL-HL03
<b>Super Adventure 1290</b>	<b>2015-2016</b>	RDLB-D01	RDLC-HL03	RDLBL-D01	RDCLL-HL03

## Moto-Guzzi

<b>GRISO</b>	<b>2006-2015</b>	RDLB-F16	RDLC-DC80	RDLBL-F16	RDCLL-DC80
<b>BREVA 1100</b>	<b>2006-2012</b>	RDLB-F16	RDLC-DC80	RDLBL-F16	RDCLL-DC80
<b>NORGE 1200/GT8V</b>	<b>2006-2015</b>	RDLB-F16	RDLC-DC80	RDLBL-F16	RDCLL-DC80
<b>1200 SPORT</b>	<b>2007-2013</b>	RDLB-F16	RDLC-DC80	RDLBL-F16	RDCLL-DC80
<b>STELVIO</b>	<b>2008-2015</b>	RDLB-F16	RDLC-DC80	RDLBL-F16	RDCLL-DC80
<b>V7 Classic/Racer/Stone/Special</b>	<b>2008-2016</b>	RDLB-F16	RDLC-D37	RDLBL-F16	RDCLL-D37
<b>California Custom/Touring</b>	<b>2014-2015</b>	RDLB-F23	RDLC-C23	RDLBL-F23	RDCLL-C23
<b>Eldorado</b>	<b>2015-2016</b>	RDLB-F23	RDLC-C23	RDLBL-F23	RDCLL-C23
<b>Breva 750</b>	<b>2004-2009</b>	RDLB-F16	RDLC-D37	RDLBL-F16	RDCLL-D37
<b>Breva 750</b>	<b>2014-2015</b>	RDLB-F16	RDLC-D37	RDLBL-F16	RDCLL-D37



<b>MGX21</b>	<b>2016</b>	RDLB-F23	RDLC-C23	RDLBL-F23	RDLC-L-C23
<b>V9 Bobber/Roamer</b>	<b>2016</b>	RDLB-F16	RDLC-D37	RDLBL-F16	RDLC-L-D37
<b>Audace</b>	<b>2015-2016</b>	RDLB-F23	RDLC-C23	RDLBL-F23	RDLC-L-C23
<b>Suzuki</b>					
<b>GSXR600</b>	<b>1997-2003</b>	RDLB-F14	RDLC-S248	RDLBL-F14	RDLC-L-S248
<b>GSXR750</b>	<b>1996-2003</b>	RDLB-F14	RDLC-S248	RDLBL-F14	RDLC-L-S248
<b>GSXR1000</b>	<b>2001-2004</b>	RDLB-F14	RDLC-S248	RDLBL-F14	RDLC-L-S248
<b>GSXR600</b>	<b>2004-2005</b>	RDLB-F35	RDLC-S248	RDLBL-F35	RDLC-L-S248
<b>GSXR750</b>	<b>2004-2005</b>	RDLB-F35	RDLC-S248	RDLBL-F35	RDLC-L-S248
<b>GSXR1000</b>	<b>2005-2006</b>	RDLB-F35	RDLC-S35	RDLBL-F35	RDLC-L-S35
<b>GSXR600</b>	<b>2006-2010</b>	RDLB-F35	RDLC-S35	RDLBL-F35	RDLC-L-S35
<b>GSXR750</b>	<b>2006-2010</b>	RDLB-F35	RDLC-S35	RDLBL-F35	RDLC-L-S35
<b>GSXR1000</b>	<b>2007-2008</b>	RDLB-F35	RDLC-S14	RDLBL-F35	RDLC-L-S14
<b>GSXR1000</b>	<b>2009-2016</b>	RDLB-F35	RDLC-V4	RDLBL-F35	RDLC-L-V4
<b>GSXR600</b>	<b>2011-2016</b>	RDLB-F35	RDLC-V4	RDLBL-F35	RDLC-L-V4
<b>GSXR750</b>	<b>2011-2016</b>	RDLB-F35	RDLC-V4	RDLBL-F35	RDLC-L-V4
<b>TL1000S</b>	<b>1997-2001</b>	RDLB-F14	RDLC-S248	RDLBL-F14	RDLC-L-S248
<b>TL1000R</b>	<b>1998-2003</b>	RDLB-F14	RDLC-S14	RDLBL-F14	RDLC-L-S14
<b>SV1000/S</b>	<b>2003-2007</b>	RDLB-F14	RDLC-S14	RDLBL-F14	RDLC-L-S14
<b>HAYABUSA/GSXR1300</b>	<b>1999-2007</b>	RDLB-F14	RDLC-S14	RDLBL-F14	RDLC-L-S14
<b>HAYABUSA/GSXR1300</b>	<b>2008-2016</b>	RDLB-F41	RDLC-S14	RDLBL-F41	RDLC-L-S14
<b>B-KING</b>	<b>2008-2011</b>	RDLB-F35	RDLC-S31	RDLBL-F35	RDLC-L-S31
<b>GSF1200 BANDIT</b>	<b>2001-2006</b>	RDLB-F14	RDLC-S14	RDLBL-F14	RDLC-L-S14
<b>GSF1250 BANDIT</b>	<b>2007-2015</b>	RDLB-F14	RDLC-S14	RDLBL-F14	RDLC-L-S14
<b>DL1000/V-STROM</b>	<b>2002-2016</b>	RDLB-F14	RDLC-S14	RDLBL-F14	RDLC-L-S14
<b>GSX1400</b>	<b>2001-2007</b>	RDLB-F14	RDLC-S14	RDLBL-F14	RDLC-L-S14
<b>GSF650 BANDIT</b>	<b>2007</b>	RDLB-F14	RDLC-S14	RDLBL-F14	RDLC-L-S14
<b>SV650/S</b>	<b>1999-2009</b>	RDLB-F14	RDLC-S650	RDLBL-F14	RDLC-L-S650
<b>DL650/V-STROM</b>	<b>2004-2010</b>	RDLB-F14	RDLC-S650	RDLBL-F14	RDLC-L-S650
<b>DL650/V-STROM</b>	<b>2011-2012</b>	RDLB-F14	RDLC-S248	RDLBL-F14	RDLC-L-S248
<b>600/750 KATANA</b>	<b>1998-2006</b>	RDLB-F14	RDLC-S650	RDLBL-F14	RDLC-L-S650
<b>GSR600</b>	<b>2006-2011</b>	RDLB-F14	RDLC-S248	RDLBL-F14	RDLC-L-S248
<b>GSR750/GSX-S750</b>	<b>2011-2016</b>	RDLB-F14	RDLC-S248	RDLBL-F14	RDLC-L-S248
<b>GSX650F</b>	<b>2008-2015</b>	RDLB-F14	RDLC-S14	RDLBL-F14	RDLC-L-S14
<b>GSX1250 F/SA/ABS</b>	<b>2010-2016</b>	RDLB-F14	RDLC-S14	RDLBL-F14	RDLC-L-S14
<b>SFV650 GLADIUS</b>	<b>2009-2015</b>	RDLB-F14	RDLC-S248	RDLBL-F14	RDLC-L-S248
<b>Bandit 650S</b>	<b>2015</b>	RDLB-F14	RDLC-S14	RDLBL-F14	RDLC-L-S14
<b>GSX-S1000/F/ABS</b>	<b>2015</b>	RDLB-F35	RDLC-V4	RDLBL-F35	RDLC-L-V4
<b>Triumph</b>					
<b>DAYTONA 955i</b>	<b>1997-2003</b>	RDLB-F14	RDLC-T955	RDLBL-F14	RDLC-L-T955
<b>SPEED TRIPLE</b>	<b>1997-2003</b>	RDLB-F14	RDLC-T955	RDLBL-F14	RDLC-L-T955
<b>SRINT ST</b>	<b>1997-2003</b>	RDLB-F14	RDLC-T955	RDLBL-F14	RDLC-L-T955
<b>SPRINT RS</b>	<b>1999-2003</b>	RDLB-F14	RDLC-T955	RDLBL-F14	RDLC-L-T955
<b>TT 600</b>	<b>2000-2003</b>	RDLB-F14	RDLC-T955	RDLBL-F14	RDLC-L-T955
<b>SPEED FOUR</b>	<b>2003-2004</b>	RDLB-F14	RDLC-T955	RDLBL-F14	RDLC-L-T955
<b>SPEED FOUR</b>	<b>2005-2006</b>	RDLB-F14	RDLC-T333	RDLBL-F14	RDLC-L-T333

<b>SPEED TRIPLE</b>	<b>2004-2007</b>	RDLB-F14	RDLC-T333	RDLBL-F14	RDCLCL-T333
<b>SPEED TRIPLE</b>	<b>2008-2010</b>	RDLB-F35	RDLC-T333	RDLBL-F35	RDCLCL-T333
<b>SPEED TRIPLE 1050</b>	<b>2011-2015</b>	RDLB-F11	RDLC-T333	RDLBL-F11	RDCLCL-T333
<b>SPEED TRIPLE 1050/S</b>	<b>2016</b>	RDLB-F11	RDLC-T333P	RDLBL-F11	RDCLCL-T333P
<b>SPEED TRIPLE R</b>	<b>2012-2015</b>	RDLB-F11	RDLC-T333	RDLBL-F11	RDCLCL-T333
<b>DAYTONA 600/650</b>	<b>2004-2005</b>	RDLB-F14	RDLC-T333	RDLBL-F14	RDCLCL-T333
<b>DAYTONA 955i</b>	<b>2004-2006</b>	RDLB-F14	RDLC-T333	RDLBL-F14	RDCLCL-T333
<b>SPRINT ST/RS</b>	<b>2004-2009</b>	RDLB-F14	RDLC-T333	RDLBL-F14	RDCLCL-T333
<b>SPRINT GT</b>	<b>2011-2015</b>	RDLB-F14	RDLC-T333	RDLBL-F14	RDCLCL-T333
<b>THRUXTON</b>	<b>2004-2015</b>	RDLB-F14	RDLC-T333	RDLBL-F14	RDCLCL-T333
<b>THRUXTON STEVE McQUEEN SE</b>	<b>2012</b>	RDLB-F14	RDLC-T333	RDLBL-F14	RDCLCL-T333
<b>BONNEVILLE T120</b>	<b>2016</b>	RDLB-F14	RDLC-T333P	RDLBL-F14	RDCLCL-T333P
<b>BONNEVILLE /SE/T100</b>	<b>2006-2015</b>	RDLB-F14	RDLC-T333	RDLBL-F14	RDCLCL-T333
<b>TIGER 1050 / Sport</b>	<b>2007-2015</b>	RDLB-F14	RDLC-T333	RDLBL-F14	RDCLCL-T333
<b>TIGER 800/XC</b>	<b>2011-2014</b>	RDLB-F14	RDLC-T333	RDLBL-F14	RDCLCL-T333
<b>TIGER 800 all models</b>	<b>2015-2016</b>	RDLB-F14	RDLC-T333P	RDLBL-F14	RDCLCL-T333P
<b>THRUXTON</b>	<b>2016</b>	RDLB-F14	RDLC-T333P	RDLBL-F14	RDCLCL-T333P
<b>THRUXTON R</b>	<b>2016</b>	RDLB-F11	RDLC-T333P	RDLBL-F14	RDCLCL-T333P
<b>ROCKET III</b>	<b>2004-2007</b>	RDLB-F14	RDLC-T333	RDLBL-F14	RDCLCL-T333
<b>ROCKET III CLASSIC</b>	<b>2007-2010</b>	RDLB-F14	RDLC-T333	RDLBL-F14	RDCLCL-T333
<b>ROCKET III ROADSTER</b>	<b>2010-2015</b>	RDLB-F14	RDLC-T333	RDLBL-F14	RDCLCL-T333
<b>SCRAMBLER</b>	<b>2006-2015</b>	RDLB-F14	RDLC-T333	RDLBL-F14	RDCLCL-T333
<b>675 STREET TRIPLE</b>	<b>2008-2015</b>	RDLB-F14	RDLC-T333	RDLBL-F14	RDCLCL-T333
<b>675 STREET TRIPLE R / RX</b>	<b>2009-2016</b>	RDLB-F35	RDLC-T333	RDLBL-F35	RDCLCL-T333
<b>DAYTONA 675</b>	<b>2006-2015</b>	RDLB-F35	RDLC-T333	RDLBL-F35	RDCLCL-T333
<b>DAYTONA 675 R</b>	<b>2011-2016</b>	RDLB-F11	RDLC-T333	RDLBL-F11	RDCLCL-T333
<b>SPEEDMASTER</b>	<b>2006-2016</b>	RDLB-F14	RDLC-T333	RDLBL-F14	RDCLCL-T333
<b>AMERICA/LT</b>	<b>2006-2016</b>	RDLB-F14	RDLC-T333	RDLBL-F14	RDCLCL-T333
<b>Trophy/SE</b>	<b>2013-2015</b>	RDLB-F14	RDLC-C777	RDLBL-F14	RDCLCL-C777
<b>STREET TWIN</b>	<b>2016</b>	RDLB-F14	RDLC-T333P	RDLBL-F14	RDCLCL-T333P
<b>TIGER 1200 EXPLORER</b>	<b>2012-2016</b>	RDLB-F14	RDLC-C777	RDLBL-F14	RDCLCL-C777

## Yamaha

<b>YZF R6</b>	<b>1999-2004</b>	RDLB-F14	RDLC-Y688Y	RDLBL-F14	RDCLCL-Y688Y
<b>YZF R6</b>	<b>2005-2016</b>	RDLB-R104	RDLC-Y688Y	RDLBL-R104	RDCLCL-Y688Y
<b>YZF R1</b>	<b>1999-2001</b>	RDLB-F21	RDLC-Y688Y	RDLBL-F21	RDCLCL-Y688Y
<b>YZF R1</b>	<b>2002-2003</b>	RDLB-F14	RDLC-Y688Y	RDLBL-F14	RDCLCL-Y688Y
<b>YZF R1</b>	<b>2004-2008</b>	RDLB-R104	RDLC-Y688Y	RDLBL-R104	RDCLCL-Y688Y
<b>YZF R1</b>	<b>2009-2014</b>	RDLB-R19	RDLC-Y688Y	RDLBL-R19	RDCLCL-Y688Y
<b>YZF R1/R1M</b>	<b>2015-2016</b>	RDLB-HR06	RDLC-Y688Y	RDLBL-HR06	RDCLCL-Y688Y
<b>YZF R 125</b>	<b>2014-2015</b>	RDLB-HR04	RDLC-HL04	RDLBL-HR04	RDCLCL-HL04
<b>MT 125</b>	<b>2014-2015</b>	RDLB-HR04	RDLC-HL04	RDLBL-HR04	RDCLCL-HL04
<b>YZF R25</b>	<b>2014-2015</b>	RDLB-HR05	RDLC-HL05	RDLBL-HR05	RDCLCL-HL05
<b>YZF R3</b>	<b>2014-2015</b>	RDLB-HR05	RDLC-HL05	RDLBL-HR05	RDCLCL-HL05
<b>FZ6 FAZER</b>	<b>2004-2010</b>	RDLB-F16	RDLC-Y688Y	RDLBL-F16	RDCLCL-Y688Y
<b>FZ6R</b>	<b>2009-2015</b>	RDLB-F16	RDLC-Y688Y	RDLBL-F16	RDCLCL-Y688Y
<b>FZ8</b>	<b>2011-2015</b>	RDLB-F16	RDLC-Y688Y	RDLBL-F16	RDCLCL-Y688Y
<b>FZ1 FAZER</b>	<b>2001-2005</b>	RDLB-F14	RDLC-Y688Y	RDLBL-F14	RDCLCL-Y688Y

<b>FZ1 FAZER</b>	<b>2006-2013</b>	RDLB-F16	RDLC-Y688Y	RDLBL-F16	RDCLL-Y688Y
<b>FJR 1300</b>	<b>2003</b>	RDLB-F14	RDLC-C777	RDLBL-F14	RDCLL-C777
<b>FJR 1300</b>	<b>2004-2016</b>	RDLB-F16	RDLC-C777	RDLBL-F16	RDCLL-C777
<b>XJ6 DIVERSION</b>	<b>2009-2015</b>	RDLB-F16	RDLC-Y688Y	RDLBL-F16	RDCLL-Y688
<b>XJR 1300/ Racer</b>	<b>2004-2016</b>	RDLB-F16	RDLC-C777	RDLBL-F16	RDCLL-C777
<b>MT-01</b>	<b>2004-2009</b>	RDLB-R104	RDLC-C777	RDLBL-R104	RDCLL-C777
<b>R6S USA VERSION</b>	<b>2006-2009</b>	RDLB-F14	RDLC-Y688	RDLBL-F14	RDCLL-Y688
<b>R6S CANADA VERSION</b>	<b>2006</b>	RDLB-R104	RDLC-Y688Y	RDLBL-R104	RDCLL-Y688
<b>R6S CANADA VERSION</b>	<b>2007-2009</b>	RDLB-F14	RDLC-Y688Y	RDLBL-F14	RDCLL-Y688
<b>R6S EUROPE VERSION</b>	<b>2006-2007</b>	RDLB-R104	RDLC-Y688Y	RDLBL-R104	RDCLL-Y688
<b>V-MAX</b>	<b>2009-2016</b>	RDLB-R104	RDLC-C777	RDLBL-R104	RDCLL-C777
<b>SUPERTENERE/XT 1200ZE</b>	<b>2012-2016</b>	RDLB-F16	RDLC-C777	RDLBL-F16	RDCLL-C777
<b>TMAX 500</b>	<b>2008-2011</b>	RDLB-L43	RDLC-R34	RDLBL-L43	RDCLL-R34
<b>TMAX530</b>	<b>2012-2014</b>	RDLB-L43	RDLC-R34	RDLBL-L43	RDCLL-R34
<b>TMAX 500</b>	<b>2001-2007</b>	RDLB-L68	RDLC-R58	RDLBL-L68	RDCLL-R58
<b>MT-07/FZ-7</b>	<b>2014-2016</b>	RDLB-F16	RDLC-Y688Y	RDLBL-F16	RDCLL-Y688Y
<b>TDM900</b>	<b>2012-2014</b>	RDLB-F16	RDLC-Y695	RDLBL-F16	RDCLL-Y695
<b>MT-10</b>	<b>2016</b>	RDLB-F16	RDLC-V4	RDLBL-F16	RDCLL-V4
<b>XSR 700 ABS</b>	<b>2016</b>	RDLB-F16	RDLC-Y688Y	RDLBL-F16	RDCLL-Y688Y
<b>XSR 900 ABS</b>	<b>2016</b>	RDLB-F16	RDLC-Y688Y	RDLBL-F16	RDCLL-Y688Y
<b>XV 950 Racer</b>	<b>2016</b>	RDLB-F16	RDLC-Y688Y	RDLBL-F16	RDCLL-Y688Y
<b>FJ-09/MT-09 Tracer</b>	<b>2015-2016</b>	RDLB-F16	RDLC-V4	RDLBL-F16	RDCLL-V4
<b>FZ-09/MT-09/SR (Not FJ-09)</b>	<b>2014-2016</b>	RDLB-F16	RDLC-Y688Y	RDLBL-F16	RDCLL-Y688Y

## MV AUGUSTA

<b>BRUTALE 750</b>	<b>2003-2005</b>	RDLB-R30	RDLC-L40	RDLBL-R30	RDCLL-L40
<b>Brutale 675</b>	<b>2014-2015</b>	RDLB-R30	RDLC-HLCH	RDLBL-R30	RDCLL-HLCH
<b>Brutale 800/RR</b>	<b>2014-2015</b>	RDLB-R30	RDLC-HLCH	RDLBL-R30	RDCLL-HLCH
<b>Rivale 800</b>	<b>2014-2015</b>	RDLB-R30	RDLC-HLCH	RDLBL-R30	RDCLL-HLCH
<b>Dragster 800/RR</b>	<b>2014-2015</b>	RDLB-R30	RDLC-HLCH	RDLBL-R30	RDCLL-HLCH
<b>Turismo Veloce 800</b>	<b>2014-2015</b>	RDLB-R30	RDLC-HLCH	RDLBL-R30	RDCLL-HLCH
<b>BRUTALE 910</b>	<b>2005-2008</b>	RDLB-R30	RDLC-L40	RDLBL-R30	RDCLL-L40
<b>BRUTALE 989 R</b>	<b>2008-2009</b>	RDLB-R30	RDLC-L40	RDLBL-R30	RDCLL-L40
<b>F3 675</b>	<b>2013-2015</b>	RDLB-F35	RDLC-HLCH	RDLBL-F35	RDCLL-HLCH
<b>BRUTALE 1078 RR</b>	<b>2008-2009</b>	RDLB-R30	RDLC-L40	RDLBL-R30	RDCLL-L40
<b>F4 750</b>	<b>1999-2003</b>	RDLB-R30	RDLC-L40	RDLBL-R30	RDCLL-L40
<b>F4 1000</b>	<b>2004-2007</b>	RDLB-R30	RDLC-L40	RDLBL-R30	RDCLL-L40
<b>F4 312 R (1000)</b>	<b>2007-2009</b>	RDLB-R30	RDLC-L40	RDLBL-R30	RDCLL-L40
<b>F4 312 RR (1078)</b>	<b>2007-2009</b>	RDLB-R30	RDLC-L40	RDLBL-R30	RDCLL-L40
<b>F3 800/AGO/RC/AMG</b>	<b>2014-2016</b>	RDLB-F35	RDLC-HLCH	RDLBL-F35	RDCLL-HLCH
<b>F3 675</b>	<b>2013-2016</b>	RDLB-F35	RDLC-HLCH	RDLBL-F35	RDCLL-HLCH
<b>F4 RR/F4 RC</b>	<b>2011-2016</b>	RDLB-F11	RDLC-H11	RDLBL-F11	RDCLL-H11

## Hyosung

<b>GT250/R</b>	<b>ALL</b>	RDLB-F8	RDLC-H8	RDLBL-F8	RDCLL-H8
<b>GT650R/S</b>	<b>ALL</b>	RDLB-F8	RDLC-H8	RDLBL-F8	RDCLL-H8



# CRASH PROTECTORS AND SLIDERS

	Year	PH01 white or black	PHV1 white or black	PHV2 white or black	SL01 white or black	DIAMOND
<b>Aprilia</b>						
RS125	2005-2010	A8-PH01	A8-PHV1	A8-PHV2		
RS4 125	2011-	A9-PH01	A9-PHV1	A9-PHV2	A9S-SL01	A9SD-SLD
RS125	2017-	A13-PH01	A13-PHV1	A13-PHV2	A13S-SL01	A13SD-SLD
Tuono 125	2017-	A12-PH01	A12-PHV1	A12-PHV2	A12S-SL01	A12SD-SLD
RSV1000Mille	2001-2003	A1-PH01	A1-PHV1	A1-PHV2		
RSV1000Mille	2004-2007	A4-PH01	A4-PHV1	A4-PHV2		
Tuono	2002-2005	A2-PH01	A2-PHV1	A2-PHV2	A2S-SL01	
Tuono	2006-2010	A3-PH01	A3-PHV1	A3-PHV2	A3S-SL01	
SL 750 Shiver	2008-	A5-PH01	A5-PHV1	A5-PHV2	A5S-SL01	A5SD-SLD
SMV 750 Dorsoduro	2008-	A5-PH01	A5-PHV1	A5-PHV2	A5S-SL01	A5SD-SLD
NA 850 Mana		A7-PH01	A7-PHV1	A7-PHV2		
RSV-4/RR/RF	2009-	A6-PH01	A6-PHV1	A6-PHV2	A6S-SL01	A6SD-SLD
V4 Tuono	2011-	A10-PH01	A10-PHV1	A10-PHV2	A10S-SL01	A10SD-SLD
Dorsoduro 1200	2011-	A5-PH01	A5-PHV1	A5-PHV2	A5S-SL01	A5SD-SLD
Caponord 1200	2013-	A11-PH01	A11-PHV1	A11-PHV2	A11S-SL01	A11SD-SLD
<b>Benelli</b>						
BN 251	2014-	BN4-PH01	BN4-PHV1	BN4-PHV2	BN4S-SL01	BN4SD-SLD
BN 302	2015-	BN5-PH01	BN5-PHV1	BN5-PHV2	BN5S-SL01	BN5SD-SLD
TNT 899	2009-	BN2-PH01	BN2-PHV1	BN2-PHV2		
Trek 899	2009-	BN1-PH01	BN1-PHV1	BN1-PHV2		BN1SD-SLD
BN 600R	2013-	BN3-2-PH01	BN3-2-PHV1	BN3-2-PHV2		
BN 600R	2013-	BN3-PH01	BN3-PHV1	BN3-PHV2	BN3S-SL01	BN3SD-SLD
<b>BMW</b>						
G310R	2016-	B14-PH01	B14-PHV1	B14-PHV2	B14S-SL01	B14SD-SLD
F800S	2006-	B1-PH01	B1-PHV1	B1-PHV2		
F800R	2009-2011	B5-PH01	B5-PHV1	B5-PHV2	B5S-SL01	B5SD-SLD
F800R	2012-2014	B9-2-PH01	B9-2-PHV1	B9-2-PHV2	B9S-2-SL01	B9-2SD-SLD
F800R	2012-2014	B9-PH01	B9-PHV1	B9-PHV2	B9S-SL01	B9SD-SLD
F800R	2015-	B16-PH01	B16-PHV1	B16-PHV2	B16S-SL01	B16SD-SLD
S1000RR	2010-2011	B4-PH01	B4-PHV1	B4-PHV2	B4S-SL01	B4SD-SLD
S1000RR	2012-2014	B6-PH01	B6-PHV1	B6-PHV2	B6S-SL01	B6SD-SLD
S1000RR	2015-	B10-PH01	B10-PHV1	B10-PHV2	B10S-SL01	B10SD-SLD
BMW S 1000 XR	2014-	B8-PH01	B8-PHV1	B8-PHV2	B8S-SL01	B8SD-SLD
S 1000 R	2014-2016	B7-PH01	B7-PHV1	B7-PHV2	B7S-SL01	B7SD-SLD
S 1000 R	2017-	B15-PH01	B15-PHV1	B15-PHV2	B15S-SL01	B15SD-SLD
R 1200 GS/ Adventure	2014-					
R NINE T	2014-					
R 1200 R / RS	2015-					
K 1200 R/K 1200 R Sport		B2-PH01	B2-PHV1	B2-PHV2	B2S-SL01	B2SD-SLD
K 1300 R	2009-	B3-PH01	B3-PHV1	B3-PHV2	B3S-SL01	B3SD-SLD
<b>Cagiva</b>						
Raptor 650		C3-PH01	C3-PHV1	C3-PHV2		
Raptor/V-Raptor/Xtra-Rapator 1000	2001-	C1-PH01	C1-PHV1	C1-PHV2		
Navigator 1000		C2-PH01	C2-PHV1	C2-PHV2		
<b>Ducati</b>						
Monster 600/750/ 900	-2000	D1(10)- PH01	D1(10)- PHV1	D1(10)-PHV2	D1(10)S-SL01	



	Year	PH01 white or black	PHV1 white or black	PHV2 white or black	SL01 white or black	DIAMOND
Monster S4/S4R/R5	All Years	D12-PH01	D12-PHV1	D12-PHV2	D12S-SL01	D12SD-SLD
Monster 600/625/695/750/800/ 900/900S/S2R/S1000	2001-	D2(12)- PH01	D2(12)- PHV1	D2(12)- PHV2	D2(12)S- SL01	D2(12)SD- SLD
Multistrada DS 1000/620/ 1100S		D3-PH01	D3-PHV1	D3-PHV2	D3S-SL01	D3SD-SLD
Monster 696	2008-	D4-PH01	D4-PHV1	D4-PHV2	D4S-SL01	D4SD-SLD
Monster 796	2010-	D4-PH01	D4-PHV1	D4-PHV2	D4S-SL01	D4SD-SLD
Monster 797	2017-	D17-PH01	D17-PHV1	D17-PHV2	D17S-SL01	D17SD-SLD
Monster 821	2014-	D8-PH01	D8-PHV1	D8-PHV2	D8S-SL01	D8SD-SLD
Multistrada 950	2017-	D18-PH01	D18-PHV1	D18-PHV2	D18S-SL01	D18SD-SLD
Monster 1100/1100S	2009-	D4-PH01	D4-PHV1	D4-PHV2	D4S-SL01	D4SD-SLD
Hypermotard 796	2010-	D5-PH01	D5-PHV1	D5-PHV2	D5S-SL01	D5SD-SLD
Hypermotard 1100	2007-	D5-PH01	D5-PHV1	D5-PHV2	D5S-SL01	D5SD-SLD
Hyperstrada 821	2014-	D9-PH01	D9-PHV1	D9-PHV2	D9S-SL01	D9SD-SLD
Hypermotard 821	2013-	D9-PH01	D9-PHV1	D9-PHV2	D9S-SL01	D9SD-SLD
Streetfighter 848	2012-	D6-PH01	D6-PHV1	D6-PHV2	D6S-SL01	D6SD-SLD
Streetfighter /S (1098)	2009-	D5-PH01	D5-PHV1	D5-PHV2	D5S-SL01	D5SD-SLD
Monster 1200/S	2014-	D19-PH01	D19-PHV1	D19-PHV2	D19S-SL01	D19SD-SLD
Hypermotard 939	2016-	D15-PH01	D15-PHV1	D15-PHV2	D15S-SL01	D15SD-SLD
Hyperstrada 939	2016-	D15-PH01	D15-PHV1	D15-PHV2	D15S-SL01	D15SD-SLD
Panigale 899/1199		D11-PH01	D11-PHV1	D11-PHV2	D11S-SL01	D11SD-SLD
Diavel	2011-	D7-PH01	D7-PHV1	D7-PHV2	D7S-SL01	D7SD-SLD
X-Diavel	2016-	D16-PH01	D16-PHV1	D16-PHV2	D16S-SL01	D16SD-SLD
Multistrada 1200	2010-2015					
Scrambler	2015-	D13-PH01	D13-PHV1	D13-PHV2	D13S-SL01	D13SD-SLD
<b>Honda</b>						
MSX 125 (GROM125)	2014-	H50-PH01	H50-PHV1	H50-PHV2	H50S-SL01	H50SD-SLD
CBR 125	2004-2010	H13-PH01	H13-PHV1	H13-PHV2	H13S-SL01	H13SD-SLD
CBR 125 R	2011-	H34-PH01	H34-PHV1	H34-PHV2	H34S-SL01	H34SD-SLD
CBF 125	2009-	H25-PH01	H25-PHV1	H25-PHV2		
CBF 125	2015-	H52-PH01	H52-PHV1	H52-PHV2		
VTR 250	2010-	H28-PH01	H28-PHV1	H28-PHV2		
CBR 250 R	2011-	H29-PH01	H29-PHV1	H29-PHV2	H29S-SL01	H29SD-SLD
CBR 300 R	2014-	H45-PH01	H45-PHV1	H45-PHV2	H45S-SL01	H45SD-SLD
CBF 500	2004-	H1-PH01	H1-PHV1	H1-PHV2		
CBR500R	2013-	H40-PH01	H40-PHV1	H40-PHV2	H40S-SL01	H40SD-SLD
CBR500R	2016-	H53-PH01	H53-PHV1	H53-PHV2	H53S-SL01	H53SD-SLD
CB500X / CB500F	2013-	H39-PH01	H39-PHV1	H39-PHV2	H39S-SL01	H39SD-SLD
CMX 500 Rebel	2017-	H57-PH01	H57-PHV1	H57-PHV2	H57S-SL01	H57SD-SLD
CB600F Hornet	1998-2006	H2-PH01	H2-PHV1	H2-PHV2	H2S-SL01	H2SD-SLD
CB600F Hornet	2007-	H5-PH01	H5-PHV1	H5-PHV2	H5S-SL01	H5SD-SLD
CB600F Hornet	2007-	H5-2-PH01	H5-2-PHV1	H5-2-PHV2	H5-2S-SL01	
CBF600(S)	2004-2007	H2-PH01	H2-PHV1	H2-PHV2	H2S-SL01	H2SD-SLD
CBF600(S)	2008-	H5-PH01	H5-PHV1	H5-PHV2	H5S-SL01	H5SD-SLD
CBF600(S)	2008-	H5-2-PH01	H5-2-PHV1	H5-2-PHV2	H5-2S-SL01	
CBR600F	2000-	H8-PH01	H8-PHV1	H8-PHV2	H8S-SL01	
CBR600F	2000-	H8-2-PH01	H8-2-PHV1	H8-2-PHV2		
CBR600F	2011 -	H33-PH01	H33-PHV1	H33-PHV2	H33S-SL01	
CBR600F	2011 -	H33-2-PH01	H33-2-PHV1	H33-2-PHV2		
CBR600RR	2003-2006	H10-PH01	H10-PHV1	H10-PHV2	H10S-SL01	
CBR600RR	2003-2006	H10-2-PH01	H10-2-PHV1	H10-2-PHV2		
CBR600RR	2007-2008	H7-PH01	H7-PHV1	H7-PHV2	H7S-SL01	H7SD-SLD
CBR600RR	2007-2008	H7-2-PH01	H7-2-PHV1	H7-2-PHV2		
CBR600RR	2009-2012	H26-PH01	H26-PHV1	H26-PHV2		
CBR600RR	2013-	H41-PH01	H41-PHV1	H41-PHV2	H41S-SL01	





	Year	PH01 white or black	PHV1 white or black	PHV2 white or black	SL01 white or black	DIAMOND
CBR650F	2014-	H43-PH01	H43-PHV1	H43-PHV2	H435-SL01	H435D-SLD
CB650F	2014-	H44-PH01	H44-PHV1	H44-PHV2	H445-SL01	H445D-SLD
NC700 X/S	2012-	H35-PH01	H35-PHV1	H35-PHV2	H355-SL01	H355D-SLD
NC750 X/S	2014-	H46-PH01	H46-PHV1	H46-PHV2	H465-SL01	H465D-SLD
NC700 X/S DCT (Automatic)	2012-	H47-PH01	H47-PHV1	H47-PHV2	H475-SL01	H475D-SLD
NC750 X/S DCT (Automatic)	2014-	H49-PH01	H49-PHV1	H49-PHV2	H495-SL01	H495D-SLD
VFR750 F		H9-PH01	H9-PHV1	H9-PHV2		
VFR800	1998-2001	H19-PH01	H19-PHV1	H19-PHV2		
VFR800	2002 -	H18-PH01	H18-PHV1	H18-PHV2	H185-SL01	H185D-SLD
VFR800	2002 -	H18-2-PH01	H18-2-PHV1	H18-2-PHV2		
VFR800	2014-	H48-PH01	H48-PHV1	H48-PHV2	H485-SL01	H485D-SLD
Crossrunner 800	2011-	H32-PH01	H32-PHV1	H32-PHV2		
CB900F Hornet	2002 -	H3-PH01	H3-PHV1	H3-PHV2	H35-SL01	H35D-SLD
CBR900RR	1996-1999	H11-PH01	H11-PHV1	H11-PHV2		
CBR900RR	1996-1999	H11-2-PH01	H11-2-PHV1	H11-2-PHV2		
CBR929/954RR	2000-2003	H12-PH01	H12-PHV1	H12-PHV2	H125-SL01	H125D-SLD
CB1000R Hornet	2008-2011	H22-PH01	H22-PHV1	H22-PHV2	H225-SL01	H225D-SLD
CBR1000RR	2004-2005	H14-PH01	H14-PHV1	H14-PHV2	H145-SL01	H145D-SLD
CBR1000RR	2004-2005	H14-2-PH01	H14-2-PHV1	H14-2-PHV2		
CBR1000RR	2006-2007	H4-PH01	H4-PHV1	H4-PHV2	H45-SL01	H45D-SLD
CBR1000RR	2006-2007	H4-2-PH01	H4-2-PHV1	H4-2-PHV2		
CBR1000RR	2008-2011	H20-PH01	H20-PHV1	H20-PHV2	H205-SL01	H205D-SLD
CBR1000RR	2008-2011	H20-2-PH01	H20-2-PHV1	H20-2-PHV2		
CBR1000RR with ABS	2009-2011	H21-PH01	H21-PHV1	H21-PHV2	H215-SL01	H215D-SLD
CBR1000RR	2012-2016	H36-PH01	H36-PHV1	H36-PHV2	H365-SL01	H365D-SLD
CBR1000RR with ABS	2012-2016	H38-PH01	H38-PHV1	H38-PHV2	H385-SL01	H385D-SLD
CBR1000RR	2017-	H55-PH01	H55-PHV1	H55-PHV2	H555-SL01	H555D-SLD
CBF1000	2006-2009	H6-PH01	H6-PHV1	H6-PHV2	H65-SL01	H65D-SLD
CBF1000	2010-	H27-PH01	H27-PHV1	H27-PHV2	H275-SL01	H275D-SLD
VTR1000F	1998-	H15-PH01	H15-PHV1	H15-PHV2	H155-SL01	
VTR SP1		H16-PH01	H16-PHV1	H16-PHV2		
VTR SP2		H54-PH01	H54-PHV1	H54-PHV2		
CRF1000L Africa Twin	2016					
X ADV	2017-	H58-PH01	H58-PHV1	H58-PHV2	H585-SL01	H585D-SLD
CB1100	2013-	H42-PH01	H42-PHV1	H42-PHV2		H425D-SLD
CB1100 RS/EX	2017-	H56-PH01	H56-PHV1	H56-PHV2		H565D-SLD
X11		H23-PH01	H23-PHV1	H23-PHV2		H235D-SLD
CBR1100XX Blackbird		H24-PH01	H24-PHV1	H24-PHV2		
VFR 1200 F/DCT	2011-	H30-PH01	H30-PHV1	H30-PHV2	H305-SL01	
VFR 1200 Crosstourer	2012-	H37-PH01	H37-PHV1	H37-PHV2	H375-SL01	H375D-SLD
CB1300	2002-	H17-PH01	H17-PHV1	H17-PHV2		
<b>Hyosung</b>						
GT 650Naked/GT 650S		O1-PH01	O1-PHV1	O1-PHV2	O15-SL01	
GT 650 R		O2-PH01	O2-PHV1	O2-PHV2	O25-SL01	
<b>Husqvarna</b>						
701 Supermoto	2016-	HQ-PH01	HQ-PHV1	HQ-PHV2	HQ5-SL01	HQ5D-SLD
<b>Kawasaki</b>						
Z125	2016-	K43-PH01	K43-PHV1	K43-PHV2	K435-SL01	
ZX-250R Ninja	2008-2012	K26-PH01	K26-PHV1	K26-PHV2	K265-SL01	
ZX-250R Ninja	2008-2012	K26-2-PH01	K26-2-PHV1	K26-2-PHV2	K26-25-SL01	K26-25D-SLD
Z250/300	2014-	K38-PH01	K38-PHV1	K38-PHV2	K385-SL01	K385D-SLD
Z250 SL	2014-	K41-PH01	K41-PHV1	K41-PHV2	K415-SL01	K415D-SLD





	Year	PH01 white or black	PHV1 white or black	PHV2 white or black	SL01 white or black	DIAMOND
Ninja 300	2013-	K33-PH01	K33-PHV1	K33-PHV2	K335-SL01	K335D-SLD
ER-5	1997-	K1-PH01	K1-PHV1	K1-PHV2		
ER-6 N	2006-2008	K7-PH01	K7-PHV1	K7-PHV2	K75-SL01	K75D-SLD
ER-6 F	2006-2008	K17-PH01	K17-PHV1	K17-PHV2	K175-SL01	K175D-SLD
ER-6 N	2009-2011	K23-PH01	K23-PHV1	K23-PHV2	K235-SL01	K235D-SLD
ER-6 F	2009-2011	K24-PH01	K24-PHV1	K24-PHV2	K245-SL01	K245D-SLD
ER-6 N	2012-2016	K30-PH01	K30-PHV1	K30-PHV2	K305-SL01	K305D-SLD
ER-6 F	2012-2016	K31-PH01	K31-PHV1	K31-PHV2	K315-SL01	K315D-SLD
ZX-6R	1998-1999	K21-PH01	K21-PHV1	K21-PHV2		
ZX-6R	2000-2002	K20-PH01	K20-PHV1	K20-PHV2		
ZX-6R/RR	2003-2004	K2-PH01	K2-PHV1	K2-PHV2		
ZX-6R/RR	2005-2006	K9-PH01	K9-PHV1	K9-PHV2		
ZX-6R/RR	2007-2008	K10-PH01	K10-PHV1	K10-PHV2	K105-SL01	
ZX-6R/RR	2009-2012	K25-PH01	K25-PHV1	K25-PHV2	K255-SL01	K255D-SLD
ZX-6R 636	2013-	K34-2-PH01	K34-2-PHV1	K34-2-PHV2		
ZX-6R 636	2013-	K34-PH01	K34-PHV1	K34-PHV2	K345-SL01	K345D-SLD
Ninja 650	2017-	K44-PH01	K44-PHV1	K44-PHV2	K445-SL01	K445D-SLD
Z650	2017-	K46-PH01	K46-PHV1	K46-PHV2	K465-SL01	K465D-SLD
Versys 650	2015-	K39-PH01	K39-PHV1	K39-PHV2	K395-SL01	K395D-SLD
Versys 650	2006-	K16-PH01	K16-PHV1	K16-PHV2	K165-SL01	K165D-SLD
Vulcan 650	2015-	K40-PH01	K40-PHV1	K40-PHV2	K405-SL01	K405D-SLD
Z750	2004-2006	K4-PH01	K4-PHV1	K4-PHV2	K45-SL01	K45D-SLD
Z750/R	2007-2011	K11-PH01	K11-PHV1	K11-PHV2	K115-SL01	K115D-SLD
Z800	2013-	K35-PH01	K35-PHV1	K35-PHV2	K355-SL01	K355D-SLD
Z900	2017-	K47-PH01	K47-PHV1	K47-PHV2	K475-SL01	K475D-SLD
Z900 (Alu adapters)	2017-	K48-PH01	K48-PHV1	K48-PHV2	K485-SL01	K485D-SLD
ZX-9R	1998-1999	K19-PH01	K19-PHV1	K19-PHV2		
ZX-9R	2000-2001	K22-PH01	K22-PHV1	K22-PHV2		
ZX-9R	2002-	K5-PH01	K5-PHV1	K5-PHV2		
KLV 1000	2004-2006	K18-PH01	K18-PHV1	K18-PHV2		
Versys 1000	2012-	K32-PH01	K32-PHV1	K32-PHV2	K325-SL01	K325D-SLD
ZX-10R	2004-2005	K6-PH01	K6-PHV1	K6-PHV2		
ZX-10R	2006-2007	K12-PH01	K12-PHV1	K12-PHV2		
ZX-10R	2008-2010	K15-PH01	K15-PHV1	K15-PHV2	K155-SL01	K155D-SLD
ZX-10R	2008-2010	K15-2-PH01	K15-2-PHV1	K15-2-PHV2		
ZX-10R	2011-2015	K29-PH01	K29-PHV1	K29-PHV2	K295-SL01	K295D-SLD
ZX-10R	2016-	K42-PH01	K42-PHV1	K42-PHV2	K425-SL01	K425D-SLD
Z1000	2003-2006	K4-PH01	K4-PHV1	K4-PHV2	K45-SL01	K45D-SLD
Z1000	2007-2009	K13-PH01	K13-PHV1	K13-PHV2	K135-SL01	K135D-SLD
Z1000	2010-	K27-PH01	K27-PHV1	K27-PHV2	K275-SL01	K275D-SLD
Z1000	2010-	K27-2-PH01	K27-2-PHV1	K27-2-PHV2	K27-2S-SL01	
Z1000	2014-	K37-PH01	K37-PHV1	K37-PHV2	K375-SL01	K375D-SLD
Z1000 SX	2011-2016	K28-PH01	K28-PHV1	K28-PHV2	K285-SL01	K285D-SLD
Z1000 SX	2017-	K45-PH01	K45-PHV1	K45-PHV2	K455-SL01	K455D-SLD
ZRX 1200	2001-	K8-PH01	K8-PHV1	K8-PHV2		
ZZR 1400	2006-2011	K14-PH01	K14-PHV1	K14-PHV2	K145-SL01	K145D-SLD
ZZR 1400	2012-	K36-PH01	K36-PHV1	K36-PHV2		K365D-SLD
<b>KTM</b>						
125 Duke	2011-2016	KTM3-PH01	KTM3-PHV1	KTM3-PHV2	KTM35-SL01	KTM35D-SLD
125 Duke	2017-	KTM8-PH01	KTM8-PHV1	KTM8-PHV2	KTM85-SL01	KTM85D-SLD
200 Duke	2012-	KTM3-PH01	KTM3-PHV1	KTM3-PHV2	KTM35-SL01	KTM35D-SLD
390 Duke	2013-	KTM4-PH01	KTM4-PHV1	KTM4-PHV2	KTM45-SL01	KTM45D-SLD
RC 125/200/390	2014-2016	KTM5-PH01	KTM5-PHV1	KTM5-PHV2	KTM55-SL01	KTM55D-SLD
RC 125/200/390	2017-	KTM5-PH01	KTM5-PHV1	KTM5-PHV2	KTM55-SL01	KTM55D-SLD



	Year	PH01 white or black	PHV1 white or black	PHV2 white or black	SL01 white or black	DIAMOND
990 Super Duke / R	2005-	KTM1-PH01	KTM1-PHV1	KTM1-PHV2		
990 Super Moto/R/SMT	2008-	KTM2-PH01	KTM2-PHV1	KTM2-PHV2		
950/990 Adventure	2003-					
1050 Adventure	2015					
1290 Super Duke GT	2016-					
1290 Super Duke	2014-	KTM6-PH01	KTM6-PHV1	KTM6-PHV2	KTM6S-SL01	KTM6SD-SLD
<b>MV Agusta</b>						
675 Brutale	2012-	MV1-PH01	MV1-PHV1	MV1-PHV2	MV1S-SL01	MV1SD-SLD
F3 675	2012-	MV3-PH01	MV3-PHV1	MV3-PHV2	MV3S-SL01	MV3SD-SLD
800 Brutale/Rivale/Dragster	2013-	MV1-PH01	MV1-PHV1	MV1-PHV2	MV1S-SL01	MV1SD-SLD
Stradale 800	2014-	MV2-PH01	MV2-PHV1	MV2-PHV2	MV2S-SL01	MV2SD-SLD
Brutale 910		MV5-PH01	MV5-PHV1	MV5-PHV2	MV5S-SL01	MV5SD-SLD
Brutale 990R/ 1090RR	2010-	MV4-PH01	MV4-PHV1	MV4-PHV2	MV4S-SL01	MV4SD-SLD
<b>Suzuki</b>						
GSX-R125	2017-	S44-PH01	S44-PHV1	S44-PHV2	S44S-SL01	S44SD-SLD
GSX-S 125	2017-	S46-PH01	S46-PHV1	S46-PHV2	S46S-SL01	S46SD-SLD
Inazuma 250	2012-	S38-PH01	S38-PHV1	S38-PHV2		
GSX-R250	2017-	S45-PH01	S45-PHV1	S45-PHV2	S45S-SL01	S45SD-SLD
GS500E		S1-PH01	S1-PHV1	S1-PHV2		
GSR 600	2006-	S20-PH01	S20-PHV1	S20-PHV2	S20S-SL01	S20SD-SLD
GSF 600 BANDIT	1995-2004	S17-PH01	S17-PHV1	S17-PHV2	S17S-SL01	
GSX-R 600 SRAD	1997-2000	S5-PH01	S5-PHV1	S5-PHV2		
GSX-R 750 SRAD	1996-1999	S5-PH01	S5-PHV1	S5-PHV2		
GSX-R 600	2001-2003	S6-PH01	S6-PHV1	S6-PHV2	S6S-SL01	
GSX-R 750	2000-2003	S6-PH01	S6-PHV1	S6-PHV2	S6S-SL01	
GSX-R 600/750	2004-2005	S7-PH01	S7-PHV1	S7-PHV2	S7S-SL01	
GSX-R 600/750	2006-2007	S21-PH01	S21-PHV1	S21-PHV2	S21S-SL01	S21SD-SLD
GSX-R 600/750	2006-2007	S21-2-PH01	S21-2-PHV1	S21-2-PHV2		
GSX-R 600/750	2008-2010	S23-PH01	S23-PHV1	S23-PHV2	S23S-SL01	S23SD-SLD
GSX-R 600/750	2008-2010	S23-2-PH01	S23-2-PHV1	S23-2-PHV2		
GSX-R 600/750	2011-	S32-PH01	S32-PHV1	S32-PHV2	S32S-SL01	S32SD-SLD
GSX-R 600/750	2011-	S32-2-PH01	S32-2-PHV1	S32-2-PHV2		
GSX 600/750 F	1998-	S16-PH01	S16-PHV1	S16-PHV2	S16S-SL01	
GSX 650 F	2008-2010	S26-PH01	S26-PHV1	S26-PHV2		
GSF 650 BANDIT	2007-	S8-PH01	S8-PHV1	S8-PHV2	S8S-SL01	S8SD-SLD
SV 650 N/S	1998-2002	S2-PH01	S2-PHV1	S2-PHV2		
SV 650 N/S	2003-2006	S3-PH01	S3-PHV1	S3-PHV2	S3S-SL01	S3SD-SLD
SV 650 N/S	2007-2015	S22-PH01	S22-PHV1	S22-PHV2	S22S-SL01	S22SD-SLD
SV 650	2016-	S42-PH01	S42-PHV1	S42-PHV2	S42S-SL01	S42SD-SLD
DL 650 V-STROM	-2011	S25-PH01	S25-PHV1	S25-PHV2	S25S-SL01	
DL 650 V-STROM	2012-	S37-PH01	S37-PHV1	S37-PHV2	S37S-SL01	
SFV 650 Gladius	2008-	S30-PH01	S30-PHV1	S30-PHV2	S30S-SL01	S30SD-SLD
GSX 750 INAZUMA		S17-PH01	S17-PHV1	S17-PHV2	S17S-SL01	
GSR 750	2011-	S33-PH01	S33-PHV1	S33-PHV2	S33S-SL01	S33SD-SLD
GSX-S 750	2017-	S43-PH01	S43-PHV1	S43-PHV2	S43S-SL01	S43SD-SLD
SV 1000 N/S	2003-	S4-PH01	S4-PHV1	S4-PHV2	S4S-SL01	S4SD-SLD
DL 1000 V-STROM	2014-	S39-PH01	S39-PHV1	S39-PHV2	S39S-SL01	S39SD-SLD
DL 1000 V-STROM	-2011	S25-PH01	S25-PHV1	S25-PHV2	S25S-SL01	
TL 1000 S	1997-	S14-PH01	S14-PHV1	S14-PHV2		
TL 1000 R	1998-	S19-PH01	S19-PHV1	S19-PHV2		
GSX-S 1000	2014-	S40-PH01	S40-PHV1	S40-PHV2	S40S-SL01	S40SD-SLD
GSX-S 1000 F	2014-	S41-PH01	S41-PHV1	S41-PHV2	S41S-SL01	S41SD-SLD
GSX-R 1000	2001-2002	S11-PH01	S11-PHV1	S11-PHV2		



PVN front wheel	PV1 front wheel	PV2 front wheel	PKN rear wheel	PK1 rear wheel	PK2 rear wheel	PPH ahead twister protectors	PM engine crash protectors
KTM1PVN	KTM1PV1	KTM1PV2	KTM1PKN	KTM1PK1	KTM1PK2		
KTM9PVN			KTM9PKN				
KTM7PVN			KTM7PKN				
KTM6PVN	KTM6PV1	KTM6PV2	KTM6PKN		KTM6PK2		
KTM6PVN	KTM6PV1	KTM6PV2	KTM6PKN		KTM6PK2		
MV1PVN	MV1PV1	MV1PV2	MV1PKN	MV1PK1	MV1PK2		
MV3PVN	MV3PV1	MV3PV2					
MV1PVN	MV1PV1	MV1PV2					
MV5PVN	MV5PV1	MV5PV2					
MV4PVN	MV4PV1	MV4PV2					
S20PVN	S20PV1	S20PV2	S20PKN	S20PK1	S20PK2		S20PM2
							S17PM3
S5PVN	S5PV1	S5PV2	S5PKN	S5PK1	S5PK2		
S5PVN	S5PV1	S5PV2	S5PKN	S5PK1	S5PK2		
S6PVN	S6PV1	S6PV2	S6PKN	S6PK1	S6PK2		
S6PVN	S6PV1	S6PV2	S6PKN	S6PK1	S6PK2		
S7PVN	S7PV1	S7PV2	S7PKN	S7PK1	S7PK2		
S21PVN	S21PV1	S21PV2	S21PKN	S21PK1	S21PK2	S21PPH	S21PM2
S21PVN	S21PV1	S21PV2	S21PKN	S21PK1	S21PK2	S21PPH	S21PM2
S23PVN	S23PV1	S23PV2	S23PKN	S23PK1	S23PK2	S23PPH	S23PM2
S23PVN	S23PV1	S23PV2	S23PKN	S23PK1	S23PK2	S23PPH	S23PM2
S32PVN	S32PV1	S32PV2	S32PKN	S32PK1	S32PK2	S32PPH	S32PM2
S32PVN	S32PV1	S32PV2	S32PKN	S32PK1	S32PK2	S32PPH	S32PM2
S26PVN	S26PV1	S26PV2	S26PKN	S26PK1	S26PK2		
S8PVN	S8PV1	S8PV2	S8PKN	S8PK1	S8PK2		
			S30PKN	S30PK1	S30PK2		
							S17PM3
S33PVN	S33PV1	S33PV2	S33PKN	S33PK1	S33PK2		
S43PVN	S43PV1	S43PV2	S43PKN	S43PK1	S43PK2		
S4PVN	S4PV1	S4PV2	S4PKN	S4PK1	S4PK2		
S39PVN	S39PV1	S39PV2	S39PKN	S39PK1	S39PK2		
S14PVN	S14PV1	S14PV2	S14PKN	S14PK1	S14PK2		
S19PVN	S19PV1	S19PV2	S19PKN	S19PK1	S19PK2		
S40PVN		S40PV2	S40PKN		S40PK2		
S41PVN		S41PV2	S41PKN		S41PK2		
S11PVN	S11PV1	S11PV2	S11PKN	S11PK1	S11PK2		

	Year	PH01 white or black	PHV1 white or black	PHV2 white or black	SL01 white or black	DIAMOND
GSX-R 1000	2003-2004	S12-PH01	S12-PHV1	S12-PHV2		
GSX-R 1000	2005-2006	S13-PH01	S13-PHV1	S13-PHV2		
GSX-R 1000	2007-2008	S15-PH01	S15-PHV1	S15-PHV2	S155-SL01	S155D-SLD
GSX-R 1000	2009-2011	S31-PH01	S31-PHV1	S31-PHV2	S315-SL01	S315D-SLD
GSX-R 1000	2012-2016	S36-PH01	S36-PHV1	S36-PHV2	S365-SL01	S365D-SLD
GSX-R 1000	2017-	S34-PH01	S34-PHV1	S34-PHV2	S345-SL01	S345D-SLD
GSF 1200 Bandit	1996-2005	S17-PH01	S17-PHV1	S17-PHV2	S175-SL01	
GSX 1200 INAZUMA		S17-PH01	S17-PHV1	S17-PHV2	S175-SL01	
GSF 1200 Bandit	2006	S28-PH01	S28-PHV1	S28-PHV2	S285-SL01	
GSF 1250 Bandit	2007-	S27-PH01	S27-PHV1	S27-PHV2	S275-SL01	S275D-SLD
GSX 1250 F	2010-	S35-PH01	S35-PHV1	S35-PHV2	S355-SL01	S355D-SLD
GSX-R 1300 Hayabusa	1999-2007	S9-PH01	S9-PHV1	S9-PHV2	S95-SL01	
GSX-R 1300 Hayabusa	1999-2007	S9-2-PH01	S9-2-PHV1	S9-2-PHV2		
GSX-R 1300 Hayabusa	2008-	S24-PH01	S24-PHV1	S24-PHV2	S245-SL01	S245D-SLD
GSX-R 1300 Hayabusa	2008-	S24-2-PH01	S24-2-PHV1	S24-2-PHV2		
GSX 1400	2002-	S10-PH01	S10-PHV1	S10-PHV2	S105-SL01	
B-KING	2008-	S29-PH01	S29-PHV1	S29-PHV2	S295-SL01	S295D-SLD
<b>Triumph</b>						
Speed Triple T 509	1997-2003	T1-PH01	T1-PHV1	T1-PHV2		
Speed Triple 1050	2005-2010	T2-PH01	T2-PHV1	T2-PHV2	T25-SL01	T25D-SLD
Speed Triple 1050	2005-2010	T2-2-PH01	T2-2-PHV1	T2-2-PHV2		T2-2SD-SLD
Speed Triple 1050 /R	2011-2015	T10-PH01	T10-PHV1	T10-PHV2	T105-SL01	T105D-SLD
Speed Triple 1050 S/R	2016-	T16-PH01	T16-PHV1	T16-PHV2	T165-SL01	T165D-SLD
Speed Triple T509 / 955i	2002-2004	T3-PH01	T3-PHV1	T3-PHV2	T35-SL01	T35D-SLD
Street Triple 675	2007-2012	T4-PH01	T4-PHV1	T4-PHV2	T45-SL01	T45D-SLD
Street Triple 675R	2009-2012	T4-PH01	T4-PHV1	T4-PHV2	T45-SL01	T45D-SLD
Street Triple 675	2007-2012	T4-2-PH01	T4-2-PHV1	T4-2-PHV2	T4-25-SL01	
Street Triple 675R	2009-2012	T4-2-PH01	T4-2-PHV1	T4-2-PHV2	T4-25-SL01	
Street Triple 675/R	2013-	T13-PH01	T13-PHV1	T13-PHV2	T135-SL01	T135D-SLD
Street Triple 765	2017-	T18-PH01	T18-PHV1	T18-PHV2	T185-SL01	T185D-SLD
Daytona 675	2006-2010	T5-PH01	T5-PHV1	T5-PHV2	T55-SL01	T55D-SLD
Daytona 675 R	2011-2012	T5-PH01	T5-PHV1	T5-PHV2	T55-SL01	T55D-SLD
Daytona 675	2013-	T12-PH01	T12-PHV1	T12-PHV2	T125-SL01	T125D-SLD
Tiger 800	2011-	T9-PH01	T9-PHV1	T9-PHV2	T95-SL01	T95D-SLD
Tiger 800 CX	2015-	T17-PH01	T17-PHV1	T17-PHV2	T175-SL01	T175D-SLD
Street Twin 900 / Street Cup 900	2016-	T14-PH01	T14-PHV1	T14-PHV2	T145-SL01	T145D-SLD
Tiger 1200 Explorer	2012-	T11-PH01	T11-PHV1	T11-PHV2	T115-SL01	T115D-SLD
Sprint ST 1050	2005-	T6-PH01	T6-PHV1	T6-PHV2	T65-SL01	T65D-SLD
Sprint GT 1050	2010-	T8-PH01	T8-PHV1	T8-PHV2	T85-SL01	T85D-SLD
Tiger 1050	2007-	T7-PH01	T7-PHV1	T7-PHV2	T75-SL01	T75D-SLD
Thruxton /R 1200	2016-	T15-PH01	T15-PHV1	T15-PHV2	T155-SL01	T155D-SLD
<b>Yamaha</b>						
YZF-125R	2008-	Y20-PH01	Y20-PHV1	Y20-PHV2		
MT-125	2014-	Y38-PH01	Y38-PHV1	Y38-PHV2		
MT-03	2015-	Y40-PH01	Y40-PHV1	Y40-PHV1	Y405-SL01	Y345D-SLD
YZF-R3/250	2014-	Y34-PH01	Y34-PHV1	Y34-PHV2	Y345-SL01	Y345D-SLD
XJ6/Diversion	2009 -	Y17-PH01	Y17-PHV1	Y17-PHV2	Y175-SL01	Y175D-SLD
XJ6 Diversion F	2010-	Y28-PH01	Y28-PHV1	Y28-PHV2	Y285-SL01	Y285D-SLD
YZF 600 ThunderCat	1996-	Y1-PH01	Y1-PHV1	Y1-PHV2		
R6	1999-2002	Y2-PH01	Y2-PHV1	Y2-PHV2		
R6	2003-2005	Y3-PH01	Y3-PHV1	Y3-PHV2		
R6	2006-2016	Y15-2-PH01	Y15-2-PHV1	Y15-2-PHV2		
R6	2006-2016	Y15-PH01	Y15-PHV1	Y15-PHV2	Y155-SL01	Y155D-SLD

<b>PVN front wheel</b>	<b>PV1 front wheel</b>	<b>PV2 front wheel</b>	<b>PKN rear wheel</b>	<b>PK1 rear wheel</b>	<b>PK2 rear wheel</b>	<b>PPH ahead twister protectors</b>	<b>PM engine crash protectors</b>
S12PVN	S12PV1	S12PV2	S12PKN	S12PK1	S12PK2		
S13PVN	S13PV1	S13PV2	S13PKN	S13PK1	S13PK2		
S15PVN	S15PV1	S15PV2	S15PKN	S15PK1	S15PK2	S15PPH	S15PM2
S31PVN	S31PV1	S31PV2	S31PKN	S31PK1	S31PK2	S31PPH	S31PM2
S36PVN	S36PV1	S36PV2	S36PKN	S36PK1	S36PK2	S36PPH	S36PM2
S34PVN	S34PV1	S34PV2	S34PKN	S34PK1	S34PK2	S34PPH	
							S17PM3
							S17PM3
S28PVN	S28PV1	S28PV2	S28PKN	S28PK1	S28PK2		S17PM3
S27PVN	S27PV1	S27PV2	S27PKN	S27PK1	S27PK2		
S35PVN	S35PV1	S35PV2	S35PKN	S35PK1	S35PK2		
S9PVN	S9PV1	S9PV2	S9PKN	S9PK1	S9PK2		
S9PVN	S9PV1	S9PV2	S9PKN	S9PK1	S9PK2		
S24PVN	S24PV1	S24PV2	S24PKN	S24PK1	S24PK2		
S24PVN	S24PV1	S24PV2	S24PKN	S24PK1	S24PK2		
S10PVN	S10PV1	S10PV2	S10PKN	S10PK1	S10PK2		
S29PVN	S29PV1	S29PV2	S29PKN	S29PK1	S29PK2		
T1PVN	T1PV1	T1PV2	T1PKN	T1PK1	T1PK2		T1PM1
T2PVN	T2PV1	T2PV2	T2PKN	T2PK1	T2PK2		T2PM1
T2PVN	T2PV1	T2PV2	T2PKN	T2PK1	T2PK2		T2PM1
T10PVN	T10PV1	T10PV2	T10PKN	T10PK1	T10PK2		T10PM1
T16PVN	T16PV1	T16PV2	T16PKN	T16PK1	T16PK2		T16PM1
T3PVN	T3PV1	T3PV2	T3PKN	T3PK1	T3PK2		T3PM1
T4PVN	T4PV1	T4PV2	T4PKN	T4PK1	T4PK2	T4PPH	
T4PVN	T4PV1	T4PV2	T4PKN	T4PK1	T4PK2	T4PPH	
T4PVN	T4PV1	T4PV2	T4PKN	T4PK1	T4PK2		
T4PVN	T4PV1	T4PV2	T4PKN	T4PK1	T4PK2		
T13PVN	T13PV1	T13PV2	T13PKN	T13PK1	T13PK2		
T18PVN	T18PV1	T18PV2	T18PKN	T18PK1	T18PK2	T18PPH	T18PM1
T5PVN	T5PV1	T5PV2	T5PKN	T5PK1	T5PK2	T5PPH	
T5PVN	T5PV1	T5PV2	T5PKN	T5PK1	T5PK2	T5PPH	
T12PVN	T12PV1	T12PV2	T12PKN	T12PK1	T12PK2	T12PPH	
T9PVN	T9PV1	T9PV2	T9PKN	T9PK1	T9PK2		
T17PVN	T17PV1	T17PV2	T17PKN	T17PK1	T17PK2		
T14PVN	T14PV1	T14PV2	T14PKN	T14PK1	T14PK2		
T11PVN	T11PV1	T11PV2	T11PKN	T11PK1	T11PK2		
T6PVN	T6PV1	T6PV2	T6PKN	T6PK1	T6PK2		
T8PVN	T8PV1	T8PV2	T8PKN	T8PK1	T8PK2		
T7PVN	T7PV1	T7PV2	T7PKN	T7PK1	T7PK2		T7PM1
T15PVN	T15PV1	T15PV2	T15PKN	T15PK1	T15PK2		
Y34PVN		Y34PV2	Y34PKN		Y34PK2		
Y2PVN	Y2PV1	Y2PV2	Y2PKN	Y2PK1	Y2PK2		
Y3PVN	Y3PV1	Y3PV2	Y3PKN	Y3PK1	Y3PK2	Y3PPH	
Y15PVN	Y15PV1	Y15PV2	Y15PKN		Y15PK2	Y15PPH	



	Year	PH01 white or black	PHV1 white or black	PHV2 white or black	SL01 white or black	DIAMOND
R6	2017-	Y44-PH01	Y44-PHV1	Y44-PHV2	Y445-SL01	Y445D-SLD
FZS 600 Fazer	1998-2003	Y4-PH01	Y4-PHV1	Y4-PHV2	Y45-SL01	Y45D-SLD
FZ-6	2004-	Y5-PH01	Y5-PHV1	Y5-PHV2	Y55-SL01	Y55D-SLD
MT03	2006-	Y29-PH01	Y29-PHV1	Y29-PHV2		
MT-07	2016-	Y33-PH01	Y33-PHV1	Y33-PHV2	Y335-SL01	Y335D-SLD
MT-07 (two points)	2016-	Y47-PH01	Y47-PHV1	Y47-PHV2	Y475-SL01	Y475D-SLD
XSR 700	2014-	Y33-PH01	Y33-PHV1	Y33-PHV2	Y335-SL01	Y335D-SLD
MT-07 Tracer	2016-	Y42-PH01	Y42-PHV1	Y42-PHV2	Y425-SL01	Y425D-SLD
FZ-8	2010-	Y27-PH01	Y27-PHV1	Y27-PHV2	Y275-SL01	Y275D-SLD
TDM 900	2002-2006	Y19-PH01	Y19-PHV1	Y19-PHV2	Y195-SL01	Y195D-SLD
MT-09/ABS	2014-2016	Y31-PH01	Y31-PHV1	Y31-PHV2	Y315-SL01	Y315D-SLD
MT-09	2017-	Y45-PH01	Y45-PHV1	Y45-PHV2	Y455-SL01	Y455D-SLD
MT-09 (two points)	2017-	Y46-PH01	Y46-PHV1	Y46-PHV2	Y465-SL01	Y465D-SLD
MT-09 Tracer	2014-	Y35-PH01	Y35-PHV1	Y35-PHV2	Y355-SL01	Y355D-SLD
XSR 900	2016-	Y31-PH01	Y31-PHV1	Y31-PHV2	Y315-SL01	Y315D-SLD
YZF 1000 ThunderAce	1996-2001	Y6-PH01	Y6-PHV1	Y6-PHV2		
R1	1998-1999	Y7-PH01	Y7-PHV1	Y7-PHV2		
R1	2000-2001	Y18-PH01	Y18-PHV1	Y18-PHV2		
R1	2002-2003	Y8-PH01	Y8-PHV1	Y8-PHV2	Y85-SL01	Y85D-SLD
R1	2004-2006	Y9-PH01	Y9-PHV1	Y9-PHV2	Y95-SL01	Y95D-SLD
R1	2004-2006	Y9-2-PH01	Y9-2-PHV1	Y9-2-PHV2		
R1	2007-2008	Y16-PH01	Y16-PHV1	Y16-PHV2	Y165-SL01	Y165D-SLD
R1	2009-2014	Y12-PH01	Y12-PHV1	Y12-PHV2	Y125-SL01	Y125D-SLD
R1	2009-2014	Y12-2-PH01	Y12-2-PHV1	Y12-2-PHV2		
YZF-R1	2015-	Y36-PH01	Y36-PHV1	Y36-PHV2	Y365-SL01	Y365D-SLD
MT10	2016-	Y41-PH01	Y41-PHV1	Y41-PHV2	Y415-SL01	Y415D-SLD
FZS 1000 Fazer	2001-2005	Y10-PH01	Y10-PHV1	Y10-PHV2	Y105-SL01	Y105D-SLD
FZ 1	2006-	Y14-PH01	Y14-PHV1	Y14-PHV2	Y145-SL01	Y145D-SLD
FZ 1	2006-	Y37-PH01	Y37-PHV1	Y37-PHV2	Y375-SL01	Y375D-SLD
MT01				Y30-SL02		
MT01		Y43-PH01	Y43-PHV1	Y43-PHV2	Y435-SL01	Y435D-SLD
BT 1100 Bulldog	2002-	Y39-PH01	Y39-PHV1	Y39-PHV2		
XJR 1300	1998-	Y13-PH01	Y13-PHV1	Y13-PHV2	Y135-SL01	
FJR 1300	2001-2005	Y11-PH01	Y11-PHV1	Y11-PHV2	Y115-SL01	Y115D-SLD
FJR 1300	2001-2005	Y11-2-PH01	Y11-2-PHV1	Y11-2-PHV2		
FJR 1300	2006-	Y24-PH01	Y24-PHV1	Y24-PHV2	Y245-SL01	Y245D-SLD
FJR 1300 A/AS	2013-	Y32-PH01	Y32-PHV1	Y32-PHV2	Y325-SL01	
V-Max	2009 -	Y21-PH01	Y21-PHV1	Y21-PHV2		

 require drilling the original fairings



## ENGINE COVERS

MODEL	SET CODE	SINGLE CODE
CBR600 07-16	ECRDH04	ECRDH041
		ECRDH042
		ECRDH043
CBR1000 08-16	ECRDH06	ECRDH061
		ECRDH062
		ECRDH063
GSXR600/750 11-16	ECRDS02	ECRDS021
		ECRDS022
		ECRDS023
GSXR1000 09-16	ECRDS04	ECRDS041
		ECRDS042
		ECRDS043
Yamaha MT10 2016-	ECRDY02	ECRDY021
		ECRDY022
		ECRDY023
R1 2015-2016	ECRDY06	ECRDY061
		ECRDY062
		ECRDY063
MT09/FZ-09 2014	ECRDY07	ECRDY071
		ECRDY072
		ECRDY073
		ECRDY074
R6 06-16	ECRDY05	ECRDY051
		ECRDY052
		ECRDY053
R25/R3 2016	ECRDY01	ECRDY011
		ECRDY012
		ECRDY013
Z250/300/EX300 NIJIA250/300 14-16	ECRDK11	ECRDK111
		ECRDK112
Z800/Z800E 13-16	ECRDK12	ECRDK121
		ECRDK122
		ECRDK123
ZX6R 09-16	ECRDK02	ECRDK021
		ECRDK022
		ECRDK023
ZX10 11-16	ECRDK06	ECRDK061
		ECRDK062
		ECRDK063
Kawasaki Z650 2017-	ECRDK08	ECRDK081
		ECRDK083
Kawasaki ER6N 06-2016	ECRDK07	ECRDK071
		ECRDK072
		ECRDK073
S1000R/S1000RR/S1000XR 09-15	ECRDB01	ECRDB011
		ECRDB012
		ECRDB013
DUCATI 1199 12-14 DUCATI 1299 16	ECRDD01	ECRDD011
		ECRDD012



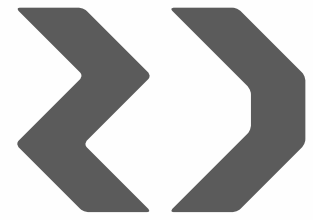
# CRASH FRAMES

	Year	Code	Color
<b>Aprilia</b>			
Pegaso 650	1992-1995	CF16KD	black dim
Pegaso 650	1996-	CF11KD	black dim
Pegaso 650 Trail, Strada		CF21KD	black dim
ETV 1000 Caponord		CF13KD	black dim
<b>Ducati</b>			
Multistrada 1200	2010-2014	CF03KD	black dim
<b>BMW</b>			
F650	1993-1996	CF65KD	black dim
F650	1993-1996	CF65S	silver
F650	1997-	CF74KD	black dim
F650	1997-	CF74S	silver
F650GS	2007-2011	CF30KD	black dim
F700GS	2012-	CF30KD	black dim
F 800 GS (type E8GS)	2008-2012	CF30KD	black dim
F 800 GS (type E8GS,K72)	2012-2014	CF30KD	black dim
F 800 R	2014-	CF48KD	black dim
R 850 R	2002-	CF75KD	black dim
R 850 R	2002-	CF75S	silver
R 1150 R	2001-	CF75KD	black dim
R 1150 R	2001-	CF75S	silver
R1100 GS / Adventure	1994-1999	CF43KD	black dim
R1100 GS / Adventure	1994-1999	CF43S	silver
R1100 S		CF20S	silver
R1150 GS / Adventure	2000-2003	CF08S	silver
R1150 GS / Adventure	2000-2003	CF08KD	black dim
R1200 GS / Adventure	2004-2012	CF38S	silver, lower
R1200 GS / Adventure	2004-2012	CF38KD	black dim, lower
R1200 GS / Adventure/for original lower crash frames	2004-2007	CF78S	silver - upper frame
R1200 GS / Adventure/for original lower crash frames	2004-2007	CF78KD	black dim - upper frame
R1200 GS / Adventure	2004-2007	CF39S	silver, upper
R1200 GS / Adventure	2004-2007	CF39KD	black dim, upper
R1200 GS / Adventure	2004-2007	CF40S	silver, lower + upper
R1200 GS / Adventure	2004-2007	CF40KD	black dim, lower + upper
R1200 GS Adventure	2014-	CF46S	silver lower+upper
R1200 GS Adventure	2014-	CF46KD	black dim lower+upper
R1200 GS Adventure	2014-	CF47KD	black dim, lower
R1200 GS Adventure	2014-	CF47S	silver, lower
<b>Cagiva</b>			
Elefant		CF17KD	black dim
<b>Honda</b>			
CBF500	2004-2012	CF61KD	black dim
CBF500	2004-2012	CF61S	silver
CBF600	2008-2012	CF62KD	lower frames black dim
CBF600	2008-2012	CF63KD	upper frames black dim
CBF600	2008-2012	CF64KD	upper and lower frames black dim
CB650F	2014-	CF89KD	black dim
NX650 Dominator		CF02W	white
NX650 Dominator		CF02KD	black dim
XRV 650 Africa Twin (type RD03)		CF07KD	black dim
XLV 600 Transalp	1988-1999	CF45KD	black dim-includes the tube under the light
XLV 650 Transalp	2000-2007	CF28KD	black dim-without the connector tube under the light
XLV 650 Transalp	2000-2007	CF29KD	black dim-includes the tube under the light

	Year	Code	Color
XLV 700 Transalp	2007-	CF42KD	black dim-includes the tube under the light
NC700/750 S	2011-	CF41KD	black dim
NC700/750 X	2011-	CF36KD	black dim
NC750 S	2016-	CF69KD	black dim
NC750 X	2016-	CF70KD	black dim
XL 1000 Varadero	2003-	CF34KD	black dim
X11 - Eleven		CF19KD	black dim
CRF 1000L Africa Twin	2016-	CF54KD	upper frames black dim
CRF 1000L Africa Twin	2016-	CF55KD	lower frames black dim
CRF 1000L Africa Twin	2016-	CF54S	upper frames silver
CRF 1000L Africa Twin	2016-	CF55S	lower frames silver
CRF 1000L Africa Twin	2016-	CF57S	upper + lower silver
CRF 1000L Africa Twin	2016-	CF57KD	upper + lower black dim
CRF 1000L Africa Twin DCT	2016-	CF67KD	lower frames black dim
CRF 1000L Africa Twin DCT	2016-	CF67S	lower frames silver
CRF 1000L Africa Twin DCT	2016-	CF68S	upper + lower silver
CRF 1000L Africa Twin DCT	2016-	CF68KD	upper + lower black dim
<b>Kawasaki</b>			
Versys 650	2015-	CF50KD	black dim
Vulcan 650	2015-	CF51KD	black dim
Z650	2016-	CF87KD	black dim
ER6-N	2009-2011	CF77KD	black dim
Z900	2016-	CF88KD	black dim
<b>KTM</b>			
LC4 640		CF22KD	black dim
LC4 640		CF22O	orange
950 Adventure/basic crash frames		CF18KD	black dim
950 Adventure/basic crash frames		CF18O	orange
990 Adventure/basic crash frames		CF53KD	black dim
990 Adventure/basic crash frames		CF53O	orange
950 Adventure/basic crash frames + lower frames		CF83KD	black dim
950 Adventure/basic crash frames + lower frames		CF83O	orange
990 Adventure/basic crash frames + lower frames		CF84KD	black dim
990 Adventure/basic crash frames + lower frames		CF84O	orange
950 Adventure/basic + lower + upper frames		CF85KD	black dim
950 Adventure/basic + lower + upper frames		CF85O	orange
990 Adventure/basic + lower + upper frames		CF86KD	black dim
990 Adventure/basic + lower + upper frames		CF86O	orange
1050 Adventure	2015-	CF56KD	black dim
1050 Adventure	2015-	CF56O	orange
1190 Adventure	2013-	CF56KD	black dim
1190 Adventure	2013-	CF56O	orange
1290 SuperDuke	2014-	CF82KD	black dim
1290 SuperDuke	2014-	CF82O	orange
1290 SuperDuke GT	2016-	CF81O	orange
1290 SuperDuke GT	2016-	CF81KD	black dim
<b>Moto Guzzi</b>			
V7 Stone/Special/Racer		CF44KD	black dim
Breva 750		CF66KD	black dim
Breva 750		CF66S	silver
<b>Suzuki</b>			
GSF 600 Bandit / GSX 750 Inazuma	1995-2004	CF04KD	black dim
GSF 600 Bandit / GSX 750 Inazuma	1995-2004	CF05KD	black dim
DR 650 SE		CF10KD	black dim
DR 650 RS		CF12KD	black dim

	Year	Code	Color
<b>GSF 650 Bandit</b>	2007-	CF06KD	black dim
<b>GSF 650 Bandit</b>	2007-	CF06S	silver
<b>DL650 V-Strom</b>	2004-2010	CF14KD	black dim
<b>DL650 V-Strom</b>	2011-	CF24KD	black dim
<b>XF650 Freewind</b>		CF33KD	black dim
<b>DR750 Big</b>		CF01W	white
<b>DR750 Big</b>		CF01KD	black dim
<b>DR800 Big</b>		CF31W	white
<b>DR800 Big</b>		CF31KD	black dim
<b>DL1000 V-Strom</b>	2002-2007	CF27KD	black dim
<b>DL1000 V-Strom</b>	2014-	CF52KD	black dim
<b>GSF 1200 Bandit / GSX 1200 Inazuma</b>		CF23KD	black dim
<b>GSF 1250 Bandit</b>	2007-	CF25KD	black dim
<b>GSF 1250 Bandit</b>	2007-	CF25S	silver
<b>Triumph</b>			
<b>Tiger 800</b>	2010-2014	CF73KD	black dim
<b>Tiger 1050</b>	2006-2012	CF59KD	black dim
<b>Tiger 800 XCX</b>	2015-	CF80KD	black dim
<b>Yamaha</b>			
<b>FZ-6</b>	2004-2012	CF76KD	black dim
<b>FZ-6</b>	2004-2012	CF76S	silver
<b>XT660Z Tenere</b>	2008-2015	CF60KD	black dim
<b>MT-07 / XSR 700</b>	2016-	CF79KD	black dim+slider SL01
<b>MT-07 / XSR 700</b>	2016-	CF79Y	yellow+slider SL01
<b>MT-07 / XSR 700</b>	2014-2015	CF58Y	yellow
<b>MT-07 / XSR 700</b>	2014-2015	CF58KD	black dim
<b>MT-07 Tracer</b>	2016-	CF72KD	black dim
<b>XTZ 750 Super Tenere</b>		CF26KD	black dim
<b>XTZ 750 Super Tenere</b>		CF26S	silver
<b>TDM 850 (type 3VD)</b>		CF37KD	black dim
<b>TDM 850</b>	1996-	CF32KD	black dim
<b>MT-09 / XSR 900</b>	2013-	CF71KD	black dim
<b>TDM 900</b>		CF35KD	black dim, upper frame
<b>BT 1100 Bulldog</b>		CF15S	silver
<b>BT 1100 Bulldog</b>		CF15KD	black dim
<b>XTZ 1200 Z Super Tenere</b>	2010-	CF49KD	black dim
<b>Yamaha XV1700 Warrior</b>	2003-	CF09KD	black dim





RDMOTO



EUROPEAN UNION  
European Regional Development Fund  
Operational Programme Enterprise  
and Innovations for Competitiveness



**CONTACT**



Lukavice 267 | 516 03 | Czechia



[info@rdmoto.eu](mailto:info@rdmoto.eu)



[www.rdmoto.eu](http://www.rdmoto.eu)